

Datasheet for ABIN7139061
anti-APLP2 antibody (pTyr755)[Go to Product page](#)

1 Image

Overview

Quantity:	100 µL
Target:	APLP2
Binding Specificity:	pTyr755
Reactivity:	Human
Host:	Rabbit
Clonality:	Polyclonal
Conjugate:	This APLP2 antibody is un-conjugated
Application:	Immunohistochemistry (IHC), ELISA

Product Details

Immunogen:	Peptide sequence around phosphorylation site of tyrosine 755 (P-T-Y(p)-K-Y) derived from Human APLP2.
Isotype:	IgG
Cross-Reactivity:	Human, Mouse, Rat
Purification:	Antibodies were produced by immunizing rabbits with synthetic phosphopeptide and KLH conjugates. Antibodies were purified by affinity-chromatography using epitope-specific phosphopeptide. Non-phospho specific antibodies were removed by chromatography using

Target Details

Target:	APLP2
Alternative Name:	APLP2 (APLP2 Products)

Target Details

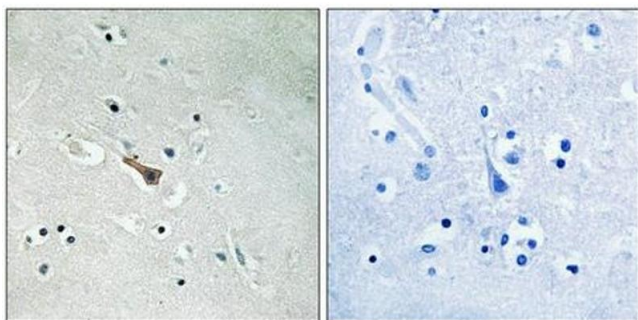
Background:	<p>Background:</p> <p>APLP2 May play a role in the regulation of hemostasis. The soluble form may have inhibitory properties towards coagulation factors. May interact with cellular G-protein signaling pathways. May bind to the DNA 5'-GTCACATG-3'(CDEI box).</p> <p>Sprecher C.A., Biochemistry 32:4481-4486(1993).</p> <p>Wasco W., Nat. Genet. 5:95-99(1993).</p> <p>von der Kammer H., DNA Cell Biol. 13:1137-1143(1994).</p> <p>Aliases: amyloid beta (A4) precursor like protein 2 antibody, Amyloid like protein 2 antibody, Amyloid precursor protein homolog HSD 2 antibody, amyloid precursor protein homolog HSD2 antibody, Amyloid protein homolog antibody, Amyloid-like protein 2 antibody, APLP-2 antibody, ApIp2 antibody, APLP2_HUMAN antibody, APPH antibody, APPL2 antibody, CDEBP antibody, CDEI box binding protein antibody, CDEI box-binding protein antibody</p>
UniProt:	Q06481
Pathways:	EGFR Signaling Pathway , Transition Metal Ion Homeostasis , Feeding Behaviour

Application Details

Application Notes:	IHC:1:50-1:100,
Restrictions:	For Research Use only

Handling

Format:	Liquid
Buffer:	Rabbit IgG in phosphate buffered saline (without Mg ²⁺ and Ca ²⁺), pH 7.4, 150 mM NaCl, 0.02 % sodium azide and 50 % glycerol.
Preservative:	Sodium azide
Precaution of Use:	This product contains Sodium azide: a POISONOUS AND HAZARDOUS SUBSTANCE which should be handled by trained staff only.
Storage:	-20 °C,-80 °C
Storage Comment:	Upon receipt, store at -20°C or -80°C. Avoid repeated freeze.



Immunohistochemistry

Image 1. Immunohistochemical analysis of paraffin-embedded human brain tissue using APLP2 (Phospho-Tyr755) antibody (left) or the same antibody preincubated with blocking peptide (right).