

Datasheet for ABIN7139065
anti-CBL antibody (pTyr770)

3 Images

[Go to Product page](#)

Overview

Quantity:	100 µL
Target:	CBL
Binding Specificity:	pTyr770
Reactivity:	Human
Host:	Rabbit
Clonality:	Polyclonal
Conjugate:	This CBL antibody is un-conjugated
Application:	Western Blotting (WB), ELISA, Immunohistochemistry (IHC), Immunofluorescence (IF)

Product Details

Immunogen:	Peptide sequence around phosphorylation site of tyrosine 770 (T-E-Y(p)-M-T) derived from Human c-Cbl.
Isotype:	IgG
Cross-Reactivity:	Human
Purification:	Antibodies were produced by immunizing rabbits with synthetic phosphopeptide and KLH conjugates. Antibodies were purified by affinity-chromatography using epitope-specific phosphopeptide. Non-phospho specific antibodies were removed by chromatography using

Target Details

Target:	CBL
Alternative Name:	CBL (CBL Products)

Target Details

Background: Background: Participates in signal transduction in hematopoietic cells. Adapter protein that functions as a negative regulator of many signaling pathways that start from receptors at the cell surface. Acts as an E3 ubiquitin-protein ligase, which accepts ubiquitin from specific E2 ubiquitin-conjugating enzymes, and then transfers it to substrates promoting their degradation by the proteasome. Recognizes activated receptor tyrosine kinases, including PDGFA, EGF and CSF1, and terminates signaling.

Blake, T.J. et al. (1991) Oncogene 6, 653-657.

Thien, C.B. and Langdon, W.Y. (1998) Immunol. Cell Biol. 76, 473-482.

Kamei, T. et al. (2000) Int. J. Oncol. 17, 335-339.

Hunter, C. et al. (1999) J. Biol. Chem. 274, 2097-2106.

Aliases: 4732447J05Rik antibody, C CBL antibody, Cas Br M (murine) ecotropic retroviral transforming sequence antibody, Casitas B lineage lymphoma proto oncogene antibody, Casitas B-lineage lymphoma proto-oncogene antibody, CBL 2 antibody, cbl antibody, CBL_HUMAN antibody, CBL2 antibody, E3 ubiquitin protein ligase CBL antibody, E3 ubiquitin-protein ligase CBL antibody, Oncogene CBL2 antibody, Proto oncogene c CBL antibody, Proto-oncogene c-CBL antibody, RGD1561386 antibody, RING finger protein 55 antibody, RNF55 antibody, Signal transduction protein CBL antibody

UniProt: [P22681](#)

Pathways: [TCR Signaling](#), [Interferon-gamma Pathway](#), [EGFR Signaling Pathway](#), [EGFR Downregulation](#), [VEGFR1 Specific Signals](#)

Application Details

Application Notes: WB:1:500-1:1000, IHC:1:50-1:100, IF:1:100-1:200,

Restrictions: For Research Use only

Handling

Format: Liquid

Buffer: Supplied at 1.0 mg/mL in phosphate buffered saline (without Mg²⁺ and Ca²⁺), pH 7.4, 150 mM NaCl, 0.02 % sodium azide and 50 % glycerol.

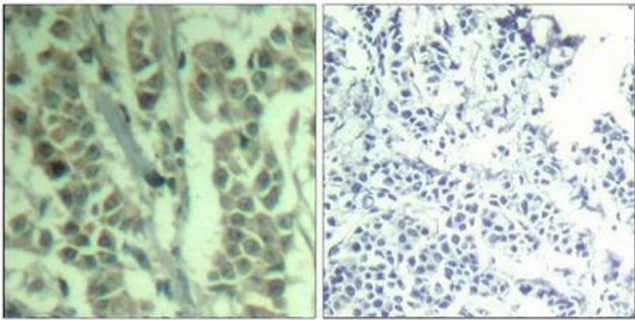
Preservative: Sodium azide

Precaution of Use: This product contains Sodium azide: a POISONOUS AND HAZARDOUS SUBSTANCE which should be handled by trained staff only.

Handling

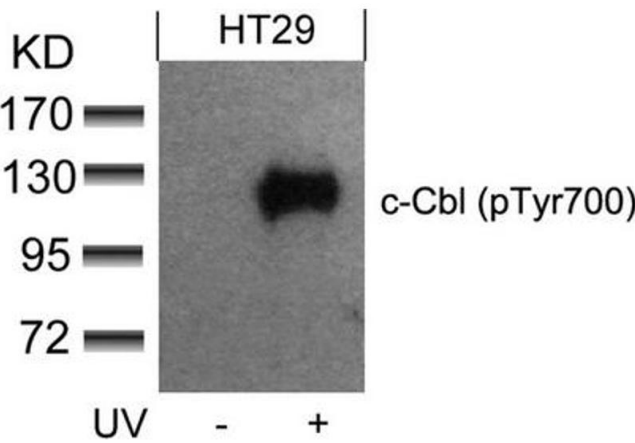
Storage:	-20 °C,-80 °C
Storage Comment:	Upon receipt, store at -20°C or -80°C. Avoid repeated freeze.

Images



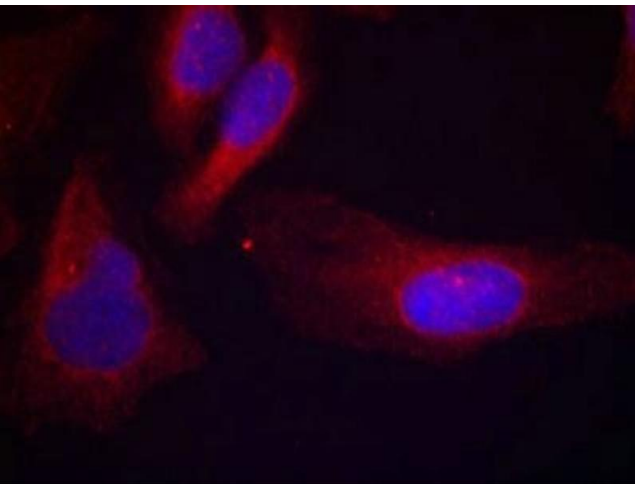
Immunohistochemistry

Image 1. Immunohistochemical analysis of paraffin-embedded human breast carcinoma tissue using c-Cbl(Phospho-Tyr700) Antibody(left) or the same antibody preincubated with blocking peptide(right).



Western Blotting

Image 2. Western blot analysis of extracts from HT29 cells untreated or treated with UV using c-Cbl(phospho-Tyr700) Antibody.



Immunofluorescence

Image 3. Immunofluorescence staining of methanol-fixed Hela cells using c-Cbl(phospho-Tyr700) Antibody.