

Datasheet for ABIN7139080
anti-EPS15 antibody (pTyr849)[Go to Product page](#)

1 Image

Overview

Quantity:	100 µL
Target:	EPS15
Binding Specificity:	pTyr849
Reactivity:	Human
Host:	Rabbit
Clonality:	Polyclonal
Conjugate:	This EPS15 antibody is un-conjugated
Application:	Western Blotting (WB), ELISA

Product Details

Immunogen:	Peptide sequence around phosphorylation site of tyrosine 849 (S-A-Y(p)-P-S) derived from Human Ephrin EPS15.
Isotype:	IgG
Cross-Reactivity:	Human, Mouse, Rat
Purification:	Antibodies were produced by immunizing rabbits with synthetic phosphopeptide and KLH conjugates. Antibodies were purified by affinity-chromatography using epitope-specific phosphopeptide. Non-phospho specific antibodies were removed by chromatography using

Target Details

Target:	EPS15
Alternative Name:	EPS15 (EPS15 Products)

Target Details

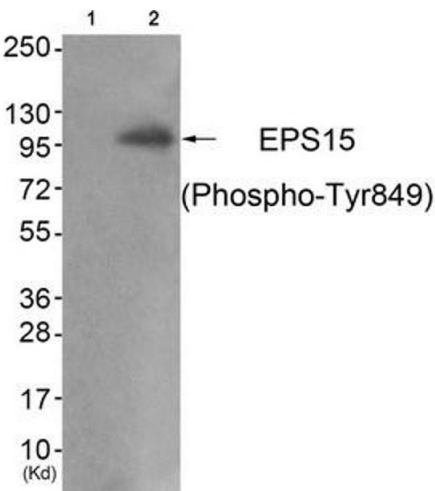
Background:	<p>Background:</p> <p>This gene encodes a protein that is part of the EGFR pathway. The protein is present at clatherin-coated pits and is involved in receptor-mediated endocytosis of EGF. Notably, this gene is rearranged with the HRX/ALL/MLL gene in acute myelogenous leukemias. Alternate transcriptional splice variants of this gene have been observed but have not been thoroughly characterized.</p> <p>Wong W.T., Oncogene 9:1591-1597(1994). Bernard O.A., Oncogene 9:1039-1045(1994).</p> <p>Aliases: EPS15 antibody, AF1PEpidermal growth factor receptor substrate 15 antibody, Protein Eps15 antibody, Protein AF-1p antibody</p>
UniProt:	P42566
Pathways:	EGFR Signaling Pathway , Regulation of Muscle Cell Differentiation , Skeletal Muscle Fiber Development , EGFR Downregulation

Application Details

Application Notes:	WB:1:500-1:1000,
Restrictions:	For Research Use only

Handling

Format:	Liquid
Buffer:	Rabbit IgG in phosphate buffered saline (without Mg ²⁺ and Ca ²⁺), pH 7.4, 150 mM NaCl, 0.02 % sodium azide and 50 % glycerol.
Preservative:	Sodium azide
Precaution of Use:	This product contains Sodium azide: a POISONOUS AND HAZARDOUS SUBSTANCE which should be handled by trained staff only.
Storage:	-20 °C,-80 °C
Storage Comment:	Upon receipt, store at -20°C or -80°C. Avoid repeated freeze.



Western Blotting

Image 1. Western blot analysis of extracts from JK cells (Lane 2), using EPS15 (Phospho-Tyr849) Antibody. The lane on the left is treated with antigen-specific peptide.