



[Go to Product page](#)

Datasheet for ABIN7139084

anti-Cofilin1/2 (CFL1/2) (pTyr88) antibody

2 Images

Overview

Quantity:	100 µL
Target:	Cofilin1/2 (CFL1/2)
Binding Specificity:	pTyr88
Reactivity:	Human
Host:	Rabbit
Clonality:	Polyclonal
Conjugate:	Un-conjugated
Application:	Immunohistochemistry (IHC), Western Blotting (WB), ELISA

Product Details

Immunogen:	Peptide sequence around phosphorylation site of tyrosine 88 (A-T-Y(p)-E-T) derived from Human cofilin1/cofilin2.
Isotype:	IgG
Cross-Reactivity:	Human, Mouse
Purification:	Antibodies were produced by immunizing rabbits with synthetic phosphopeptide and KLH conjugates. Antibodies were purified by affinity-chromatography using epitope-specific phosphopeptide. Non-phospho specific antibodies were removed by chromatography using

Target Details

Target:	Cofilin1/2 (CFL1/2)
Alternative Name:	CFL1/CFL2 (CFL1/2 Products)

Target Details

Background: Background: Controls reversibly actin polymerization and depolymerization in a pH -sensitive manner. It has the ability to bind G- and F-actin in a 1:1 ratio of cofilin to actin. It is the major component of intranuclear and cytoplasmic actin rods.

Carlier, M. et al. (1999) J. Biol. Chem. 274, 33827-33830.

Arber, S. et al. (1998) Nature 393, 805-809.

Yang, N. et al. (1998) Nature 393, 809-812.

Aliases: CFL1/CFL2

UniProt: [P23528](#), [Q9Y281](#)

Pathways: [Tube Formation](#), [CXCR4-mediated Signaling Events](#)

Application Details

Application Notes: WB:1:500-1:1000, IHC:1:50-1:100,

Restrictions: For Research Use only

Handling

Format: Liquid

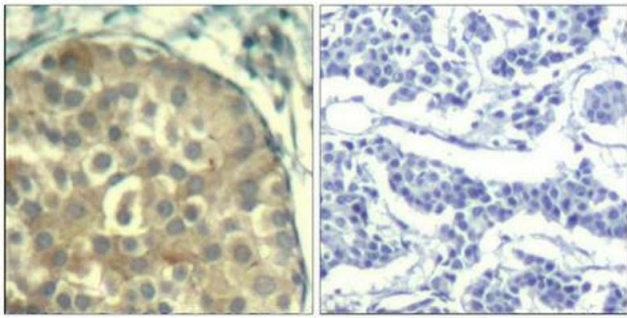
Buffer: Supplied at 1.0 mg/mL in phosphate buffered saline (without Mg²⁺ and Ca²⁺), pH 7.4, 150 mM NaCl, 0.02 % sodium azide and 50 % glycerol.

Preservative: Sodium azide

Precaution of Use: This product contains Sodium azide: a POISONOUS AND HAZARDOUS SUBSTANCE which should be handled by trained staff only.

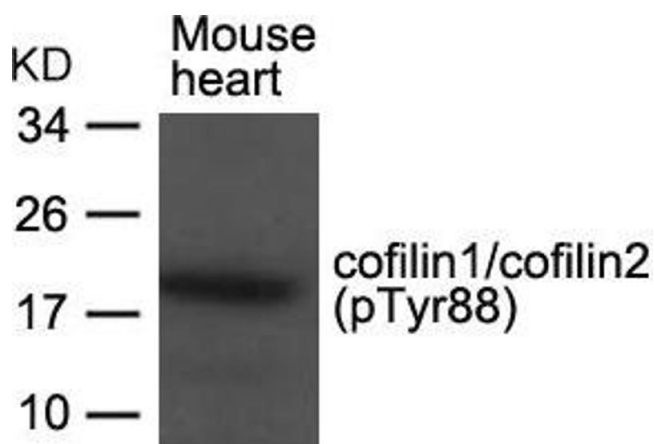
Storage: -20 °C,-80 °C

Storage Comment: Upon receipt, store at -20°C or -80°C. Avoid repeated freeze.



Immunohistochemistry

Image 1. Immunohistochemical analysis of paraffin-embedded human breast carcinoma tissue using cofilin1/cofilin2(Phospho-Tyr88) Antibody(left) or the same antibody preincubated with blocking peptide(right).



Western Blotting

Image 2. Western blot analysis of extracts from Mouse heart tissue using cofilin1/cofilin2(phospho-Tyr88) Antibody.