

Datasheet for ABIN7139085  
**anti-Paxillin antibody (pTyr88)**[Go to Product page](#)

## 2 Images

## Overview

Quantity:	100 µL
Target:	Paxillin (PXN)
Binding Specificity:	pTyr88
Reactivity:	Human
Host:	Rabbit
Clonality:	Polyclonal
Conjugate:	This Paxillin antibody is un-conjugated
Application:	Western Blotting (WB), ELISA, Immunofluorescence (IF)

## Product Details

Immunogen:	Peptide sequence around phosphorylation site of tyrosine 88 (P-V-Y(p)-G-S) derived from Human Paxillin.
Isotype:	IgG
Cross-Reactivity:	Human
Purification:	Antibodies were produced by immunizing rabbits with synthetic phosphopeptide and KLH conjugates. Antibodies were purified by affinity-chromatography using epitope-specific phosphopeptide. Non-phospho specific antibodies were removed by chromatography using

## Target Details

Target:	Paxillin (PXN)
Alternative Name:	PXN ( <a href="#">PXN Products</a> )

## Target Details

**Background:** Background: An antiphosphotyrosine antibody was used to identify proteins that are phosphorylated in Rous sarcoma virus-transformed chick embryo fibroblasts, and a 76-kD protein was obtained that localizes to focal adhesions at the ends of actin-containing stress fibers in nontransformed cells (Ref.1). This protein was purified from chicken gizzard smooth muscle, and was named Pxn (Paxillin) ('paxillus' means 'small stake' or 'peg' in Latin) as a protein tethered to the membrane at focal adhesions

Turner, C.E. (2000) J. Cell Sci. 113, 4139-4140

Burridge, K. et al. (1992) J. Cell Biol. 119, 893-903.

Bellis, S. L. et al. (1997) Biochem. J. 325, 375-381.

Aliases: FLJ16691 antibody, FLJ23042 antibody, Paired box protein Pax 1 antibody, PAX 1 antibody, PAX1 antibody, PAX1\_HUMAN antibody, Paxillin alpha antibody, Paxillin antibody, PXN antibody, PXN protein antibody

**UniProt:** [P49023](#)

**Pathways:** [MAPK Signaling](#), [EGFR Signaling Pathway](#), [Response to Growth Hormone Stimulus](#), [Cell-Cell Junction Organization](#), [Maintenance of Protein Location](#), [CXCR4-mediated Signaling Events](#), [Signaling Events mediated by VEGFR1 and VEGFR2](#), [Signaling of Hepatocyte Growth Factor Receptor](#), [VEGF Signaling](#)

## Application Details

**Application Notes:** WB:1:500-1:1000, IF:1:100-1:200,

**Restrictions:** For Research Use only

## Handling

**Format:** Liquid

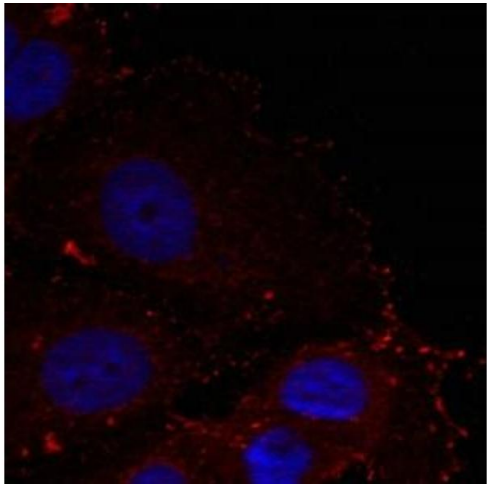
**Buffer:** Supplied at 1.0 mg/mL in phosphate buffered saline (without Mg<sup>2+</sup> and Ca<sup>2+</sup>), pH 7.4, 150 mM NaCl, 0.02 % sodium azide and 50 % glycerol.

**Preservative:** Sodium azide

**Precaution of Use:** This product contains Sodium azide: a POISONOUS AND HAZARDOUS SUBSTANCE which should be handled by trained staff only.

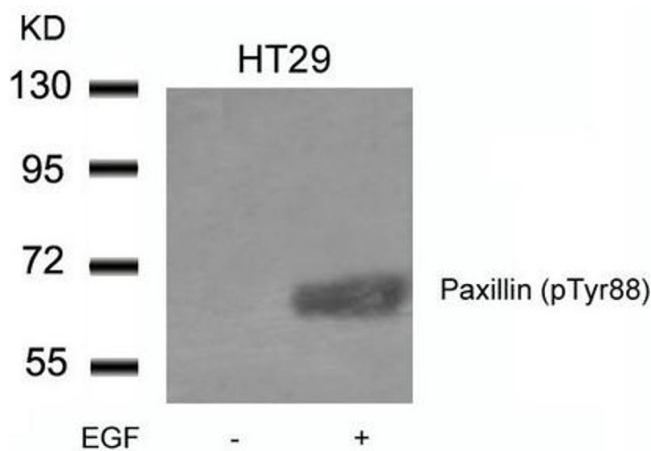
**Storage:** -20 °C,-80 °C

**Storage Comment:** Upon receipt, store at -20°C or -80°C. Avoid repeated freeze.



Immunofluorescence

**Image 1.** Immunofluorescence staining of methanol-fixed HeLa cells using Paxillin(phospho-Tyr88) Antibody.



Western Blotting

**Image 2.** Western blot analysis of extracts from HT29 cells untreated or treated with EGF using Paxillin(phospho-Tyr88) Antibody.