



[Go to Product page](#)

Datasheet for ABIN7139095
anti-ErbB2/Her2 antibody (pTyr1248)

4 Images

Overview

Quantity:	100 µL
Target:	ErbB2/Her2
Binding Specificity:	pTyr1248
Reactivity:	Human
Host:	Rabbit
Clonality:	Polyclonal
Conjugate:	This ErbB2/Her2 antibody is un-conjugated
Application:	Western Blotting (WB), ELISA, Immunohistochemistry (IHC), Immunofluorescence (IF)

Product Details

Immunogen:	Peptide sequence around phosphorylation site of tyrosine1248 (P-E-Y(p)-L-G) derived from Human HER2.
Isotype:	IgG
Cross-Reactivity:	Human, Mouse, Rat
Purification:	Antibodies were produced by immunizing rabbits with synthetic phosphopeptide and KLH conjugates. Antibodies were purified by affinity-chromatography using epitope-specific phosphopeptide. Non-phospho specific antibodies were removed by chromatography using

Target Details

Target:	ErbB2/Her2
Alternative Name:	ERBB2 (ErbB2/Her2 Products)

Target Details

Background:

Background:

Essential component of a neuregulin-receptor complex, although neuregulins do not interact with it alone. GP30 is a potential ligand for this receptor. Not activated by EGF, TGF- α and amphiregulin.

Yuan,Lu Qian ,Ming Shi, et al. (2008) HER2-dependent MMP-7 expression is mediated by activated STAT3 *Guogang Cellular Signalling*, 20:1284

Aliases: Verb b2 erythroblastic leukemia viral oncogene homolog 2, neuro/glioblastoma derived oncogene homolog antibody, C erb B2/neu protein antibody, CD340 antibody, CD340 antigen antibody, Cerb B2/neu protein antibody, CerbB2 antibody, Erb b2 receptor tyrosine kinase 2 antibody, ErbB-2 proto-oncogene antibody, ERBB2 antibody, ERBB2_HUMAN antibody, HER 2 antibody, HER 2/NEU antibody, HER2 antibody, Herstatin antibody, Human epidermal growth factor receptor 2 antibody, Metastatic lymph node gene 19 protein antibody, MLN 19 antibody, MLN19 antibody, NEU antibody, NEU proto oncogene antibody, Neuro/glioblastoma derived oncogene homolog antibody, Neuroblastoma/glioblastoma derived oncogene homolog antibody, NGL antibody, p185erbB2 antibody, Proto-oncogene c-ErbB-2 antibody, Proto-oncogene Neu antibody, Receptor tyrosine-protein kinase erbB-2 antibody, TKR1 antibody, Tyrosine kinase type cell surface receptor HER2 antibody, Tyrosine kinase-type cell surface receptor HER2 antibody, V erb b2 avian erythroblastic leukemia viral oncogene homolog 2 (neuro/glioblastoma derived oncogene homolog) antibody, V erb b2 avian erythroblastic leukemia viral oncogene homolog 2 antibody, V erb b2 avian erythroblastic leukemia viral oncoprotein 2 antibody, V erb b2 erythroblastic leukemia viral oncogene homolog 2, neuro/glioblastoma derived oncogene homolog (avian) antibody, V erb b2 erythroblastic leukemia viral oncogene homolog 2, neuro/glioblastoma derived oncogene homolog antibody, Verb b2 erythroblastic leukemia viral oncogene homolog 2, neuro/glioblastoma derived oncogene homolog (avian) antibody

UniProt:

[P04626](#)

Pathways:

[RTK Signaling](#), [Fc-epsilon Receptor Signaling Pathway](#), [EGFR Signaling Pathway](#), [Neurotrophin Signaling Pathway](#), [Skeletal Muscle Fiber Development](#)

Application Details

Application Notes:

WB:1:500-1:1000, IHC:1:50-1:100, IF:1:100-1:200,

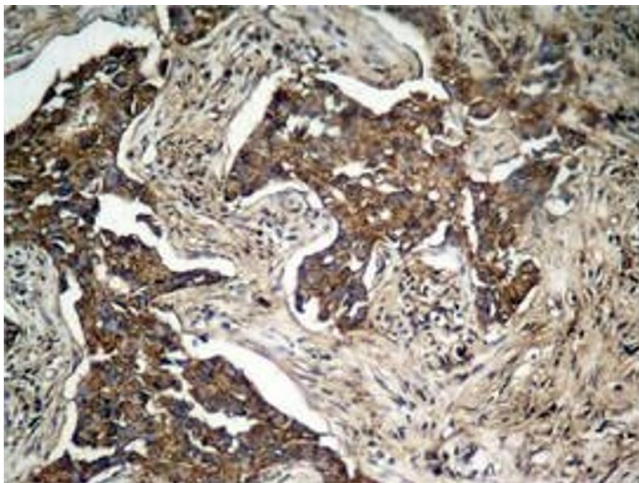
Restrictions:

For Research Use only

Handling

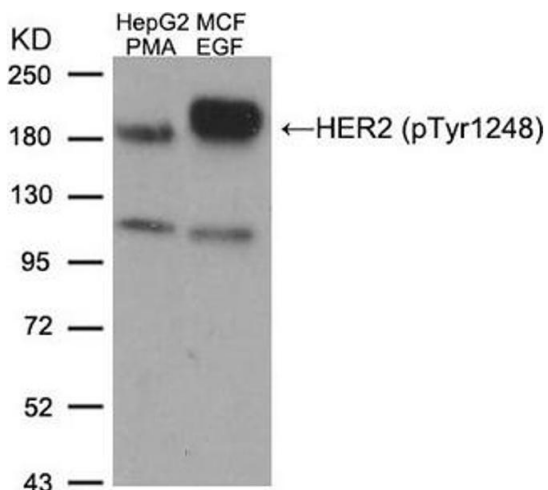
Format:	Liquid
Buffer:	Supplied at 1.0 mg/mL in phosphate buffered saline (without Mg ²⁺ and Ca ²⁺), pH 7.4, 150 mM NaCl, 0.02 % sodium azide and 50 % glycerol.
Preservative:	Sodium azide
Precaution of Use:	This product contains Sodium azide: a POISONOUS AND HAZARDOUS SUBSTANCE which should be handled by trained staff only.
Storage:	-20 °C,-80 °C
Storage Comment:	Upon receipt, store at -20°C or -80°C. Avoid repeated freeze.

Images



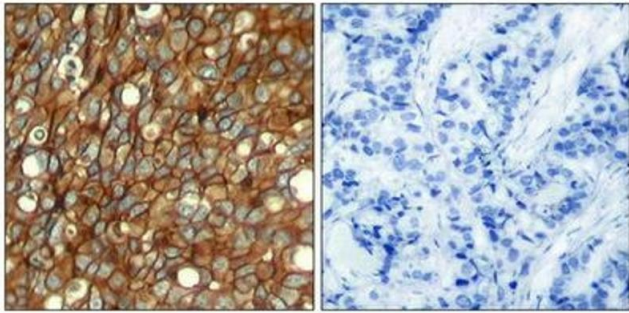
Immunohistochemistry

Image 1. Immunohistochemical analysis of paraffin-embedded human lung carcinoma tissue, using HER2 (Phospho-Tyr1248) Antibody.



Western Blotting

Image 2. Western blot analysis of extracts from HepG2 cells treated with PMA and MCF cells treated with EGF, using HER2 (Phospho-Tyr1248) Antibody.



Immunohistochemistry

Image 3. Immunohistochemical analysis of paraffin-embedded human breast carcinoma tissue using HER2 (Phospho-Tyr1248) Antibody (left) or the same antibody preincubated with blocking peptide (right).

Please check the [product details page](#) for more images. Overall 4 images are available for ABIN7139095.