



[Go to Product page](#)

Datasheet for ABIN7139098

anti-Integrin beta 4 antibody (pTyr1510)

1 Image

Overview

Quantity:	100 µL
Target:	Integrin beta 4 (ITGB4)
Binding Specificity:	pTyr1510
Reactivity:	Human
Host:	Rabbit
Clonality:	Polyclonal
Conjugate:	This Integrin beta 4 antibody is un-conjugated
Application:	Western Blotting (WB), Immunohistochemistry (IHC), ELISA

Product Details

Immunogen:	Peptide sequence around phosphorylation site of tyrosine1510(R-D-Y(p)-S-T) derived from Human ITGB4 .
Isotype:	IgG
Cross-Reactivity:	Human, Mouse, Rat
Purification:	Antibodies were produced by immunizing rabbits with synthetic phosphopeptide and KLH conjugates. Antibodies were purified by affinity-chromatography using epitope-specific phosphopeptide. Non-phospho specific antibodies were removed by chromatography using

Target Details

Target:	Integrin beta 4 (ITGB4)
Alternative Name:	ITGB4 (ITGB4 Products)

Target Details

Background:	<p>Background:</p> <p>Integrin alpha-6/beta-4 is a receptor for laminin. Plays a critical structural role in the hemidesmosome of epithelial cells. Is required for the regulation of keratinocyte polarity and motility.</p> <p>Suzuki S., EMBO J. 9:757-763(1990). Hogervorst F., EMBO J. 9:765-770(1990). Tamura R.N., J. Cell Biol. 111:1593-1604(1990).</p> <p>Aliases: CD 104 antibody, CD104 antibody, CD104 antigen antibody, gp150 antibody, Integrin beta 4 subunit antibody, Integrin beta-4 antibody, ITB4_HUMAN antibody, ITG B4 antibody, ITGB 4 antibody, Itgb4 antibody</p>
-------------	---

UniProt:	P16144
----------	------------------------

Pathways:	Integrin Complex
-----------	----------------------------------

Application Details

Application Notes:	WB:1:500-1:1000, IHC:1:50-1:100,
--------------------	----------------------------------

Restrictions:	For Research Use only
---------------	-----------------------

Handling

Format:	Liquid
---------	--------

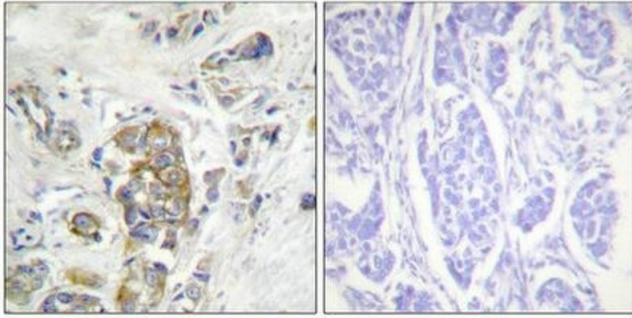
Buffer:	Rabbit IgG in phosphate buffered saline (without Mg ²⁺ and Ca ²⁺), pH 7.4, 150 mM NaCl, 0.02 % sodium azide and 50 % glycerol.
---------	---

Preservative:	Sodium azide
---------------	--------------

Precaution of Use:	This product contains Sodium azide: a POISONOUS AND HAZARDOUS SUBSTANCE which should be handled by trained staff only.
--------------------	--

Storage:	-20 °C,-80 °C
----------	---------------

Storage Comment:	Upon receipt, store at -20°C or -80°C. Avoid repeated freeze.
------------------	---



Immunohistochemistry

Image 1. Immunohistochemical analysis of paraffin-embedded human breast carcinoma tissue, using ITGB4 (Phospho-Tyr1510) antibody (left) or the same antibody preincubated with blocking peptide (right).