



[Go to Product page](#)

Datasheet for ABIN7139161

## anti-Histone H2B antibody (acLys15)

### 3 Images

#### Overview

|                      |   |
|----------------------|---|
| Quantity:            | 100 µL  |
| Target:              | Histone H2B   |
| Binding Specificity: | acLys15   |
| Reactivity:          | Human   |
| Host:                | Rabbit  |
| Clonality:           | Polyclonal  |
| Conjugate:           | This Histone H2B antibody is un-conjugated                                      |
| Application:         | Western Blotting (WB), ELISA, Immunofluorescence (IF), Immunoprecipitation (IP) |

#### Product Details

|                   |   |
|-------------------|---|
| Immunogen:        | Peptide sequence around site of Acetyl-Lys (15) derived from Human Histone H2B type 1-C/E/F/G/I |
| Isotype:          | IgG   |
| Cross-Reactivity: | Human   |
| Purification:     | Antigen Affinity Purified   |

#### Target Details

|                   |   |
|-------------------|---|
| Target:           | Histone H2B   |
| Alternative Name: | HIST1H2BC ( <a href="#">Histone H2B Products</a> )                              |
| Background:       | Background: Core component of nucleosome. Nucleosomes wrap and compact DNA into |

## Target Details

---

chromatin, limiting DNA accessibility to the cellular machineries which require DNA as a template. Histones thereby play a central role in transcription regulation, DNA repair, DNA replication and chromosomal stability. DNA accessibility is regulated via a complex set of post-translational modifications of histones, also called histone code, and nucleosome remodeling.

Aliases: H2BC4 antibody, H2BFL antibody, HIST1H2BC, antibody, H2BC6 antibody, H2BFH antibody, HIST1H2BE, antibody, H2BC7 antibody, H2BFG antibody, HIST1H2BF, antibody, H2BC8 antibody, H2BFA antibody, HIST1H2BG, antibody, H2BC10 antibody, H2BFK antibody, HIST1H2BIHistone H2B type 1-C/E/F/G/I antibody, Histone H2B.1 A antibody, Histone H2B.a antibody, H2B/a antibody, Histone H2B.g antibody, H2B/g antibody, Histone H2B.h antibody, H2B/h antibody, Histone H2B.k antibody, H2B/k antibody, Histone H2B.l antibody, H2B/l antibody

---

UniProt: [P62807](#)

## Application Details

---

Application Notes: Recommended dilution: WB:1:500-1:2000, IF:1:1-1:10, IP:1:200-1:2000,

Restrictions: For Research Use only

## Handling

---

Format: Liquid

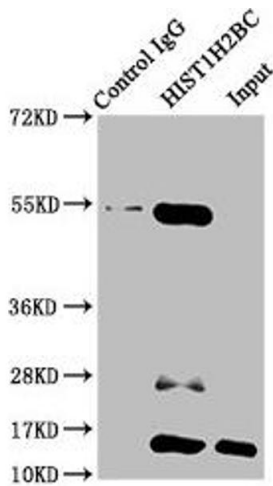
Buffer: Preservative: 0.03 % Proclin 300  
Constituents: 50 % Glycerol, 0.01M PBS, pH 7.4

Preservative: ProClin

Precaution of Use: This product contains ProClin: a POISONOUS AND HAZARDOUS SUBSTANCE which should be handled by trained staff only.

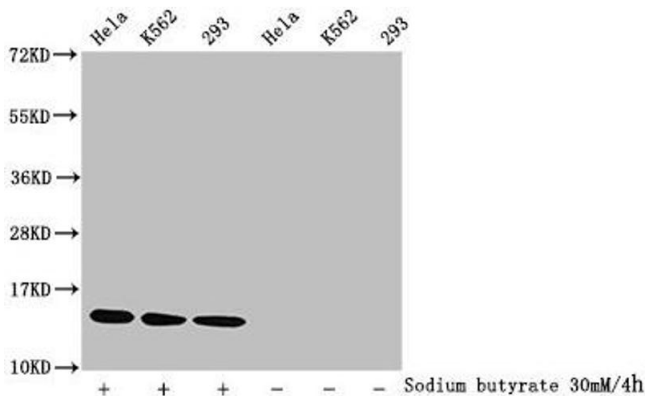
Storage: -20 °C,-80 °C

Storage Comment: Upon receipt, store at -20°C or -80°C. Avoid repeated freeze.



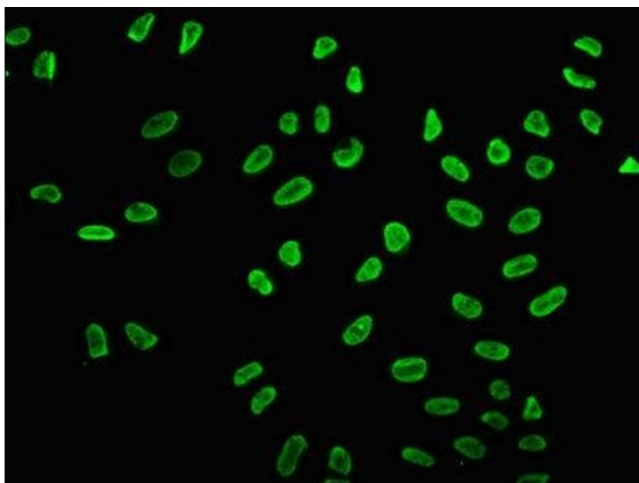
### Western Blotting

**Image 1.** Immunoprecipitating H1ST1H2BC in HepG2 whole cell lysate (treated with 30 mM sodium butyrate for 4h) Lane 1: Rabbit control IgG instead of ABIN7139161 in HepG2 whole cell lysate (treated with 30 mM sodium butyrate for 4h). For western blotting, a HRP-conjugated Protein G antibody was used as the secondary antibody (1/2000) Lane 2: ABIN7139161 (5 µg) + HepG2 whole cell lysate (treated with 30 mM sodium butyrate for 4h) (500 µg) Lane 3: HepG2 whole cell lysate (treated with 30 mM sodium butyrate for 4h) (20 µg)



### Western Blotting

**Image 2.** Western Blot Detected samples: HeLa whole cell lysate, K562 whole cell lysate, 293 whole cell lysate, Untreated (-) or treated (+) with 30 mM sodium butyrate for 4h All lanes: H1ST1H2BC antibody at 1:1000 Secondary Goat polyclonal to rabbit IgG at 1/40000 dilution Predicted band size: 14 kDa Observed band size: 14 kDa



### Immunofluorescence

**Image 3.** Immunofluorescence staining of HeLa cells (treated with 30mM sodium butyrate for 4h) with ABIN7139161 at 1:5, counter-stained with DAPI. The cells were fixed in 4% formaldehyde, permeabilized using 0.2% Triton X-100 and blocked in 10% normal Goat Serum. The cells were then incubated with the antibody overnight at 4°C. The secondary antibody was Alexa Fluor 488-conjugated AffiniPure Goat Anti-Rabbit IgG(H+L).