

Datasheet for ABIN7139399
anti-Histone H1.1 antibody

2 Images

[Go to Product page](#)

Overview

| | |
|--------------|--|
| Quantity: | 100 µL |
| Target: | Histone H1.1 (HIST1H1A) |
| Reactivity: | Human |
| Host: | Rabbit |
| Clonality: | Polyclonal |
| Conjugate: | This Histone H1.1 antibody is un-conjugated |
| Application: | ELISA, Immunofluorescence (IF), Chromatin Immunoprecipitation (ChIP) |

Product Details

| | |
|-------------------|--|
| Immunogen: | Peptide sequence around site of Lys (21) derived from Human Histone H1.1 |
| Isotype: | IgG |
| Cross-Reactivity: | Human |
| Purification: | Antigen Affinity Purified |

Target Details

| | |
|-------------------|---|
| Target: | Histone H1.1 (HIST1H1A) |
| Alternative Name: | HIST1H1A (HIST1H1A Products) |
| Background: | Background: Histone H1 protein binds to linker DNA between nucleosomes forming the macromolecular structure known as the chromatin fiber. Histones H1 are necessary for the condensation of nucleosome chains into higher-order structured fibers. Acts also as a regulator of individual gene transcription through chromatin remodeling, nucleosome spacing and DNA |

Target Details

methylation (By similarity).

Aliases: H1-1 antibody, H1F1 antibody, HIST1H1A antibody, Histone H1.1 antibody, Histone H1a antibody

UniProt: [Q02539](#)

Application Details

Application Notes: Recommended dilution: IF:1:50-1:200,

Restrictions: For Research Use only

Handling

Format: Liquid

Buffer: Preservative: 0.03 % Proclin 300
Constituents: 50 % Glycerol, 0.01M PBS, pH 7.4

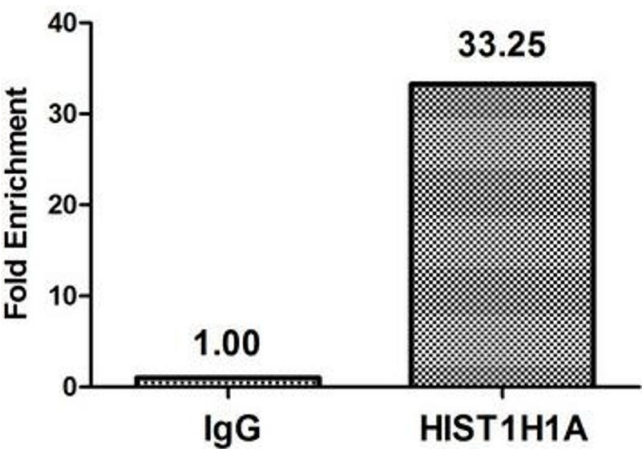
Preservative: ProClin

Precaution of Use: This product contains ProClin: a POISONOUS AND HAZARDOUS SUBSTANCE which should be handled by trained staff only.

Storage: -20 °C,-80 °C

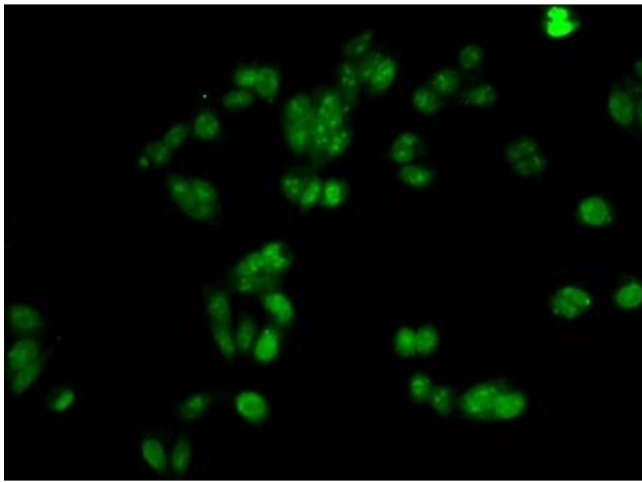
Storage Comment: Upon receipt, store at -20°C or -80°C. Avoid repeated freeze.

Images



Immunohistochemistry

Image 1. Chromatin Immunoprecipitation Hela (4×10^6) were treated with Micrococcal Nuclease, sonicated, and immunoprecipitated with 8 μ g anti-HIST1H1A (nacHU) or a control normal rabbit IgG. The resulting ChIP DNA was quantified using real-time PCR with primers against the β -Globin promoter.



Immunofluorescence

Image 2. Immunofluorescent analysis of HepG2 cells using nacHU at dilution of 1:100 and Alexa Fluor 488-conjugated AffiniPure Goat Anti-Rabbit IgG(H+L)