

Datasheet for ABIN7139414
anti-HIST1H1E antibody

5 Images

[Go to Product page](#)

Overview

Quantity:	100 µL
Target:	HIST1H1E
Reactivity:	Human
Host:	Rabbit
Clonality:	Polyclonal
Conjugate:	This HIST1H1E antibody is un-conjugated
Application:	ELISA, Immunohistochemistry (IHC), Western Blotting (WB), Immunofluorescence (IF), Chromatin Immunoprecipitation (ChIP)

Product Details

Immunogen:	Peptide sequence around site of Lys (25) derived from Human Histone H1.4
Isotype:	IgG
Cross-Reactivity:	Human
Purification:	Antigen Affinity Purified

Target Details

Target:	HIST1H1E
Alternative Name:	HIST1H1E (HIST1H1E Products)
Background:	Background: Histone H1 protein binds to linker DNA between nucleosomes forming the macromolecular structure known as the chromatin fiber. Histones H1 are necessary for the condensation of nucleosome chains into higher-order structured fibers. Acts also as a regulator

Target Details

of individual gene transcription through chromatin remodeling, nucleosome spacing and DNA methylation (By similarity).

Aliases: H1 histone family member 4 antibody, H1.4 antibody, H14_HUMAN antibody, H1E antibody, H1F4 antibody, Hist1h1e antibody, Histone 1 H1e antibody, Histone cluster 1 H1e antibody, Histone H1 antibody, Histone H1.4 antibody, Histone H1B antibody, MGC116819 antibody

UniProt: [P10412](#)

Application Details

Application Notes: Recommended dilution: WB:1:500-1:2000, IHC:1:20-1:200, IF:1:50-1:200,

Restrictions: For Research Use only

Handling

Format: Liquid

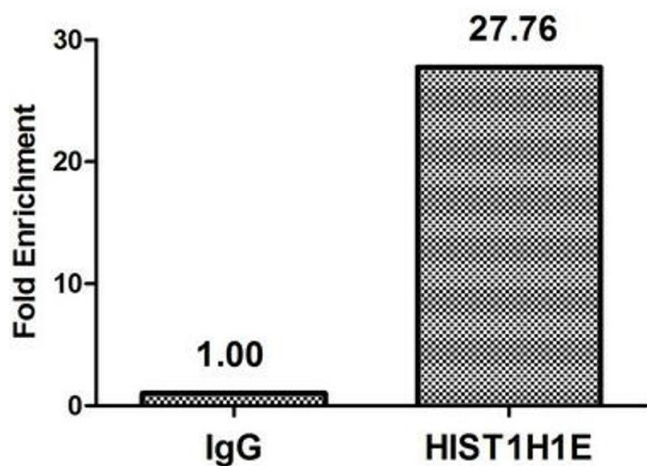
Buffer: Preservative: 0.03 % Proclin 300
Constituents: 50 % Glycerol, 0.01M PBS, pH 7.4

Preservative: ProClin

Precaution of Use: This product contains ProClin: a POISONOUS AND HAZARDOUS SUBSTANCE which should be handled by trained staff only.

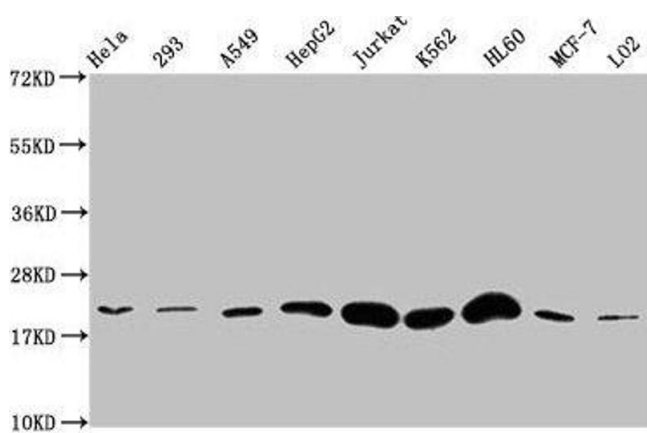
Storage: -20 °C,-80 °C

Storage Comment: Upon receipt, store at -20°C or -80°C. Avoid repeated freeze.



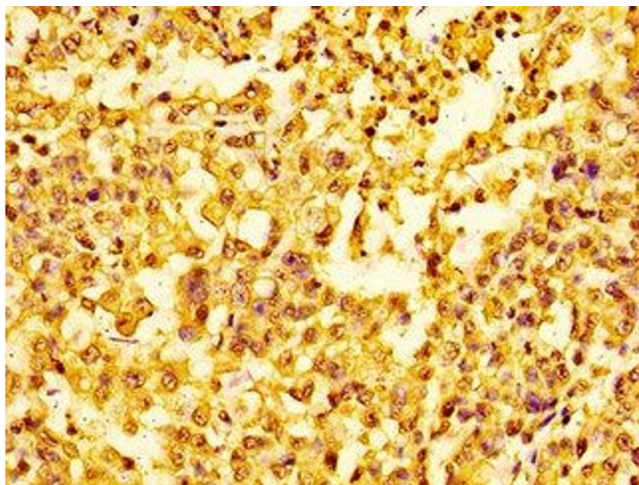
Immunohistochemistry

Image 1. Chromatin Immunoprecipitation Hela (4×10^6) were treated with Micrococcal Nuclease, sonicated, and immunoprecipitated with 8 μ g anti-HIST1H1E (nme1HU) or a control normal rabbit IgG. The resulting ChIP DNA was quantified using real-time PCR with primers against the β -Globin promoter.



Western Blotting

Image 2. Western Blot Positive WB detected in: Hela whole cell lysate, 293 whole cell lysate, A549 whole cell lysate, HepG2 whole cell lysate, Jurkat whole cell lysate, K562 whole cell lysate, HL60 whole cell lysate, MCF-7 whole cell lysate, LO2 whole cell lysate All lanes: HIST1H1E antibody at 1:500 Secondary Goat polyclonal to rabbit IgG at 1/40000 dilution Predicted band size: 22 kDa Observed band size: 22 kDa



Immunohistochemistry

Image 3. Immunohistochemistry of paraffin-embedded human colon cancer using nme1HU at dilution of 1:100

Please check the [product details page](#) for more images. Overall 5 images are available for ABIN7139414.