



[Go to Product page](#)

Datasheet for ABIN7139593

## anti-Histone H1.3 antibody (meLys16)

### 1 Image

#### Overview

Quantity:	100 µL
Target:	Histone H1.3 (HIST1H1D)
Binding Specificity:	meLys16
Reactivity:	Human
Host:	Rabbit
Clonality:	Polyclonal
Conjugate:	This Histone H1.3 antibody is un-conjugated
Application:	ELISA, Immunofluorescence (IF)

#### Product Details

Immunogen:	Peptide sequence around site of Mono-methyl-Lys (16) derived from Human Histone H1.3
Isotype:	IgG
Cross-Reactivity:	Human
Purification:	Antigen Affinity Purified

#### Target Details

Target:	Histone H1.3 (HIST1H1D)
Alternative Name:	HIST1H1D ( <a href="#">HIST1H1D Products</a> )
Background:	Background: Histone H1 protein binds to linker DNA between nucleosomes forming the macromolecular structure known as the chromatin fiber. Histones H1 are necessary for the

## Target Details

---

condensation of nucleosome chains into higher-order structured fibers. Acts also as a regulator of individual gene transcription through chromatin remodeling, nucleosome spacing and DNA methylation (By similarity).

Aliases: H1 histone family member 3 antibody, H1.3 antibody, H13\_HUMAN antibody, H1F3 antibody, HIST1 H1D antibody, HIST1H1D antibody, Histone 1 H1d antibody, Histone cluster 1 H1d antibody, Histone H1.3 antibody, Histone H1c antibody, MGC138176 antibody

---

UniProt: [P16402](#)

## Application Details

---

Application Notes: Recommended dilution: IF:1:50-1:200,

Restrictions: For Research Use only

## Handling

---

Format: Liquid

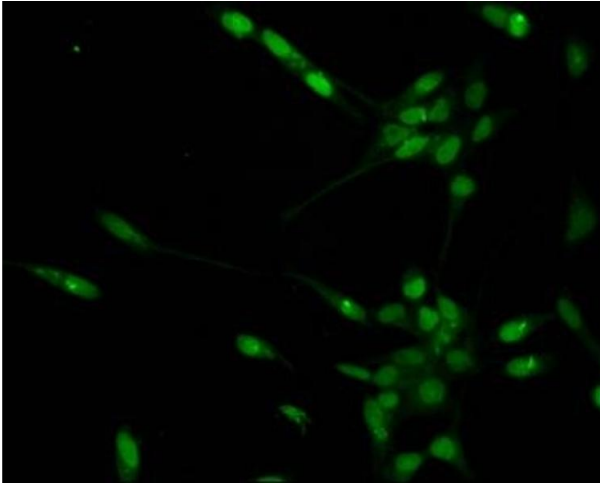
Buffer: Preservative: 0.03 % Proclin 300  
Constituents: 50 % Glycerol, 0.01M PBS, pH 7.4

Preservative: ProClin

Precaution of Use: This product contains ProClin: a POISONOUS AND HAZARDOUS SUBSTANCE which should be handled by trained staff only.

Storage: -20 °C,-80 °C

Storage Comment: Upon receipt, store at -20°C or -80°C. Avoid repeated freeze.



### Immunofluorescence

**Image 1.** Immunofluorescent analysis of HeLa cells using ABIN7139593 at dilution of 1:100 and Alexa Fluor 488-conjugated AffiniPure Goat Anti-Rabbit IgG(H+L)