

Datasheet for ABIN7139596
anti-HIST1H1E antibody (meLys25)[Go to Product page](#)

2 Images

Overview

Quantity:	100 µL
Target:	HIST1H1E
Binding Specificity:	meLys25
Reactivity:	Human
Host:	Rabbit
Clonality:	Polyclonal
Conjugate:	This HIST1H1E antibody is un-conjugated
Application:	ELISA, Immunofluorescence (IF), Immunocytochemistry (ICC)

Product Details

Immunogen:	Peptide sequence around site of Mono-methyl-Lys (25) derived from Human Histone H1.4
Isotype:	IgG
Cross-Reactivity:	Human
Purification:	Antigen Affinity Purified

Target Details

Target:	HIST1H1E
Alternative Name:	HIST1H1E (HIST1H1E Products)
Background:	Background: Histone H1 protein binds to linker DNA between nucleosomes forming the macromolecular structure known as the chromatin fiber. Histones H1 are necessary for the

Target Details

condensation of nucleosome chains into higher-order structured fibers. Acts also as a regulator of individual gene transcription through chromatin remodeling, nucleosome spacing and DNA methylation (By similarity).

Aliases: H1 histone family member 4 antibody, H1.4 antibody, H14_HUMAN antibody, H1E antibody, H1F4 antibody, Hist1h1e antibody, Histone 1 H1e antibody, Histone cluster 1 H1e antibody, Histone H1 antibody, Histone H1.4 antibody, Histone H1B antibody, MGC116819 antibody

UniProt: [P10412](#)

Application Details

Application Notes: Recommended dilution: ICC:1:1-1:10, IF:1:50-1:200,

Restrictions: For Research Use only

Handling

Format: Liquid

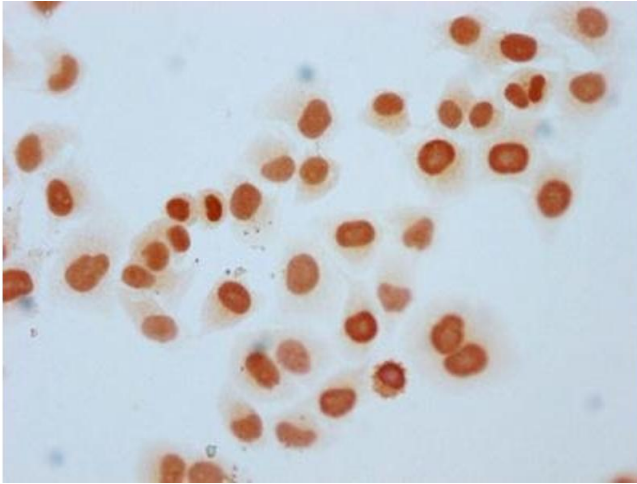
Buffer: Preservative: 0.03 % Proclin 300
Constituents: 50 % Glycerol, 0.01M PBS, pH 7.4

Preservative: ProClin

Precaution of Use: This product contains ProClin: a POISONOUS AND HAZARDOUS SUBSTANCE which should be handled by trained staff only.

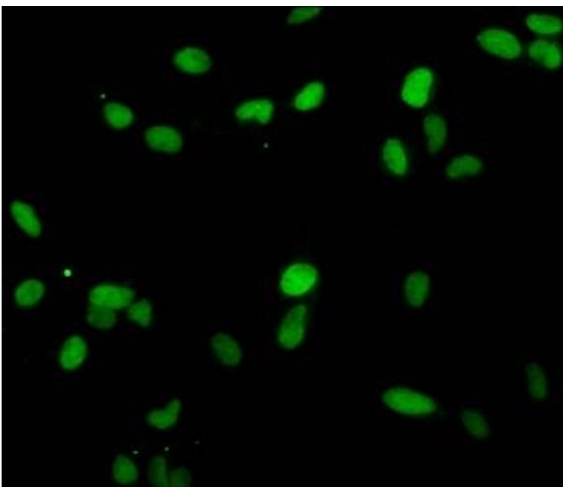
Storage: -20 °C,-80 °C

Storage Comment: Upon receipt, store at -20°C or -80°C. Avoid repeated freeze.



Immunocytochemistry

Image 1. Immunocytochemistry analysis of ABIN7139596 diluted at 1:5 and staining in HeLa cells performed on a Leica Bond™ system. The cells were fixed in 4% formaldehyde, permeabilized using 0.2% Triton X-100 and blocked with 10% normal goat serum 30min at RT. Then primary antibody (1% BSA) was incubated at 4°C overnight. The primary is detected by a biotinylated secondary antibody and visualized using an HRP conjugated SP system.



Immunofluorescence

Image 2. Immunofluorescent analysis of HeLa cells using ABIN7139596 at dilution of 1:100 and Alexa Fluor 488-conjugated AffiniPure Goat Anti-Rabbit IgG(H+L)