



[Go to Product page](#)

Datasheet for ABIN7139618

## anti-Histone H1.5 antibody (pSer188)

### 2 Images

#### Overview

Quantity:	100 µL
Target:	Histone H1.5 (HIST1H1B)
Binding Specificity:	pSer188
Reactivity:	Human
Host:	Rabbit
Clonality:	Polyclonal
Conjugate:	This Histone H1.5 antibody is un-conjugated
Application:	ELISA, Western Blotting (WB), Immunofluorescence (IF)

#### Product Details

Immunogen:	Peptide sequence around site of Phospho-Ser (188) derived from Human Histone H1.5
Isotype:	IgG
Cross-Reactivity:	Human, Rat
Purification:	Antigen Affinity Purified

#### Target Details

Target:	Histone H1.5 (HIST1H1B)
Alternative Name:	HIST1H1B ( <a href="#">HIST1H1B Products</a> )
Background:	Background: Histone H1 protein binds to linker DNA between nucleosomes forming the macromolecular structure known as the chromatin fiber. Histones H1 are necessary for the

## Target Details

---

condensation of nucleosome chains into higher-order structured fibers. Acts also as a regulator of individual gene transcription through chromatin remodeling, nucleosome spacing and DNA methylation (By similarity).

Aliases: H1 antibody, H1 histone family member 5 antibody, H1.5 antibody, H15 HUMAN antibody, H15\_HUMAN antibody, H1B antibody, H1F5 antibody, H1s 3 antibody, Hist1h1b antibody, Histone 1 H1b antibody, Histone cluster 1 H1b antibody, Histone H1.5 antibody, Histone H1a antibody, Histone H1b antibody, Histone H1s 3 antibody, MGC126630 antibody, MGC126632 antibody

---

UniProt: [P16401](#)

## Application Details

---

Application Notes: Recommended dilution: WB:1:100-1:1000, IF:1:50-1:200,

Restrictions: For Research Use only

## Handling

---

Format: Liquid

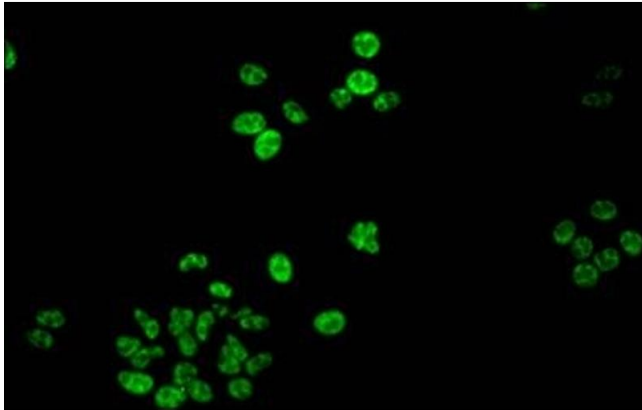
Buffer: Preservative: 0.03 % Proclin 300  
Constituents: 50 % Glycerol, 0.01M PBS, pH 7.4

Preservative: ProClin

Precaution of Use: This product contains ProClin: a POISONOUS AND HAZARDOUS SUBSTANCE which should be handled by trained staff only.

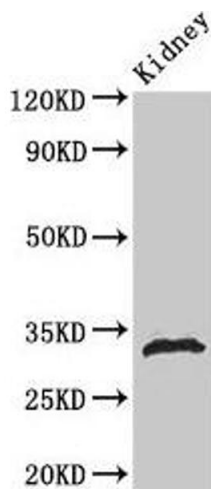
Storage: -20 °C,-80 °C

Storage Comment: Upon receipt, store at -20°C or -80°C. Avoid repeated freeze.



### Immunofluorescence

**Image 1.** Immunofluorescent analysis of HepG2 cells using ABIN7139618 at dilution of 1:100 and Alexa Fluor 488-conjugated AffiniPure Goat Anti-Rabbit IgG(H+L)



### Western Blotting

**Image 2.** Western Blot Positive WB detected in: Rat kidney tissue All lanes: HIST1H1B antibody at 1 µg/mL Secondary Goat polyclonal to rabbit IgG at 1/50000 dilution Predicted band size: 23 kDa Observed band size: 32 kDa