

Datasheet for ABIN7139650

anti-CENPA antibody**2** Images[Go to Product page](#)

Overview

Quantity:	100 µL
Target:	CENPA
Reactivity:	Human
Host:	Rabbit
Clonality:	Polyclonal
Conjugate:	This CENPA antibody is un-conjugated
Application:	ELISA, Immunohistochemistry (IHC)

Product Details

Immunogen:	Peptide sequence around site of Ser (7) derived from Human Histone H3-like centromeric protein A
Isotype:	IgG
Cross-Reactivity:	Human
Purification:	Antigen Affinity Purified

Target Details

Target:	CENPA
Alternative Name:	CENPA (CENPA Products)
Background:	Background: Histone H3-like nucleosomal protein that is specifically found in centromeric nucleosomes (PubMed:7962047, PubMed:9024683, PubMed:11756469, PubMed:14667408, PubMed:15702419, PubMed:15475964, PubMed:15282608, PubMed:17651496,

Target Details

PubMed:19114591, PubMed:27499292, PubMed:20739937). Replaces conventional H3 in the nucleosome core of centromeric chromatin at the inner plate of the kinetochore (PubMed:18072184). The presence of CENPA subtly modifies the nucleosome structure and the way DNA is wrapped around the nucleosome and gives rise to protruding DNA ends that are less well-ordered and rigid compared to nucleosomes containing histone H3 (PubMed:27499292, PubMed:26878239). May serve as an epigenetic mark that propagates centromere identity through replication and cell division (PubMed:15475964, PubMed:15282608, PubMed:26878239, PubMed:20739937, PubMed:21478274). Required for recruitment and assembly of kinetochore proteins, and as a consequence required for progress through mitosis, chromosome segregation and cytokinesis (PubMed:11756469, PubMed:14667408, PubMed:18072184, PubMed:23818633, PubMed:25556658, PubMed:27499292).

Aliases: CENP A antibody, CENP-A antibody, cenpa antibody, CENPA_HUMAN antibody, Centromere autoantigen A antibody, Centromere protein A 17 kDa antibody, Centromere protein A antibody, Histone H3 like centromeric protein A antibody, Histone H3-like centromeric protein A antibody

UniProt: [P49450](#)

Pathways: [Chromatin Binding](#), [Maintenance of Protein Location](#)

Application Details

Application Notes: Recommended dilution: IHC:1:10-1:100,

Restrictions: For Research Use only

Handling

Format: Liquid

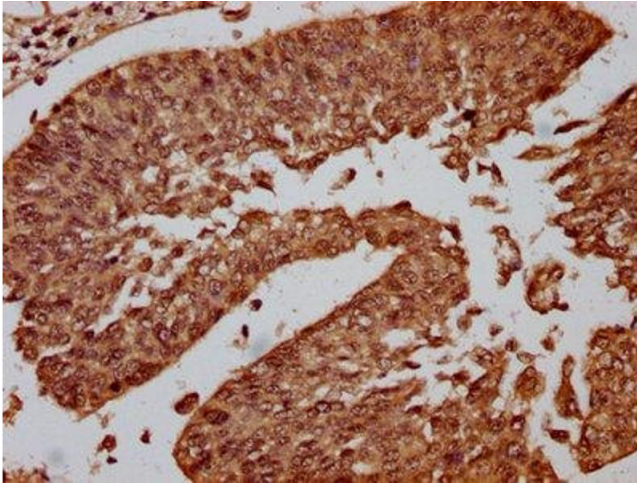
Buffer: Preservative: 0.03 % Proclin 300
Constituents: 50 % Glycerol, 0.01M PBS, pH 7.4

Preservative: ProClin

Precaution of Use: This product contains ProClin: a POISONOUS AND HAZARDOUS SUBSTANCE which should be handled by trained staff only.

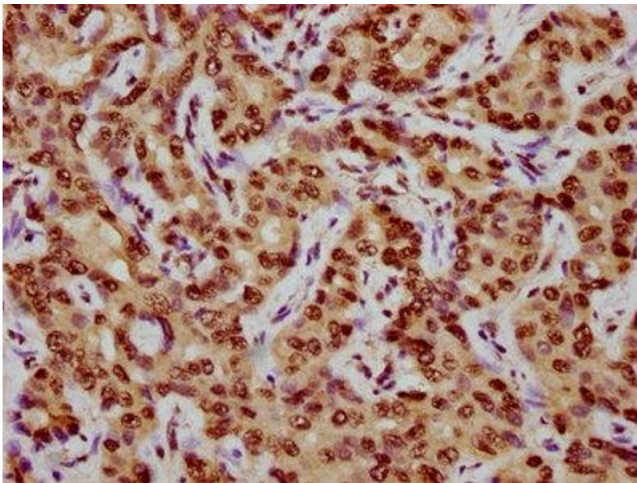
Storage: -20 °C,-80 °C

Storage Comment: Upon receipt, store at -20°C or -80°C. Avoid repeated freeze.



Immunohistochemistry

Image 1. IHC image of nphHU diluted at 1:10 and staining in paraffin-embedded human cervical cancer performed on a Leica Bond™ system. After dewaxing and hydration, antigen retrieval was mediated by high pressure in a citrate buffer (pH 6.0). Section was blocked with 10% normal goat serum 30min at RT. Then primary antibody (1% BSA) was incubated at 4°C overnight. The primary is detected by a biotinylated secondary antibody and visualized using an HRP conjugated SP system.



Immunohistochemistry

Image 2. IHC image of nphHU diluted at 1:10 and staining in paraffin-embedded human liver cancer performed on a Leica Bond™ system. After dewaxing and hydration, antigen retrieval was mediated by high pressure in a citrate buffer (pH 6.0). Section was blocked with 10% normal goat serum 30min at RT. Then primary antibody (1% BSA) was incubated at 4°C overnight. The primary is detected by a biotinylated secondary antibody and visualized using an HRP conjugated SP system.