



[Go to Product page](#)

Datasheet for ABIN7139680

## anti-CESA4 antibody (Catalytic Subunit 4)

### 1 Image

#### Overview

Quantity:	100 µL
Target:	CESA4
Binding Specificity:	AA 924-937, Catalytic Subunit 4
Reactivity:	Arabidopsis thaliana
Host:	Rabbit
Clonality:	Polyclonal
Conjugate:	This CESA4 antibody is un-conjugated
Application:	ELISA, Western Blotting (WB)

#### Product Details

Immunogen:	Peptide sequence from Arabidopsis thaliana Cellulose synthase A catalytic subunit 4 [UDP-forming] protein (924-937AA)
Isotype:	IgG
Cross-Reactivity:	Arabidopsis thaliana
Purification:	Antigen Affinity Purified

#### Target Details

Target:	CESA4
Alternative Name:	CESA4 ( <a href="#">CESA4 Products</a> )
Background:	Background: Catalytic subunit of cellulose synthase terminal complexes ('rosettes'), required

## Target Details

for beta-1, 4-glucan microfibril crystallization, a major mechanism of the cell wall formation. Involved in the secondary cell wall formation. Required for the xylem cell wall thickening. Aliases: CESA4 antibody, IRX5 antibody, At5g44030 antibody, MRH10.14Cellulose synthase A catalytic subunit 4 [UDP-forming] antibody, AtCesA4 antibody, EC 2.4.1.12 antibody, Protein IRREGULAR XYLEM 5 antibody, AtIRX5 antibody

UniProt: [Q84JA6](#)

## Application Details

Application Notes: Recommended dilution: WB:1:100-1:1000,

Restrictions: For Research Use only

## Handling

Format: Liquid

Buffer: Preservative: 0.03 % Proclin 300  
Constituents: 50 % Glycerol, 0.01M PBS, pH 7.4

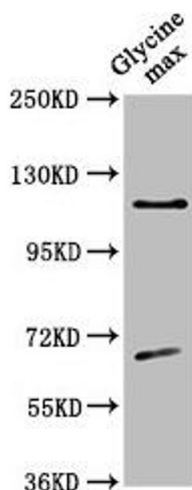
Preservative: ProClin

Precaution of Use: This product contains ProClin: a POISONOUS AND HAZARDOUS SUBSTANCE which should be handled by trained staff only.

Storage: -20 °C,-80 °C

Storage Comment: Upon receipt, store at -20°C or -80°C. Avoid repeated freeze.

## Images



### Western Blotting

**Image 1.** Western Blot Positive WB detected in: Glycine max leaf tissue All lanes: CESA4 antibody at 1:500 Secondary Goat polyclonal to rabbit IgG at 1/50000 dilution Predicted band size: 120 kDa Observed band size: 120 kDa