

Datasheet for ABIN7139700

**anti-PSMD14 antibody (Regulatory Subunit 14)**[Go to Product page](#)**4** Images

## Overview

Quantity:	100 µL
Target:	PSMD14
Binding Specificity:	AA 264-283, Regulatory Subunit 14
Reactivity:	Human
Host:	Rabbit
Clonality:	Polyclonal
Conjugate:	This PSMD14 antibody is un-conjugated
Application:	Western Blotting (WB), ELISA, Immunohistochemistry (IHC), Immunofluorescence (IF)

## Product Details

Immunogen:	Peptide sequence from Human 26S proteasome non-ATPase regulatory subunit 14 protein (264-283AA)
Isotype:	IgG
Cross-Reactivity:	Human, Rat
Purification:	Antigen Affinity Purified

## Target Details

Target:	PSMD14
Alternative Name:	PSMD14 ( <a href="#">PSMD14 Products</a> )
Background:	Background: Component of the 26S proteasome, a multiprotein complex involved in the ATP-

Target Details

dependent degradation of ubiquitinated proteins. This complex plays a key role in the maintenance of protein homeostasis by removing misfolded or damaged proteins, which could impair cellular functions, and by removing proteins whose functions are no longer required. Therefore, the proteasome participates in numerous cellular processes, including cell cycle progression, apoptosis, or DNA damage repair. The PSMD14 subunit is a metalloprotease that specifically cleaves \\Lys-63\\-linked polyubiquitin chains within the complex. Plays a role in response to double-strand breaks (DSBs): acts as a regulator of non-homologous end joining (NHEJ) by cleaving \\Lys-63\\-linked polyubiquitin, thereby promoting retention of JMJD2A/KDM4A on chromatin and restricting TP53BP1 accumulation. Also involved in homologous recombination repair by promoting RAD51 loading.

Aliases: 26S proteasome non-ATPase regulatory subunit 14 antibody, 26S proteasome regulatory subunit rpn11 antibody, 26S proteasome-associated PAD1 homolog 1 antibody, 26S proteasome-associated PAD1 homolog antibody, PAD1 antibody, PAD1, yeast, homolog of antibody, POH1 antibody, Proteasome (prosome, macropain) 26S subunit, non-ATPase, 14 antibody, Proteasome 26S subunit non ATPase 14 antibody, PSDE\_HUMAN antibody, Psmd14 antibody, RPN11 antibody, Testis tissue sperm binding protein Li 69n antibody

UniProt:	<a href="#">O00487</a>
Pathways:	<a href="#">Mitotic G1-G1/S Phases</a> , <a href="#">DNA Replication</a> , <a href="#">M Phase</a> , <a href="#">Positive Regulation of Endopeptidase Activity</a> , <a href="#">Synthesis of DNA</a> , <a href="#">Ubiquitin Proteasome Pathway</a>

Application Details

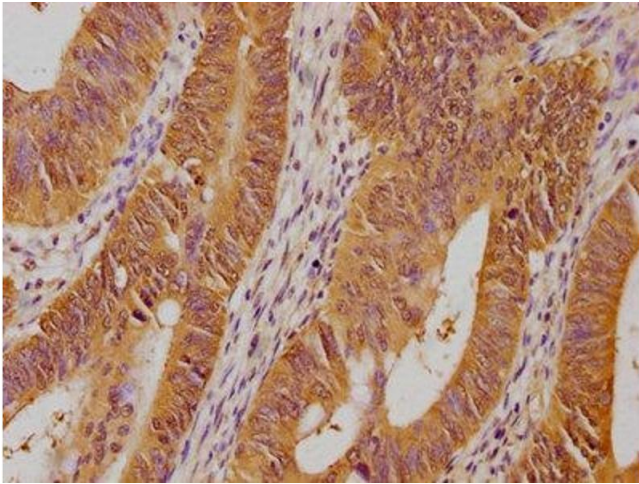
Application Notes:	Recommended dilution: WB:1:1000-1:5000, IHC:1:20-1:200, IF:1:50-1:200,
Restrictions:	For Research Use only

Handling

Format:	Liquid
Buffer:	Preservative: 0.03 % Proclin 300 Constituents: 50 % Glycerol, 0.01M PBS, pH 7.4
Preservative:	ProClin
Precaution of Use:	This product contains ProClin: a POISONOUS AND HAZARDOUS SUBSTANCE which should be handled by trained staff only.
Storage:	-20 °C,-80 °C

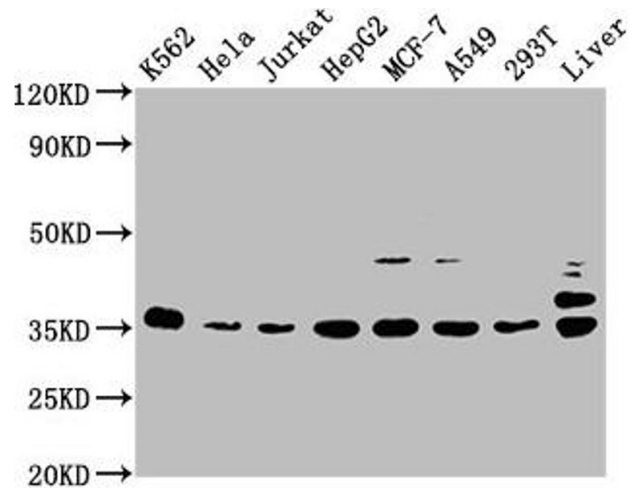
Storage Comment: Upon receipt, store at -20°C or -80°C. Avoid repeated freeze.

Images



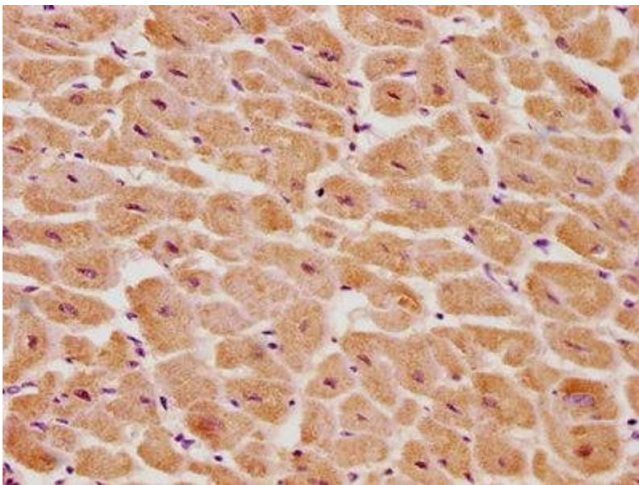
Immunohistochemistry

**Image 1.** IHC image of ABIN7139700 diluted at 1:100 and staining in paraffin-embedded human colon cancer performed on a Leica Bond™ system. After dewaxing and hydration, antigen retrieval was mediated by high pressure in a citrate buffer (pH 6.0). Section was blocked with 10% normal goat serum 30min at RT. Then primary antibody (1% BSA) was incubated at 4°C overnight. The primary is detected by a biotinylated secondary antibody and visualized using an HRP conjugated SP system.



Western Blotting

**Image 2.** Western Blot Positive WB detected in: K562 whole cell lysate, HeLa whole cell lysate, Jurkat whole cell lysate, HepG2 whole cell lysate, MCF-7 whole cell lysate, A549 whole cell lysate, 293T whole cell lysate, Rat liver tissue All lanes: PSMD14 antibody at 1:2000 Secondary Goat polyclonal to rabbit IgG at 1/50000 dilution Predicted band size: 35 kDa Observed band size: 35 kDa



Immunohistochemistry

**Image 3.** IHC image of ABIN7139700 diluted at 1:100 and staining in paraffin-embedded human heart tissue performed on a Leica Bond™ system. After dewaxing and hydration, antigen retrieval was mediated by high pressure in a citrate buffer (pH 6.0). Section was blocked with 10% normal goat serum 30min at RT. Then primary antibody (1% BSA) was incubated at 4°C overnight. The primary is detected by a biotinylated secondary antibody and visualized using an HRP conjugated SP system.

## Images

---

Please check the [product details page](#) for more images. Overall 4 images are available for ABIN7139700.