

Datasheet for ABIN7139704

anti-PSMD6 antibody (Regulatory Subunit 6)**3** Images[Go to Product page](#)

Overview

Quantity:	100 µL
Target:	PSMD6
Binding Specificity:	AA 355-372, Regulatory Subunit 6
Reactivity:	Human
Host:	Rabbit
Clonality:	Polyclonal
Conjugate:	This PSMD6 antibody is un-conjugated
Application:	Western Blotting (WB), ELISA, Immunohistochemistry (IHC), Immunofluorescence (IF)

Product Details

Immunogen:	Peptide sequence from Human 26S proteasome non-ATPase regulatory subunit 6 protein (355-372AA)
Isotype:	IgG
Cross-Reactivity:	Human
Purification:	Antigen Affinity Purified

Target Details

Target:	PSMD6
Alternative Name:	PSMD6 (PSMD6 Products)
Background:	Background: Component of the 26S proteasome, a multiprotein complex involved in the ATP-

Target Details

dependent degradation of ubiquitinated proteins. This complex plays a key role in the maintenance of protein homeostasis by removing misfolded or damaged proteins, which could impair cellular functions, and by removing proteins whose functions are no longer required. Therefore, the proteasome participates in numerous cellular processes, including cell cycle progression, apoptosis, or DNA damage repair.

Aliases: 26S proteasome non-ATPase regulatory subunit 6 antibody, 26S proteasome regulatory subunit RPN7 antibody, 26S proteasome regulatory subunit S10 antibody, Breast cancer-associated protein SGA-113M antibody, KIAA0107 antibody, p42A antibody, P44S10 antibody, PFAAP4 antibody, Phosphonoformate immuno-associated protein 4 antibody, Proteasome (prosome, macropain) 26S subunit, non-ATPase, 6 antibody, Proteasome regulatory particle subunit p44S10 antibody, PSMD6 antibody, PSMD6_HUMAN antibody, Rpn7 antibody, S10 antibody, SGA-113M antibody

UniProt: [Q15008](#)

Pathways: [Mitotic G1-G1/S Phases](#), [DNA Replication](#), [Synthesis of DNA](#), [Ubiquitin Proteasome Pathway](#)

Application Details

Application Notes: Recommended dilution: WB:1:1000-1:5000, IHC:1:20-1:200, IF:1:50-1:200,

Restrictions: For Research Use only

Handling

Format: Liquid

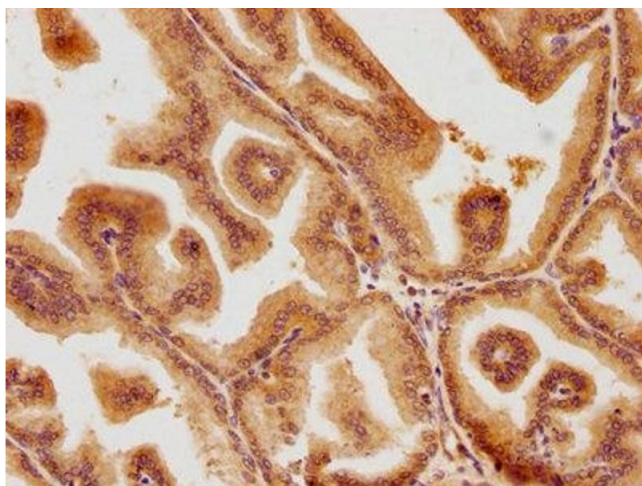
Buffer: Preservative: 0.03 % Proclin 300
Constituents: 50 % Glycerol, 0.01M PBS, pH 7.4

Preservative: ProClin

Precaution of Use: This product contains ProClin: a POISONOUS AND HAZARDOUS SUBSTANCE which should be handled by trained staff only.

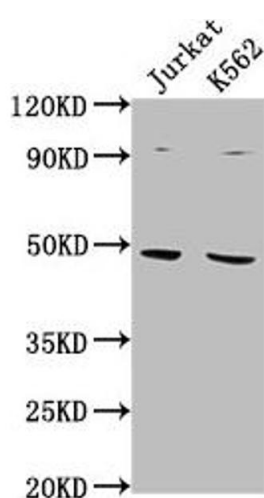
Storage: -20 °C, -80 °C

Storage Comment: Upon receipt, store at -20°C or -80°C. Avoid repeated freeze.



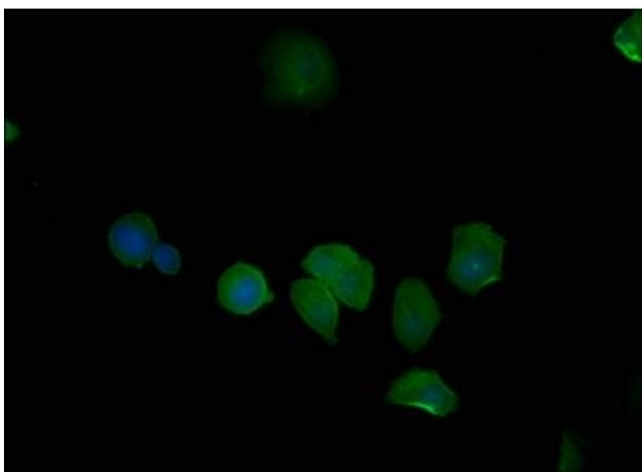
Immunohistochemistry

Image 1. IHC image of ABIN7139704 diluted at 1:100 and staining in paraffin-embedded human prostate tissue performed on a Leica Bond™ system. After dewaxing and hydration, antigen retrieval was mediated by high pressure in a citrate buffer (pH 6.0). Section was blocked with 10 % normal goat serum 30 min at RT. Then primary antibody (1 % BSA) was incubated at 4 °C overnight. The primary is detected by a biotinylated secondary antibody and visualized using an HRP conjugated SP system.



Western Blotting

Image 2. Western Blot Positive WB detected in: Jurkat whole cell lysate, K562 whole cell lysate All lanes: PSMD6 antibody at 1:2000 Secondary Goat polyclonal to rabbit IgG at 1/50000 dilution Predicted band size: 46, 42, 52 kDa Observed band size: 46 kDa



Immunofluorescence

Image 3. Immunofluorescence staining of MCF-7 cells with ABIN7139704 at 1:50, counter-stained with DAPI. The cells were fixed in 4 % formaldehyde, permeabilized using 0.2 % Triton X-100 and blocked in 10 % normal Goat Serum. The cells were then incubated with the antibody overnight at 4 °C. The secondary antibody was Alexa Fluor 488-conjugated AffiniPure Goat Anti-Rabbit IgG(H+L).