

Datasheet for ABIN7139711
anti-ENHO antibody (AA 37-54)[Go to Product page](#)

1 Image

Overview

Quantity:	100 µL
Target:	ENHO
Binding Specificity:	AA 37-54
Reactivity:	Human
Host:	Rabbit
Clonality:	Polyclonal
Conjugate:	This ENHO antibody is un-conjugated
Application:	Immunohistochemistry (IHC), ELISA

Product Details

Immunogen:	Peptide sequence from Human Adropin protein (37-54AA)
Isotype:	IgG
Cross-Reactivity:	Human
Purification:	>95%, Protein G purified

Target Details

Target:	ENHO
Alternative Name:	ENHO (ENHO Products)
Background:	Background: Involved in the regulation of glucose homeostasis and lipid metabolism. Aliases: Adropin antibody, C9orf165 antibody, Energy homeostasis associated protein antibody,

Target Details

Energy homeostasis-associated protein antibody, ENHO antibody, ENHO_HUMAN antibody, PRO830 antibody, UNQ470 antibody

UniProt: [Q6UWT2](#)

Application Details

Application Notes: Recommended dilution: IHC:1:200-1:500,

Restrictions: For Research Use only

Handling

Format: Liquid

Buffer: Preservative: 0.03 % Proclin 300
Constituents: 50 % Glycerol, 0.01M PBS, pH 7.4

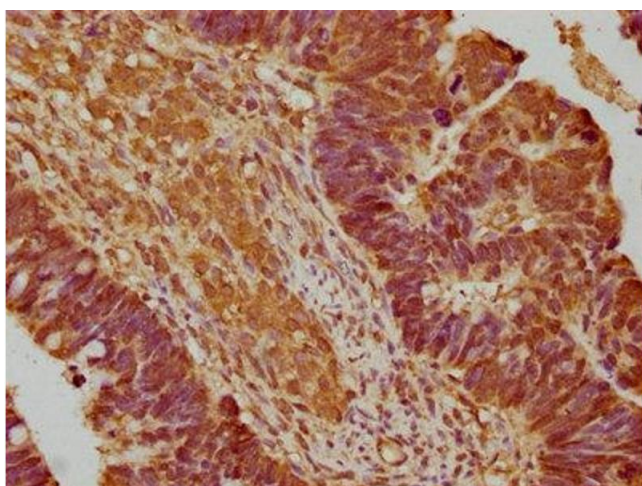
Preservative: ProClin

Precaution of Use: This product contains ProClin: a POISONOUS AND HAZARDOUS SUBSTANCE which should be handled by trained staff only.

Storage: -20 °C,-80 °C

Storage Comment: Upon receipt, store at -20°C or -80°C. Avoid repeated freeze.

Images



Immunohistochemistry

Image 1. IHC image of ABIN7139711 diluted at 1:200 and staining in paraffin-embedded human ovarian cancer performed on a Leica Bond™ system. After dewaxing and hydration, antigen retrieval was mediated by high pressure in a citrate buffer (pH 6.0). Section was blocked with 10 % normal goat serum 30 min at RT. Then primary antibody (1 % BSA) was incubated at 4 °C overnight. The primary is detected by a biotinylated secondary antibody and visualized using an HRP conjugated SP system.