

Datasheet for ABIN7139715

anti-alpha 1 Adrenergic Receptor antibody (AA 6-22)[Go to Product page](#)**2** Images

Overview

Quantity:	100 µL
Target:	alpha 1 Adrenergic Receptor (ADRA1A)
Binding Specificity:	AA 6-22
Reactivity:	Human
Host:	Rabbit
Clonality:	Polyclonal
Conjugate:	This alpha 1 Adrenergic Receptor antibody is un-conjugated
Application:	Western Blotting (WB), ELISA, Immunofluorescence (IF)

Product Details

Immunogen:	Peptide sequence from Human Alpha-1A adrenergic receptor protein (6-22AA)
Isotype:	IgG
Cross-Reactivity:	Human
Purification:	Antigen Affinity Purified

Target Details

Target:	alpha 1 Adrenergic Receptor (ADRA1A)
Alternative Name:	ADRA1A (ADRA1A Products)
Background:	Background: This alpha-adrenergic receptor mediates its action by association with G proteins that activate a phosphatidylinositol-calcium second messenger system. Its effect is mediated

Target Details

by G(q) and G(11) proteins. Nuclear ADRA1A-ADRA1B heterooligomers regulate phenylephrine(PE)-stimulated ERK signaling in cardiac myocytes.

Aliases: ADA1A_HUMAN antibody, ADRA1A antibody, Adra1c antibody, ADRA1L1 antibody, Adrenergic alpha1A receptor antibody, Adrenergic alpha1C receptor antibody, Adrenergic receptor alpha 1a antibody, Adrenergic receptor alpha 1c antibody, Adrenergic, alpha 1A , receptor variant 1 antibody, Adrenergic, alpha 1A , receptor variant 11 antibody, Adrenergic, alpha 1A , receptor variant 3 antibody, Adrenergic, alpha 1A , receptor variant 5 antibody, Adrenergic, alpha 1A , receptor variant 8 antibody, Adrenoceptor alpha 1A antibody, Alpha 1A adrenoreceptor antibody, Alpha 1C adrenergic receptor antibody, Alpha adrenergic receptor 1c antibody, Alpha-1A adrenergic receptor antibody, Alpha-1A adrenoceptor antibody, Alpha-1A adrenoreceptor antibody, Alpha-1C adrenergic receptor antibody, Alpha-adrenergic receptor 1c antibody, Alpha1A adrenergic receptor antibody, ALPHA1AAR antibody, G protein coupled receptor antibody

UniProt: [P35348](#)

Pathways: [AMPK Signaling](#)

Application Details

Application Notes: Recommended dilution: WB:1:1000-1:5000, IF:1:50-1:200,

Restrictions: For Research Use only

Handling

Format: Liquid

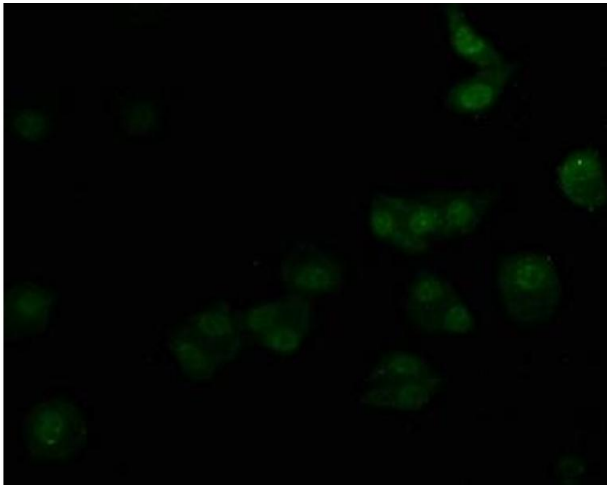
Buffer: Preservative: 0.03 % Proclin 300
Constituents: 50 % Glycerol, 0.01M PBS, pH 7.4

Preservative: ProClin

Precaution of Use: This product contains ProClin: a POISONOUS AND HAZARDOUS SUBSTANCE which should be handled by trained staff only.

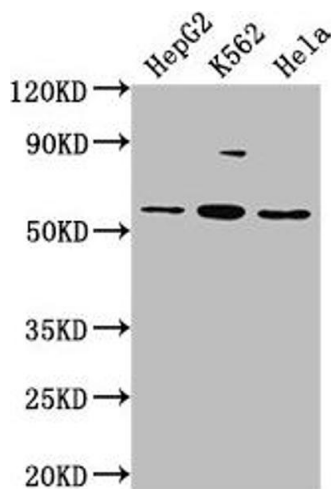
Storage: -20 °C,-80 °C

Storage Comment: Upon receipt, store at -20°C or -80°C. Avoid repeated freeze.



Immunofluorescence

Image 1. Immunofluorescence staining of HepG2 cells with ABIN7139715 at 1:50, counter-stained with DAPI. The cells were fixed in 4 % formaldehyde, permeabilized using 0.2 % Triton X-100 and blocked in 10 % normal Goat Serum. The cells were then incubated with the antibody overnight at 4 °C. The secondary antibody was Alexa Fluor 488-conjugated AffiniPure Goat Anti-Rabbit IgG(H+L).



Western Blotting

Image 2. Western Blot Positive WB detected in: HepG2 whole cell lysate, K562 whole cell lysate, HeLa whole cell lysate All lanes: ADRA1A antibody at 1:2000 Secondary Goat polyclonal to rabbit IgG at 1/50000 dilution Predicted band size: 52, 53, 48, 51, 33, 38, 36, 41 kDa Observed band size: 52 kDa