



Datasheet for ABIN7139729

anti-Apelin antibody



[Go to Product page](#)

1 Image

Overview

Quantity:	100 µg
Target:	Apelin (APLN)
Reactivity:	Human
Host:	Rabbit
Clonality:	Polyclonal
Conjugate:	This Apelin antibody is un-conjugated
Application:	ELISA, Immunohistochemistry (IHC)

Product Details

Immunogen:	Peptide sequence from Human Apelin protein
Isotype:	IgG
Cross-Reactivity:	Human
Purification:	>95%, Protein G purified

Target Details

Target:	Apelin (APLN)
Alternative Name:	APLN (APLN Products)
Background:	Background: Endogenous ligand for APJ, an alternative coreceptor with CD4 for HIV-1 infection. Inhibits HIV-1 entry in cells coexpressing CD4 and APJ. Apelin-36 has a greater inhibitory activity on HIV infection than other synthetic apelin derivatives. The oral intake in the colostrum and the milk could have a role in the modulation of the immune responses in neonates. May

Target Details

also have a role in the central control of body fluid homeostasis by influencing AVP release and drinking behavior.

Aliases: AGTRL1 ligand antibody, APEL antibody, APEL_HUMAN antibody, Apelin 13 antibody, Apelin-13 antibody, APJ endogenous ligand antibody, Apln antibody, XNPEP2 antibody

UniProt: [Q9ULZ1](#)

Pathways: [Positive Regulation of Peptide Hormone Secretion](#), [Hormone Activity](#), [Feeding Behaviour](#)

Application Details

Application Notes: Recommended dilution: IHC:1:10-1:100,

Restrictions: For Research Use only

Handling

Format: Liquid

Buffer: Preservative: 0.03 % Proclin 300
Constituents: 50 % Glycerol, 0.01M PBS, PH 7.4

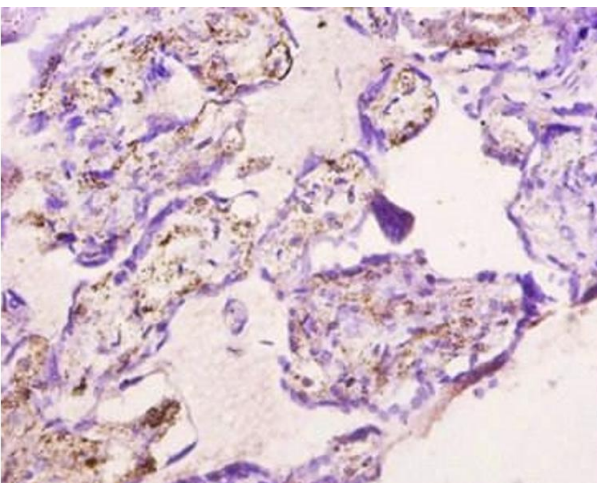
Preservative: ProClin

Precaution of Use: This product contains ProClin: a POISONOUS AND HAZARDOUS SUBSTANCE which should be handled by trained staff only.

Storage: -20 °C,-80 °C

Storage Comment: Upon receipt, store at -20°C or -80°C. Avoid repeated freeze.

Images



Immunohistochemistry

Image 1. Immunohistochemistry of paraffin-embedded human placenta tissue using ABIN7139729 at dilution of 1:10