

Datasheet for ABIN7139751
anti-CAMK2N1 antibody (AA 9-27)[Go to Product page](#)

1 Image

Overview

Quantity:	100 µL
Target:	CAMK2N1
Binding Specificity:	AA 9-27
Reactivity:	Human
Host:	Rabbit
Clonality:	Polyclonal
Conjugate:	This CAMK2N1 antibody is un-conjugated
Application:	ELISA, Immunofluorescence (IF)

Product Details

Immunogen:	Peptide sequence from Human Calcium/calmodulin-dependent protein kinase II inhibitor 1 protein (9-27AA)
Isotype:	IgG
Cross-Reactivity:	Human
Purification:	>95%, Protein G purified

Target Details

Target:	CAMK2N1
Alternative Name:	CAMK2N1 (CAMK2N1 Products)
Background:	Background: Potent and specific inhibitor of CaM-kinase II (CAMK2).

Target Details

Aliases: CAMK2N1 Calcium/calmodulin-dependent protein kinase II inhibitor 1 antibody, CaMKII inhibitory protein alpha antibody, CaMKIIN-alpha antibody

UniProt: [Q7Z7J9](#)

Application Details

Application Notes: Recommended dilution: IF:1:50-1:200,

Restrictions: For Research Use only

Handling

Format: Liquid

Buffer: Preservative: 0.03 % Proclin 300
Constituents: 50 % Glycerol, 0.01M PBS, pH 7.4

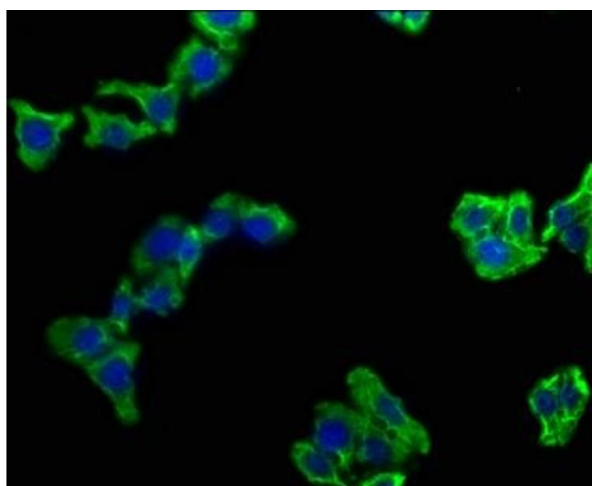
Preservative: ProClin

Precaution of Use: This product contains ProClin: a POISONOUS AND HAZARDOUS SUBSTANCE which should be handled by trained staff only.

Storage: -20 °C,-80 °C

Storage Comment: Upon receipt, store at -20°C or -80°C. Avoid repeated freeze.

Images



Immunofluorescence

Image 1. Immunofluorescence staining of HepG2 cells with ABIN7139751 at 1:100, counter-stained with DAPI. The cells were fixed in 4 % formaldehyde, permeabilized using 0.2 % Triton X-100 and blocked in 10 % normal Goat Serum. The cells were then incubated with the antibody overnight at 4 °C. The secondary antibody was Alexa Fluor 488-conjugated AffiniPure Goat Anti-Rabbit IgG(H+L).