

Datasheet for ABIN7139763  
**anti-CAPRIN2 antibody (AA 83-100)**[Go to Product page](#)

## 2 Images

## Overview

Quantity:	100 µL
Target:	CAPRIN2
Binding Specificity:	AA 83-100
Reactivity:	Human
Host:	Rabbit
Clonality:	Polyclonal
Conjugate:	This CAPRIN2 antibody is un-conjugated
Application:	ELISA, Immunofluorescence (IF), Immunohistochemistry (IHC)

## Product Details

Immunogen:	Peptide sequence from Human Caprin-2 protein (83-100AA)
Isotype:	IgG
Cross-Reactivity:	Human
Purification:	Antigen Affinity Purified

## Target Details

Target:	CAPRIN2
Alternative Name:	CAPRIN2 ( <a href="#">CAPRIN2 Products</a> )
Background:	Background: Promotes phosphorylation of the Wnt coreceptor LRP6, leading to increased activity of the canonical Wnt signaling pathway (PubMed:18762581). Faciliates constitutive

## Target Details

LRP6 phosphorylation by CDK14/CCNY during G2/M stage of the cell cycle, which may potentiate cells for Wnt signaling (PubMed:27821587). May regulate the transport and translation of mRNAs, modulating for instance the expression of proteins involved in synaptic plasticity in neurons (By similarity). Involved in regulation of growth as erythroblasts shift from a highly proliferative state towards their terminal phase of differentiation (PubMed:14593112). May be involved in apoptosis (PubMed:14593112).

Aliases: C1q domain-containing protein 1 antibody, C1QDC1 antibody, CAPR2\_HUMAN antibody, Caprin family member 2 antibody, Caprin-2 antibody, caprin2 antibody, Cytoplasmic activation/proliferation-associated protein 2 antibody, EEG 1 antibody, EEG1 antibody, Gastric cancer multidrug resistance-associated protein antibody, KIAA1873 antibody, Protein EEG-1 antibody, RNA granule protein 140 antibody, RNG140 antibody

UniProt: [Q6IMN6](#)

## Application Details

Application Notes: Recommended dilution: IHC:1:20-1:200, IF:1:50-1:200,

Restrictions: For Research Use only

## Handling

Format: Liquid

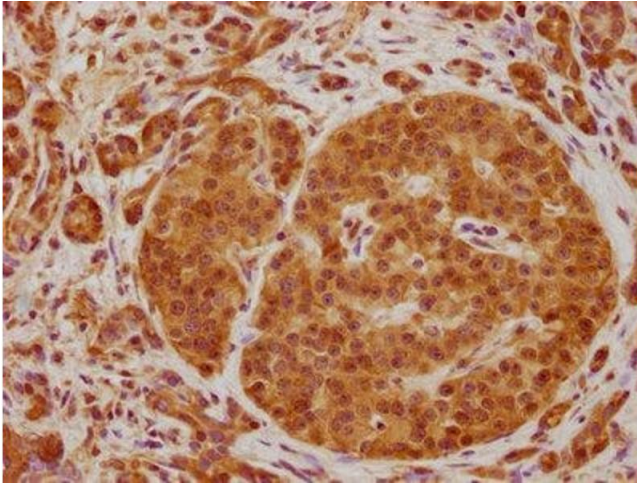
Buffer: Preservative: 0.03 % Proclin 300  
Constituents: 50 % Glycerol, 0.01M PBS, pH 7.4

Preservative: ProClin

Precaution of Use: This product contains ProClin: a POISONOUS AND HAZARDOUS SUBSTANCE which should be handled by trained staff only.

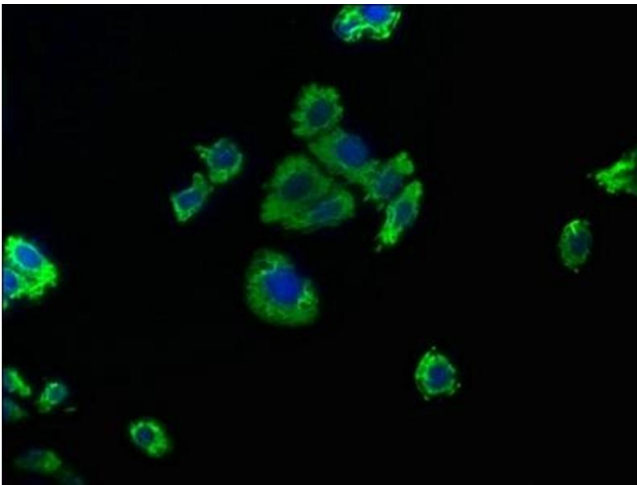
Storage: -20 °C,-80 °C

Storage Comment: Upon receipt, store at -20°C or -80°C. Avoid repeated freeze.



#### Immunohistochemistry

**Image 1.** IHC image of ABIN7139763 diluted at 1:100 and staining in paraffin-embedded human pancreatic cancer performed on a Leica Bond™ system. After dewaxing and hydration, antigen retrieval was mediated by high pressure in a citrate buffer (pH 6.0). Section was blocked with 10 % normal goat serum 30 min at RT. Then primary antibody (1 % BSA) was incubated at 4 °C overnight. The primary is detected by a biotinylated secondary antibody and visualized using an HRP conjugated SP system.



#### Immunofluorescence

**Image 2.** Immunofluorescence staining of HepG2 cells with ABIN7139763 at 1:50, counter-stained with DAPI. The cells were fixed in 4 % formaldehyde, permeabilized using 0.2 % Triton X-100 and blocked in 10 % normal Goat Serum. The cells were then incubated with the antibody overnight at 4 °C. The secondary antibody was Alexa Fluor 488-conjugated AffiniPure Goat Anti-Rabbit IgG(H+L).