

Datasheet for ABIN7139823
anti-EIF4G3 antibody (AA 158-176)[Go to Product page](#)

2 Images

Overview

Quantity:	100 µL
Target:	EIF4G3
Binding Specificity:	AA 158-176
Reactivity:	Human
Host:	Rabbit
Clonality:	Polyclonal
Conjugate:	This EIF4G3 antibody is un-conjugated
Application:	ELISA, Immunohistochemistry (IHC), Immunofluorescence (IF)

Product Details

Immunogen:	Peptide sequence from Human Eukaryotic translation initiation factor 4 gamma 3 protein (158-176AA)
Isotype:	IgG
Cross-Reactivity:	Human
Purification:	>95%, Protein G purified

Target Details

Target:	EIF4G3
Alternative Name:	EIF4G3 (EIF4G3 Products)
Background:	Background: Probable component of the protein complex eIF4F, which is involved in the

Target Details

recognition of the mRNA cap, ATP-dependent unwinding of 5'-terminal secondary structure and recruitment of mRNA to the ribosome. Thought to be a functional homolog of EIF4G1.
Aliases: eIF-4-gamma 3 antibody, eIF-4-gamma II antibody, eIF-4G 3 antibody, eIF4G 3 antibody, EIF4G3 antibody, eIF4GII antibody, Eukaryotic translation initiation factor 4 gamma 3 antibody, eukaryotic translation initiation factor 4 gamma, 3 antibody, eukaryotic translation initiation factor-4 gamma, 3 antibody, IF4G3_HUMAN antibody

UniProt: [O43432](#)

Application Details

Application Notes: Recommended dilution: IHC:1:500-1:1000, IF:1:50-1:200,

Restrictions: For Research Use only

Handling

Format: Liquid

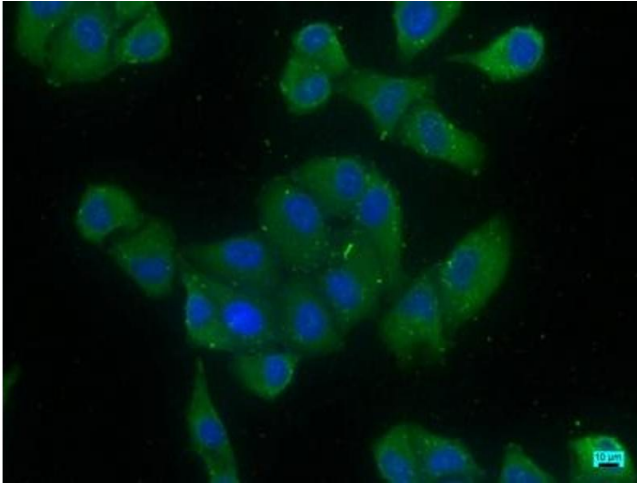
Buffer: Preservative: 0.03 % Proclin 300
Constituents: 50 % Glycerol, 0.01M PBS, pH 7.4

Preservative: ProClin

Precaution of Use: This product contains ProClin: a POISONOUS AND HAZARDOUS SUBSTANCE which should be handled by trained staff only.

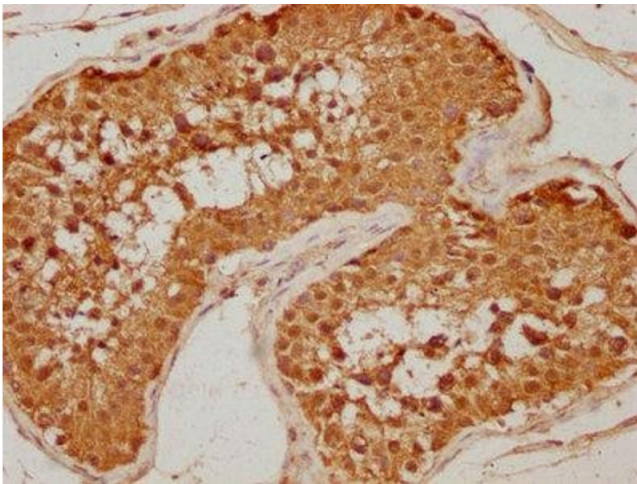
Storage: -20 °C, -80 °C

Storage Comment: Upon receipt, store at -20°C or -80°C. Avoid repeated freeze.



Immunofluorescence

Image 1. Immunofluorescence staining of HeLa cells with ABIN7139823 at 1:166, counter-stained with DAPI. The cells were fixed in 4 % formaldehyde, permeabilized using 0.2 % Triton X-100 and blocked in 10 % normal Goat Serum. The cells were then incubated with the antibody overnight at 4 °C. The secondary antibody was Alexa Fluor 488-conjugated AffiniPure Goat Anti-Rabbit IgG(H+L).



Immunohistochemistry

Image 2. IHC image of ABIN7139823 diluted at 1:500 and staining in paraffin-embedded human testis tissue performed on a Leica Bond™ system. After dewaxing and hydration, antigen retrieval was mediated by high pressure in a citrate buffer (pH 6.0). Section was blocked with 10 % normal goat serum 30 min at RT. Then primary antibody (1 % BSA) was incubated at 4 °C overnight. The primary is detected by a biotinylated secondary antibody and visualized using an HRP conjugated SP system.