

Datasheet for ABIN7139839
anti-Foxo6 antibody (AA 211-218)

2 Images

[Go to Product page](#)

Overview

Quantity:	100 µL
Target:	Foxo6
Binding Specificity:	AA 211-218
Reactivity:	Human
Host:	Rabbit
Clonality:	Polyclonal
Conjugate:	This Foxo6 antibody is un-conjugated
Application:	ELISA, Immunohistochemistry (IHC), Immunofluorescence (IF)

Product Details

Immunogen:	Peptide sequence from Human Forkhead box protein O6 protein (211-218AA)
Isotype:	IgG
Cross-Reactivity:	Human
Purification:	>95%, Protein G purified

Target Details

Target:	Foxo6
Alternative Name:	FOXO6 (Foxo6 Products)
Background:	Background: Transcriptional activator. Aliases: FOXO6Forkhead box protein O6 antibody

Target Details

UniProt:	A8MYZ6
Pathways:	Regulation of Muscle Cell Differentiation

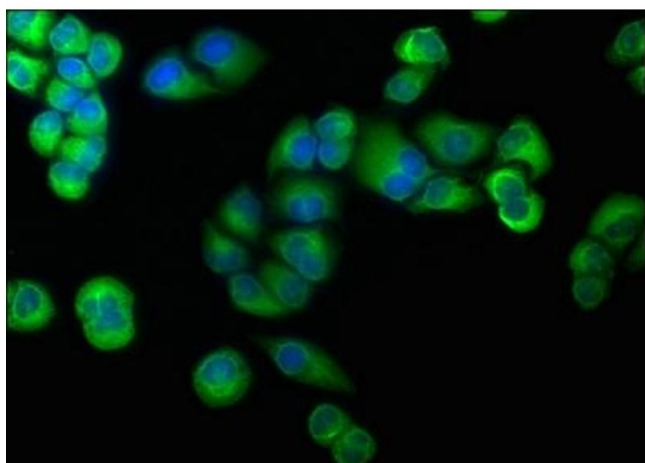
Application Details

Application Notes:	Recommended dilution: IHC:1:500-1:1000, IF:1:50-1:200,
Restrictions:	For Research Use only

Handling

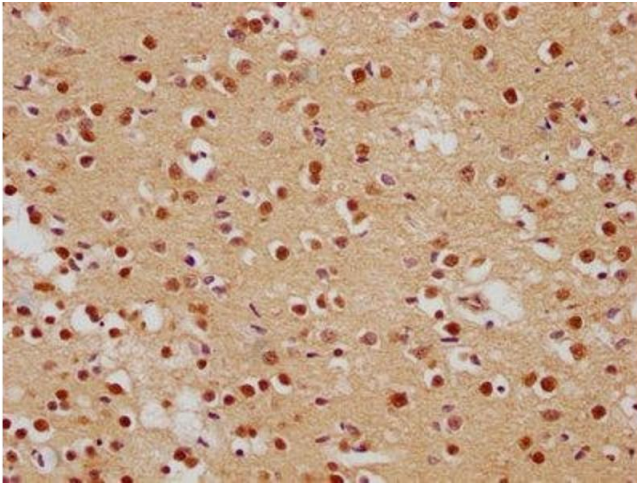
Format:	Liquid
Buffer:	Preservative: 0.03 % Proclin 300 Constituents: 50 % Glycerol, 0.01M PBS, pH 7.4
Preservative:	ProClin
Precaution of Use:	This product contains ProClin: a POISONOUS AND HAZARDOUS SUBSTANCE which should be handled by trained staff only.
Storage:	-20 °C,-80 °C
Storage Comment:	Upon receipt, store at -20°C or -80°C. Avoid repeated freeze.

Images



Immunofluorescence

Image 1. Immunofluorescence staining of Hela cells with ABIN7139839 at 1:166, counter-stained with DAPI. The cells were fixed in 4 % formaldehyde, permeabilized using 0.2 % Triton X-100 and blocked in 10 % normal Goat Serum. The cells were then incubated with the antibody overnight at 4 °C. The secondary antibody was Alexa Fluor 488-conjugated AffiniPure Goat Anti-Rabbit IgG(H+L).



Immunohistochemistry

Image 2. IHC image of ABIN7139839 diluted at 1:500 and staining in paraffin-embedded human brain tissue performed on a Leica Bond™ system. After dewaxing and hydration, antigen retrieval was mediated by high pressure in a citrate buffer (pH 6.0). Section was blocked with 10 % normal goat serum 30 min at RT. Then primary antibody (1 % BSA) was incubated at 4 °C overnight. The primary is detected by a biotinylated secondary antibody and visualized using an HRP conjugated SP system.