



[Go to Product page](#)

Datasheet for ABIN7139847
anti-APH1B antibody (AA 93-110)

1 Image

Overview

Quantity:	100 µL
Target:	APH1B (Aph1b)
Binding Specificity:	AA 93-110
Reactivity:	Human
Host:	Rabbit
Clonality:	Polyclonal
Conjugate:	This APH1B antibody is un-conjugated
Application:	Western Blotting (WB), ELISA

Product Details

Immunogen:	Peptide sequence from Human Gamma-secretase subunit APH-1B protein (93-110AA)
Isotype:	IgG
Cross-Reactivity:	Human
Purification:	>95%, Protein G purified

Target Details

Target:	APH1B (Aph1b)
Alternative Name:	APH1B (Aph1b Products)
Background:	Background: Probable subunit of the gamma-secretase complex, an endoprotease complex that catalyzes the intramembrane cleavage of integral proteins such as Notch receptors and

Target Details

APP (beta-amyloid precursor protein). It probably represents a stabilizing cofactor for the presenilin homodimer that promotes the formation of a stable complex. Probably present in a minority of gamma-secretase complexes compared to APH1A.

Aliases: Anterior pharynx defective 1 homolog B (C. elegans) antibody, Anterior pharynx defective 1 homolog B antibody, Anterior pharynx defective 1B like antibody, Anterior pharynx defective 1b short splicing variant antibody, APH 1B antibody, Aph 1beta antibody, APH-1b antibody, Aph-1beta antibody, Aph1 beta antibody, aph1b antibody, APH1B_HUMAN antibody, Aph1beta antibody, DKFZp564D0372 antibody, Gamma secretase subunit APH 1B antibody, Gamma secretase subunit APH1B antibody, Gamma secretase sununit antibody, Gamma-secretase subunit Aph-1b antibody, Presenilin stabilisation factor like antibody, Presenilin-stabilization factor-like antibody, PRO 1328 antibody, PRO1328 antibody, PSFL antibody, TAAV 688 antibody, TAAV688 antibody

UniProt: [Q8WW43](#)

Pathways: [Notch Signaling](#), [Neurotrophin Signaling Pathway](#)

Application Details

Application Notes: Recommended dilution: WB:1:1000-1:5000,

Restrictions: For Research Use only

Handling

Format: Liquid

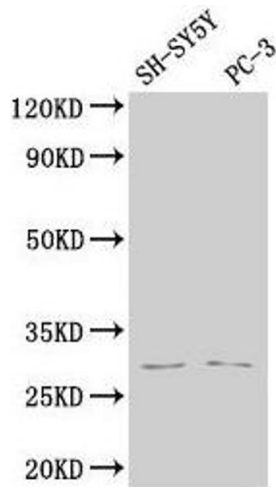
Buffer: Preservative: 0.03 % Proclin 300
Constituents: 50 % Glycerol, 0.01M PBS, pH 7.4

Preservative: ProClin

Precaution of Use: This product contains ProClin: a POISONOUS AND HAZARDOUS SUBSTANCE which should be handled by trained staff only.

Storage: -20 °C,-80 °C

Storage Comment: Upon receipt, store at -20°C or -80°C. Avoid repeated freeze.



Western Blotting

Image 1. Western Blot Positive WB detected in: SH-SY5Y whole cell lysate, PC-3 whole cell lysate All lanes: APH1B antibody at 1:2000 Secondary Goat polyclonal to rabbit IgG at 1/50000 dilution Predicted band size: 29, 25 kDa Observed band size: 29 kDa