



[Go to Product page](#)

Datasheet for ABIN7139851
anti-PEN2 antibody (AA 39-57)

2 Images

Overview

Quantity:	100 µL
Target:	PEN2 (PSENEN)
Binding Specificity:	AA 39-57
Reactivity:	Human
Host:	Rabbit
Clonality:	Polyclonal
Conjugate:	This PEN2 antibody is un-conjugated
Application:	ELISA, Immunohistochemistry (IHC)

Product Details

Immunogen:	Peptide sequence from Human Gamma-secretase subunit PEN-2 protein (39-57AA)
Isotype:	IgG
Cross-Reactivity:	Human
Purification:	>95%, Protein G purified

Target Details

Target:	PEN2 (PSENEN)
Alternative Name:	PSENEN (PSENEN Products)
Background:	Background: Essential subunit of the gamma-secretase complex, an endoprotease complex that catalyzes the intramembrane cleavage of integral membrane proteins such as Notch

Target Details

receptors and APP (beta-amyloid precursor protein) (PubMed:12522139, PubMed:12763021, PubMed:12740439, PubMed:12679784, PubMed:24941111). The gamma-secretase complex plays a role in Notch and Wnt signaling cascades and regulation of downstream processes via its role in processing key regulatory proteins, and by regulating cytosolic CTNNB1 levels (Probable). PSENEN modulates both endoproteolysis of presenilin and gamma-secretase activity (PubMed:12522139, PubMed:12763021, PubMed:12740439, PubMed:12679784, PubMed:24941111).

Aliases: Gamma secretase subunit PEN 2 antibody, Gamma Secretase Subunit PEN2 antibody, Gamma-secretase subunit PEN-2 antibody, Hematopoietic stem/progenitor cells protein MDS033 antibody, MDS033 antibody, MSTP064 antibody, PEN 2 antibody, PEN2_HUMAN antibody, Presenilin Enhancer 2 antibody, Presenilin enhancer 2 homolog antibody, Presenilin enhancer protein 2 antibody, PSEN2 antibody, psenen antibody

UniProt: [Q9NZ42](#)

Pathways: [Notch Signaling](#), [Neurotrophin Signaling Pathway](#)

Application Details

Application Notes: Recommended dilution: IHC:1:200-1:500,

Restrictions: For Research Use only

Handling

Format: Liquid

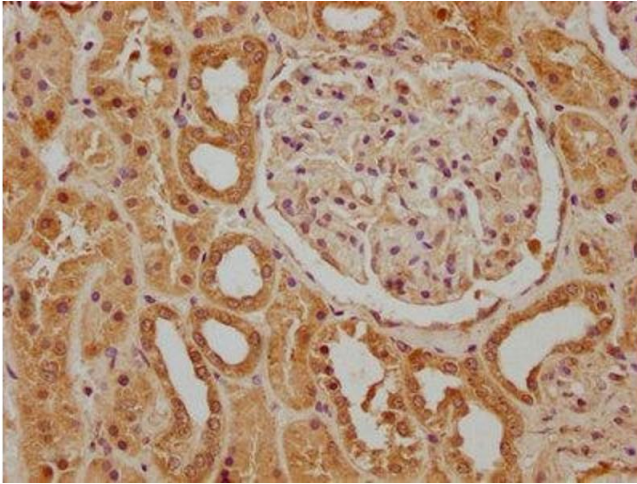
Buffer: Preservative: 0.03 % Proclin 300
Constituents: 50 % Glycerol, 0.01M PBS, pH 7.4

Preservative: ProClin

Precaution of Use: This product contains ProClin: a POISONOUS AND HAZARDOUS SUBSTANCE which should be handled by trained staff only.

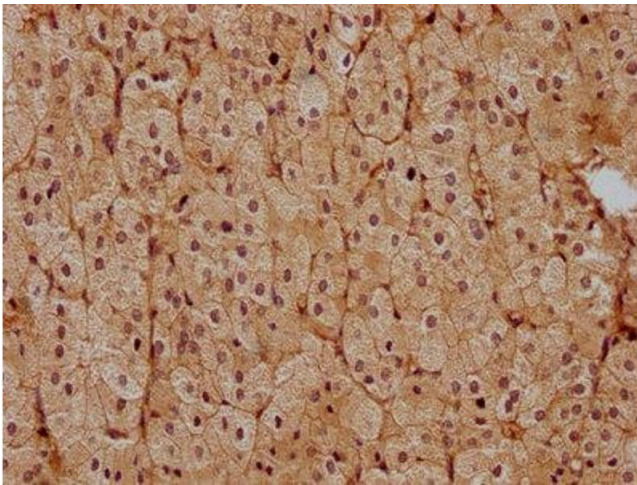
Storage: -20 °C,-80 °C

Storage Comment: Upon receipt, store at -20°C or -80°C. Avoid repeated freeze.



Immunohistochemistry

Image 1. IHC image of ABIN7139851 diluted at 1:400 and staining in paraffin-embedded human kidney tissue performed on a Leica Bond™ system. After dewaxing and hydration, antigen retrieval was mediated by high pressure in a citrate buffer (pH 6.0). Section was blocked with 10 % normal goat serum 30 min at RT. Then primary antibody (1 % BSA) was incubated at 4 °C overnight. The primary is detected by a biotinylated secondary antibody and visualized using an HRP conjugated SP system.



Immunohistochemistry

Image 2. IHC image of ABIN7139851 diluted at 1:400 and staining in paraffin-embedded human adrenal gland tissue performed on a Leica Bond™ system. After dewaxing and hydration, antigen retrieval was mediated by high pressure in a citrate buffer (pH 6.0). Section was blocked with 10 % normal goat serum 30 min at RT. Then primary antibody (1 % BSA) was incubated at 4 °C overnight. The primary is detected by a biotinylated secondary antibody and visualized using an HRP conjugated SP system.