

Datasheet for ABIN7139855
anti-GIP antibody (AA 113-131)[Go to Product page](#)

2 Images

Overview

Quantity:	100 µL
Target:	GIP
Binding Specificity:	AA 113-131
Reactivity:	Human
Host:	Rabbit
Clonality:	Polyclonal
Conjugate:	This GIP antibody is un-conjugated
Application:	Immunohistochemistry (IHC), ELISA

Product Details

Immunogen:	Peptide sequence from Human Gastric inhibitory polypeptide protein (113-131AA)
Isotype:	IgG
Cross-Reactivity:	Human
Purification:	>95%, Protein G purified

Target Details

Target:	GIP
Alternative Name:	GIP (GIP Products)
Background:	Background: Potent stimulator of insulin secretion and relatively poor inhibitor of gastric acid secretion.

Target Details

Aliases: Gastric Inhibitory Peptide antibody, Gastric inhibitory polypeptide antibody, Gastric inhibitory polypeptide precursor antibody, GIP antibody, GIP_HUMAN antibody, Glucose dependent insulintropic polypeptide antibody, Glucose-dependent insulintropic polypeptide antibody, Incretin hormone antibody

UniProt: [P09681](#)

Pathways: [Positive Regulation of Peptide Hormone Secretion](#), [Peptide Hormone Metabolism](#), [Hormone Activity](#), [Regulation of Lipid Metabolism by PPARalpha](#), [Lipid Metabolism](#)

Application Details

Application Notes: Recommended dilution: IHC:1:200-1:500,

Restrictions: For Research Use only

Handling

Format: Liquid

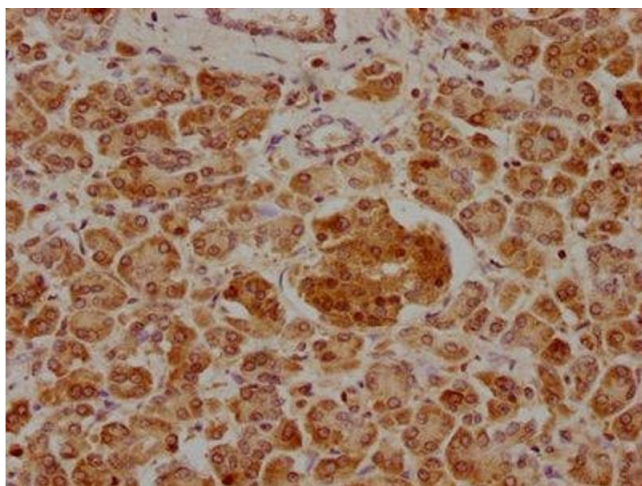
Buffer: Preservative: 0.03 % Proclin 300
Constituents: 50 % Glycerol, 0.01M PBS, pH 7.4

Preservative: ProClin

Precaution of Use: This product contains ProClin: a POISONOUS AND HAZARDOUS SUBSTANCE which should be handled by trained staff only.

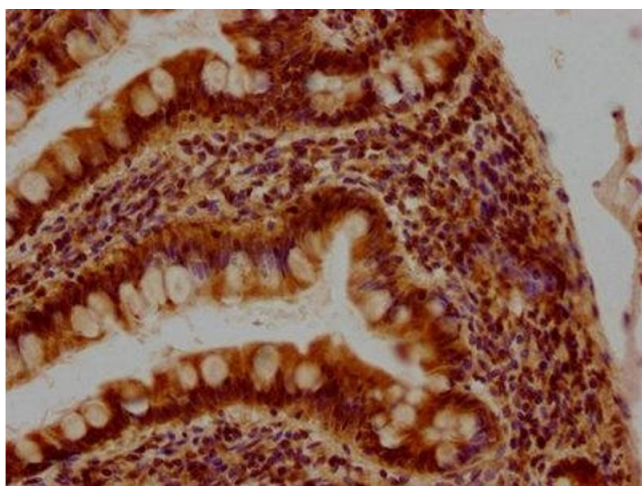
Storage: -20 °C, -80 °C

Storage Comment: Upon receipt, store at -20°C or -80°C. Avoid repeated freeze.



Immunohistochemistry

Image 1. IHC image of ABIN7139855 diluted at 1:400 and staining in paraffin-embedded human pancreatic tissue performed on a Leica Bond™ system. After dewaxing and hydration, antigen retrieval was mediated by high pressure in a citrate buffer (pH 6.0). Section was blocked with 10 % normal goat serum 30 min at RT. Then primary antibody (1 % BSA) was incubated at 4 °C overnight. The primary is detected by a biotinylated secondary antibody and visualized using an HRP conjugated SP system.



Immunohistochemistry

Image 2. IHC image of ABIN7139855 diluted at 1:400 and staining in paraffin-embedded human small intestine tissue performed on a Leica Bond™ system. After dewaxing and hydration, antigen retrieval was mediated by high pressure in a citrate buffer (pH 6.0). Section was blocked with 10 % normal goat serum 30 min at RT. Then primary antibody (1 % BSA) was incubated at 4 °C overnight. The primary is detected by a biotinylated secondary antibody and visualized using an HRP conjugated SP system.