



[Go to Product page](#)

Datasheet for ABIN7139859
anti-GDF3 antibody (AA 202-222)

1 Image

Overview

Quantity:	100 µL
Target:	GDF3
Binding Specificity:	AA 202-222
Reactivity:	Human
Host:	Rabbit
Clonality:	Polyclonal
Conjugate:	This GDF3 antibody is un-conjugated
Application:	ELISA, Immunofluorescence (IF)

Product Details

Immunogen:	Peptide sequence from Human Growth/differentiation factor 3 protein (202-222AA)
Isotype:	IgG
Cross-Reactivity:	Human
Purification:	Antigen Affinity Purified

Target Details

Target:	GDF3
Alternative Name:	GDF3 (GDF3 Products)
Background:	Background: Growth factor involved in early embryonic development and adipose-tissue homeostasis. During embryogenesis controls formation of anterior visceral endoderm and

Target Details

mesoderm and the establishment of anterior-posterior identity through a receptor complex comprising the receptor ACVR1B and the coreceptor TDGF1/Cripto (By similarity). Regulates adipose-tissue homeostasis and energy balance under nutrient overload in part by signaling through the receptor complex based on ACVR1C and TDGF1/Cripto (PubMed:21805089).
Aliases: C78318 antibody, ecat9 antibody, GDF 3 antibody, GDF-3 antibody, GDF3 antibody, GDF3_HUMAN antibody, Growth differentiation factor 3 antibody, Growth/differentiation factor 3 antibody, KFS3 antibody, MCOP7 antibody, MCOPCB6 antibody, MGC123990 antibody, MGC123991 antibody, RGD1564178 antibody, Vgr 2 antibody, Vgr2 antibody

UniProt: [Q9NR23](#)

Application Details

Application Notes: Recommended dilution: IF:1:50-1:200,

Restrictions: For Research Use only

Handling

Format: Liquid

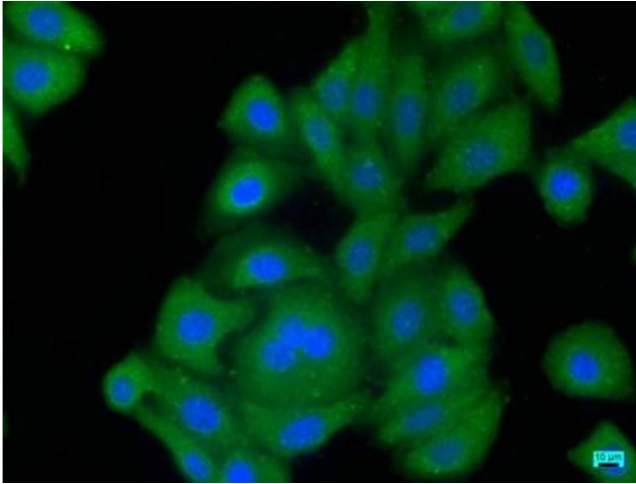
Buffer: Preservative: 0.03 % Proclin 300
Constituents: 50 % Glycerol, 0.01M PBS, pH 7.4

Preservative: ProClin

Precaution of Use: This product contains ProClin: a POISONOUS AND HAZARDOUS SUBSTANCE which should be handled by trained staff only.

Storage: -20 °C,-80 °C

Storage Comment: Upon receipt, store at -20°C or -80°C. Avoid repeated freeze.



Immunofluorescence

Image 1. Immunofluorescence staining of HepG2 cells with ABIN7139859 at 1:50, counter-stained with DAPI. The cells were fixed in 4 % formaldehyde, permeabilized using 0.2 % Triton X-100 and blocked in 10 % normal Goat Serum. The cells were then incubated with the antibody overnight at 4 °C. The secondary antibody was Alexa Fluor 488-conjugated AffiniPure Goat Anti-Rabbit IgG(H+L).