



[Go to Product page](#)

Datasheet for ABIN7139875  
**anti-HTN3 antibody (AA 20-34)**

1 Image

Overview

Quantity:	100 µL
Target:	HTN3
Binding Specificity:	AA 20-34
Reactivity:	Human
Host:	Rabbit
Clonality:	Polyclonal
Conjugate:	This HTN3 antibody is un-conjugated
Application:	ELISA, Immunohistochemistry (IHC)

Product Details

Immunogen:	Peptide sequence from Human Histatin-3 protein (20-34AA)
Isotype:	IgG
Cross-Reactivity:	Human
Purification:	>95%, Antigen Affinity purified & Affinity purified

Target Details

Target:	HTN3
Alternative Name:	HTN3 ( <a href="#">HTN3 Products</a> )
Background:	Background: Histatins are salivary proteins that are considered to be major precursors of the protective proteinaceous structure on tooth surfaces (enamel pellicle). In addition, histatins

exhibit antibacterial and antifungal activities. His3-(20-43)-peptide (histatin-5) is especially effective against *C.albicans* and *C.neoformans*, and inhibits Lys-gingipain and Arg-gingipain (rgpB) from *P.gingivalis*. In addition, His3-(20-43)-peptide is a potent inhibitor of metalloproteinases MMP2 and MMP9.

Aliases: HTN3 antibody, HIS2 antibody, Histatin-3 antibody, Basic histidine-rich protein antibody, Hst antibody, Histidine-rich protein 3 antibody, PB) [Cleaved into: Histatin-3, His3-(20-44)-peptide antibody, His3 20/44 antibody, His3-(1-25)-peptide antibody, His3 1/25 antibody, Histatin-3 1/25 antibody, Histatin-6), His3-(20-43)-peptide antibody, His3 20/43 antibody, His3-(1-24)-peptide antibody, His3 1/24 antibody, Histatin-3 1/24 antibody, Histatin-5), His3-(20-32)-peptide antibody, His3 20/32 antibody, His3-(1-13)-peptide antibody, His3 1/13 antibody, Histatin-3 1/13), His3-(20-31)-peptide antibody, His3 20/31 antibody, His3-(1-12)-peptide antibody, His3 1/12 antibody, Histatin-3 1/12), His3-(20-30)-peptide antibody, His3 20/30 antibody, His3-(1-11)-peptide antibody, His3 1/11 antibody, Histatin-3 1/11), His3-(24-32)-peptide antibody, His3 24/32 antibody, His3-(5-13)-peptide antibody, His3 5/13 antibody, Histatin-3 5/13), His3-(24-31)-peptide antibody, His3 24/31 antibody, His3-(5-12)-peptide antibody, His3 5/12 antibody, Histatin-11 antibody, Histatin-3 5/12), His3-(24-30)-peptide antibody, His3 24/30 antibody, His3-(5-11)-peptide antibody, His3 5/11 antibody, Histatin-12 antibody, Histatin-3 5/11), His3-(25-32)-peptide antibody, His3 25/32 antibody, His3-(6-13)-peptide antibody, His3 6/13 antibody, Histatin-3 6/13), His3-(25-30)-peptide antibody, His3 25/30 antibody, His3-(6-11)-peptide antibody, His3 6/11 antibody, Histatin-3 6/11), His3-(26-32)-peptide antibody, His3 26/32 antibody, His3-(7-13)-peptide antibody, His3 7/13 antibody, Histatin-3 7/13), His3-(26-31)-peptide antibody, His3 26/31 antibody, His3-(7-12)-peptide antibody, His3 7/12 antibody, Histatin-3 7/12), His3-(26-30)-peptide antibody, His3 26/30 antibody, His3-(7-11)-peptide antibody, His3 7/11 antibody, Histatin-3 7/11), His3-(31-51)-peptide antibody, His3 31/51 antibody, His3-(12-32)-peptide antibody, His3 12/32 antibody, Histatin-3 12/32 antibody, Histatin-4), His3-(31-44)-peptide antibody, His3 31/44 antibody, His3-(12-25)-peptide antibody, His3 12/25 antibody, Histatin-3 12/25 antibody, Histatin-9), His3-(31-43)-peptide antibody, His3 31/43 antibody, His3-(12-24)-peptide antibody, His3 12/24 antibody, Histatin-3 12/24 antibody, Histatin-7), His3-(32-44)-peptide antibody, His3 32/44 antibody, His3-(13-25)-peptide antibody, His3 13/25 antibody, Histatin-10 antibody, Histatin-3 13/25), His3-(32-43)-peptide antibody, His3 32-43 antibody, His3-(13-24)-peptide antibody, His3 13/24 antibody, Histatin-3 13/24 antibody, Histatin-8), His3-(33-44)-peptide antibody, His3 33/44 antibody, His3-(14-25)-peptide antibody, His3 14/25 antibody, Histatin-3 14/25), His3-(33-43)-peptide antibody, His3 33/43 antibody, His3-(14-24)-peptide antibody, His3 14/24 antibody, Histatin-3 14/24), His3-(34-44)-peptide antibody, His3 34/44 antibody, His3-(15-25)-peptide antibody, His3 15/25 antibody, Histatin-3 15/25), His3-(34-43)-peptide antibody, His3 34/43 antibody, His3-(15-24)-

## Target Details

peptide antibody, His3 15/24 antibody, Histatin-3 15/24), His3-(45-51)-peptide antibody, His3 45/51 antibody, His3-(26-32)-peptide antibody, His3 26/32 antibody, Histatin-3 26/32), His3-(47-51)-peptide antibody, His3 47/51 antibody, His3-(28-32)-peptide antibody, His3 28/32 antibody, Histatin-3 28/32), His3-(48-51)-peptide antibody, His3 48/51 antibody, His3-(29-32)-peptide antibody, His3 29/32 antibody, Histatin-3 29/32)] antibody

UniProt: [P15516](#)

## Application Details

Application Notes: Recommended dilution: IHC:1:100-1:500,

Restrictions: For Research Use only

## Handling

Format: Liquid

Buffer: Preservative: 0.03 % Proclin 300  
Constituents: 50 % Glycerol, 0.01M PBS, PH 7.4

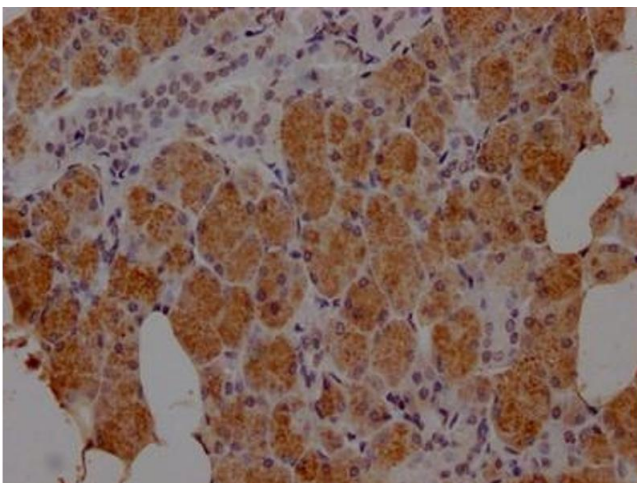
Preservative: ProClin

Precaution of Use: This product contains ProClin: a POISONOUS AND HAZARDOUS SUBSTANCE which should be handled by trained staff only.

Storage: -20 °C,-80 °C

Storage Comment: Upon receipt, store at -20°C or -80°C. Avoid repeated freeze.

## Images



### Immunohistochemistry

**Image 1.** IHC image of ABIN7139875 diluted at 1:100 and staining in paraffin-embedded human salivary gland tissue performed on a Leica Bond™ system. After dewaxing and hydration, antigen retrieval was mediated by high pressure in a citrate buffer (pH 6.0). Section was blocked with 10 % normal goat serum 30 min at RT. Then primary antibody (1 % BSA) was incubated at 4 °C overnight. The primary is detected by a Goat anti-rabbit IgG labeled by HRP and

visualized using 0.05 % DAB.