

Datasheet for ABIN7139916
anti-LPAR5 antibody (AA 310-326)

2 Images

[Go to Product page](#)

Overview

Quantity:	100 µL
Target:	LPAR5
Binding Specificity:	AA 310-326
Reactivity:	Human
Host:	Rabbit
Clonality:	Polyclonal
Conjugate:	This LPAR5 antibody is un-conjugated
Application:	ELISA, Immunohistochemistry (IHC), Immunofluorescence (IF)

Product Details

Immunogen:	Peptide sequence from Human Lysophosphatidic acid receptor 5 protein (310-326AA)
Isotype:	IgG
Cross-Reactivity:	Human
Purification:	Antigen Affinity Purified

Target Details

Target:	LPAR5
Alternative Name:	LPAR5 (LPAR5 Products)
Background:	Background: Receptor for lysophosphatidic acid (LPA), a mediator of diverse cellular activities. Aliases: G protein coupled receptor 92 antibody, G-protein coupled receptor 92 antibody, G-

Target Details

protein coupled receptor 93 antibody, GPCR GPR92 antibody, GPR 92 antibody, GPR 93 antibody, GPR92 antibody, GPR93 antibody, KPG 010 antibody, LPA receptor 5 antibody, LPA-5 antibody, Lpar5 antibody, LPAR5_HUMAN antibody, Lysophosphatidic acid receptor 5 antibody, Probable G protein coupled receptor 92 antibody, Putative G protein coupled receptor 92 antibody

UniProt: [Q9H1C0](#)

Application Details

Application Notes: Recommended dilution: IHC:1:20-1:200, IF:1:50-1:200,

Restrictions: For Research Use only

Handling

Format: Liquid

Buffer: Preservative: 0.03 % Proclin 300
Constituents: 50 % Glycerol, 0.01M PBS, pH 7.4

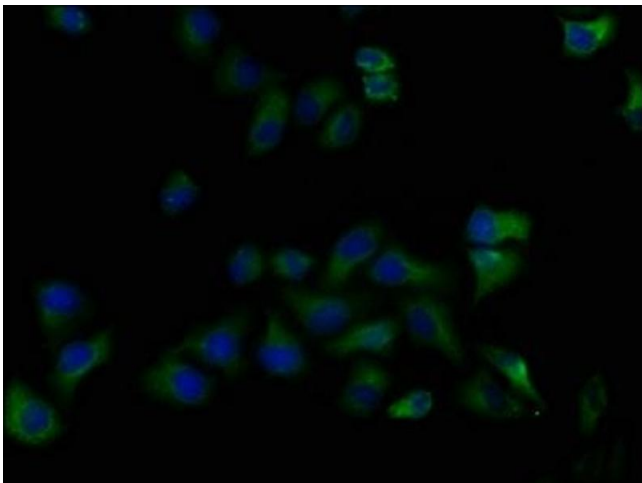
Preservative: ProClin

Precaution of Use: This product contains ProClin: a POISONOUS AND HAZARDOUS SUBSTANCE which should be handled by trained staff only.

Storage: -20 °C,-80 °C

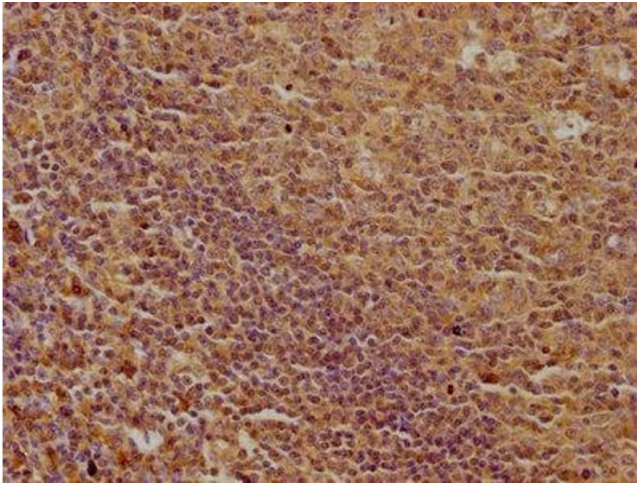
Storage Comment: Upon receipt, store at -20°C or -80°C. Avoid repeated freeze.

Images



Immunofluorescence

Image 1. Immunofluorescence staining of Hela cells with ABIN7139916 at 1:50, counter-stained with DAPI. The cells were fixed in 4 % formaldehyde, permeabilized using 0.2 % Triton X-100 and blocked in 10 % normal Goat Serum. The cells were then incubated with the antibody overnight at 4 °C. The secondary antibody was Alexa Fluor 488-conjugated AffiniPure Goat Anti-Rabbit IgG(H+L).



Immunohistochemistry

Image 2. IHC image of ABIN7139916 diluted at 1:100 and staining in paraffin-embedded human tonsil tissue performed on a Leica Bond™ system. After dewaxing and hydration, antigen retrieval was mediated by high pressure in a citrate buffer (pH 6.0). Section was blocked with 10 % normal goat serum 30 min at RT. Then primary antibody (1 % BSA) was incubated at 4 °C overnight. The primary is detected by a biotinylated secondary antibody and visualized using an HRP conjugated SP system.