



[Go to Product page](#)

Datasheet for ABIN7139920
anti-LPAR6 antibody (AA 292-313)

3 Images

Overview

Quantity:	100 µL
Target:	LPAR6
Binding Specificity:	AA 292-313
Reactivity:	Human
Host:	Rabbit
Clonality:	Polyclonal
Conjugate:	This LPAR6 antibody is un-conjugated
Application:	Western Blotting (WB), ELISA, Immunohistochemistry (IHC), Immunofluorescence (IF)

Product Details

Immunogen:	Peptide sequence from Human Lysophosphatidic acid receptor 6 protein (292-313AA)
Isotype:	IgG
Cross-Reactivity:	Human
Purification:	>95%, Protein G purified

Target Details

Target:	LPAR6
Alternative Name:	LPAR6 (LPAR6 Products)
Background:	Background: Binds to oleoyl-L-alpha-lysophosphatidic acid (LPA). Intracellular cAMP is involved in the receptor activation. Important for the maintenance of hair growth and texture.

Target Details

Aliases: ARWH1 antibody, G protein coupled purinergic receptor P2Y5 antibody, LAH 3 antibody, LAH3 antibody, LPA receptor 6 antibody, LPA-6 antibody, LPAR 6 antibody, Lpar6 antibody, LPAR6_HUMAN antibody, Lysophosphatidic acid receptor 6 antibody, MGC 120358 antibody, MGC120358 antibody, Oleoyl L alpha lysophosphatidic acid receptor antibody, Oleoyl-L-alpha-lysophosphatidic acid receptor antibody, P 2 RY 5 antibody, p2ry5 antibody, P2Y purinoceptor 5 antibody, P2Y5 antibody, Purinergic receptor 5 antibody, purinergic receptor P2Y, G protein coupled, 5 antibody, purinergic receptor p2y5 antibody, RB intron encoded G protein coupled receptor antibody, RB intron encoded G-protein coupled receptor antibody

UniProt: [P43657](#)

Application Details

Application Notes: Recommended dilution: WB:1:1000-1:5000, IHC:1:200-1:500, IF:1:50-1:200,

Restrictions: For Research Use only

Handling

Format: Liquid

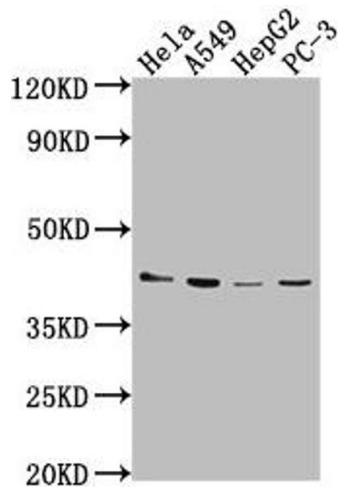
Buffer: Preservative: 0.03 % Proclin 300
Constituents: 50 % Glycerol, 0.01M PBS, pH 7.4

Preservative: ProClin

Precaution of Use: This product contains ProClin: a POISONOUS AND HAZARDOUS SUBSTANCE which should be handled by trained staff only.

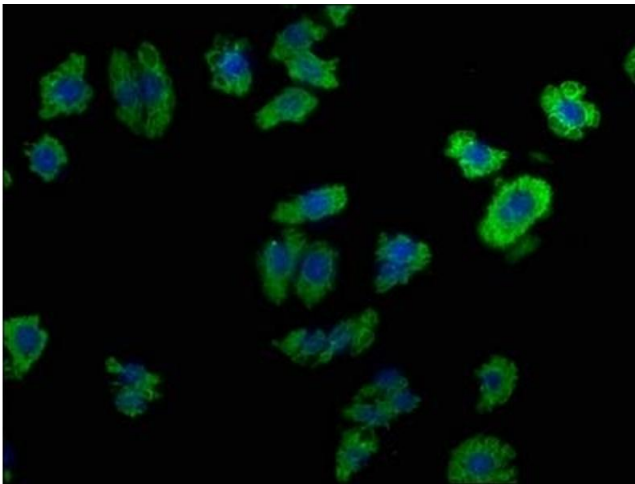
Storage: -20 °C,-80 °C

Storage Comment: Upon receipt, store at -20°C or -80°C. Avoid repeated freeze.



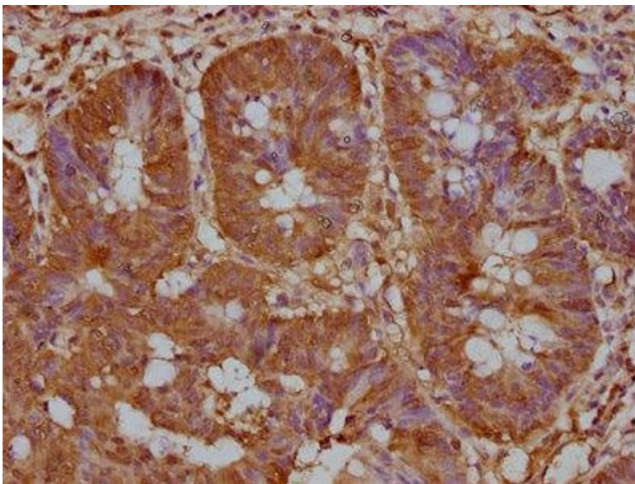
Western Blotting

Image 1. Western Blot Positive WB detected in: HeLa whole cell lysate, A549 whole cell lysate, HepG2 whole cell lysate, PC-3 whole cell lysate All lanes: LPAR6 antibody at 1:2000 Secondary Goat polyclonal to rabbit IgG at 1/50000 dilution Predicted band size: 40 kDa Observed band size: 40 kDa



Immunofluorescence

Image 2. Immunofluorescence staining of HepG2 cells with ABIN7139920 at 1:100, counter-stained with DAPI. The cells were fixed in 4 % formaldehyde, permeabilized using 0.2 % Triton X-100 and blocked in 10 % normal Goat Serum. The cells were then incubated with the antibody overnight at 4 °C. The secondary antibody was Alexa Fluor 488-conjugated AffiniPure Goat Anti-Rabbit IgG(H+L).



Immunohistochemistry

Image 3. IHC image of ABIN7139920 diluted at 1:200 and staining in paraffin-embedded human colon cancer performed on a Leica Bond™ system. After dewaxing and hydration, antigen retrieval was mediated by high pressure in a citrate buffer (pH 6.0). Section was blocked with 10 % normal goat serum 30 min at RT. Then primary antibody (1 % BSA) was incubated at 4 °C overnight. The primary is detected by a biotinylated secondary antibody and visualized using an HRP conjugated SP system.