

Datasheet for ABIN7140044

anti-PIGU antibody (AA 28-47)[Go to Product page](#)**1** Image

Overview

Quantity:	100 µL
Target:	PIGU
Binding Specificity:	AA 28-47
Reactivity:	Human
Host:	Rabbit
Clonality:	Polyclonal
Conjugate:	This PIGU antibody is un-conjugated
Application:	ELISA, Immunohistochemistry (IHC)

Product Details

Immunogen:	Peptide sequence from Human Phosphatidylinositol glycan anchor biosynthesis class U protein (28-47AA)
Isotype:	IgG
Cross-Reactivity:	Human
Purification:	Antigen Affinity Purified

Target Details

Target:	PIGU
Alternative Name:	PIGU (PIGU Products)
Background:	Background: Component of the GPI transamidase complex. May be involved in the recognition

Target Details

of either the GPI attachment signal or the lipid portion of GPI.

Aliases: 5430426F17Rik antibody, BC028278 antibody, Cdc91I1 antibody, Cell division cycle 91 like 1 protein antibody, Cell division cycle protein 91-like 1 antibody, GAB1 antibody, GPI transamidase component PIG-U antibody, GPI transamidase subunit antibody, Phosphatidylinositol glycan anchor biosynthesis class U antibody, Phosphatidylinositol glycan anchor biosynthesis class U protein antibody, Pigu antibody, PIGU_HUMAN antibody, Protein CDC91 like 1 antibody, Protein CDC91-like 1 antibody

UniProt: [Q9H490](#)

Pathways: [Inositol Metabolic Process](#)

Application Details

Application Notes: Recommended dilution: IHC:1:20-1:200,

Restrictions: For Research Use only

Handling

Format: Liquid

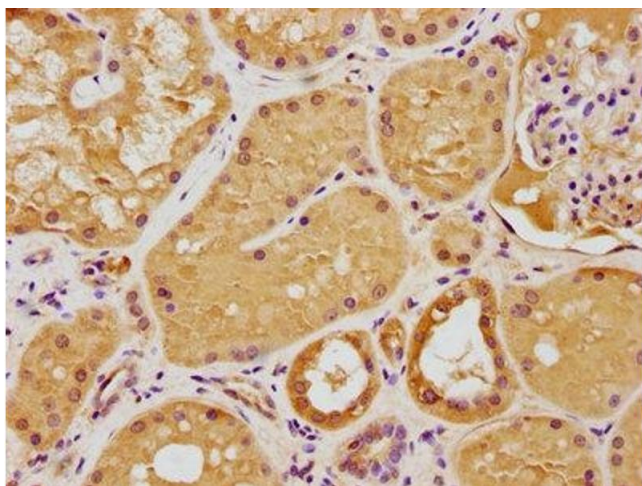
Buffer: Preservative: 0.03 % Proclin 300
Constituents: 50 % Glycerol, 0.01M PBS, pH 7.4

Preservative: ProClin

Precaution of Use: This product contains ProClin: a POISONOUS AND HAZARDOUS SUBSTANCE which should be handled by trained staff only.

Storage: -20 °C,-80 °C

Storage Comment: Upon receipt, store at -20°C or -80°C. Avoid repeated freeze.



Immunohistochemistry

Image 1. IHC image of ABIN7140044 diluted at 1:100 and staining in paraffin-embedded human kidney tissue performed on a Leica Bond™ system. After dewaxing and hydration, antigen retrieval was mediated by high pressure in a citrate buffer (pH 6.0). Section was blocked with 10 % normal goat serum 30 min at RT. Then primary antibody (1 % BSA) was incubated at 4 °C overnight. The primary is detected by a biotinylated secondary antibody and visualized using an HRP conjugated SP system.