

Datasheet for ABIN7140048  
**anti-LPPR1 antibody (AA 51-66)**[Go to Product page](#)

## 1 Image

## Overview

Quantity:	100 µL
Target:	LPPR1
Binding Specificity:	AA 51-66
Reactivity:	Human
Host:	Rabbit
Clonality:	Polyclonal
Conjugate:	This LPPR1 antibody is un-conjugated
Application:	ELISA, Immunofluorescence (IF)

## Product Details

Immunogen:	Peptide sequence from Human Phospholipid phosphatase-related protein type 1 protein (51-66AA)
Isotype:	IgG
Cross-Reactivity:	Human
Purification:	>95%, Protein G purified

## Target Details

Target:	LPPR1
Alternative Name:	PLPPR1 ( <a href="#">LPPR1 Products</a> )
Background:	Background: integral component of plasma membrane, nucleoplasm, lipid phosphatase activity,

## Target Details

phosphatidate phosphatase activity, phospholipid dephosphorylation, phospholipid metabolic process, signal transduction

Aliases: PLPPR1 antibody, LPPR1 antibody, PRG3 antibody, Phospholipid phosphatase-related protein type 1 antibody, Lipid phosphate phosphatase-related protein type 1 antibody, Plasticity-related gene 3 protein antibody, PRG-3 antibody

UniProt: [Q8TBJ4](#)

## Application Details

Application Notes: Recommended dilution: IF:1:100-1:500,

Restrictions: For Research Use only

## Handling

Format: Liquid

Buffer: Preservative: 0.03 % Proclin 300  
Constituents: 50 % Glycerol, 0.01M PBS, PH 7.4

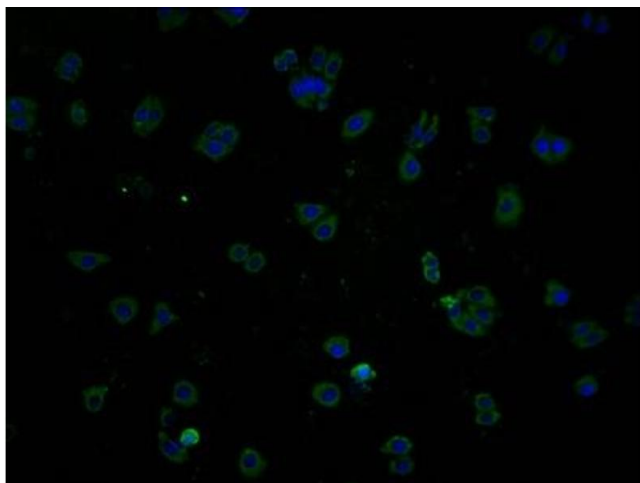
Preservative: ProClin

Precaution of Use: This product contains ProClin: a POISONOUS AND HAZARDOUS SUBSTANCE which should be handled by trained staff only.

Storage: -20 °C,-80 °C

Storage Comment: Upon receipt, store at -20°C or -80°C. Avoid repeated freeze.

## Images



### Immunofluorescence

**Image 1.** Immunofluorescence staining of HepG2 cells with ABIN7140048 at 1:100, counter-stained with DAPI. The cells were fixed in 4 % formaldehyde and blocked in 10 % normal Goat Serum. The cells were then incubated with the antibody overnight at 4 °C. The secondary antibody was Alexa Fluor 488-conjugated AffiniPure Goat Anti-Rabbit IgG(H+L).