

Datasheet for ABIN7140064
anti-PRICKLE3 antibody (AA 9-24)[Go to Product page](#)

2 Images

Overview

Quantity:	100 µL
Target:	PRICKLE3
Binding Specificity:	AA 9-24
Reactivity:	Human
Host:	Rabbit
Clonality:	Polyclonal
Conjugate:	This PRICKLE3 antibody is un-conjugated
Application:	ELISA, Western Blotting (WB), Immunohistochemistry (IHC)

Product Details

Immunogen:	Peptide sequence from Human Prickle-like protein 3 protein (9-24AA)
Isotype:	IgG
Cross-Reactivity:	Human
Purification:	Antigen Affinity Purified

Target Details

Target:	PRICKLE3
Alternative Name:	PRICKLE3 (PRICKLE3 Products)
Background:	Background: Involved in the planar cell polarity (PCP) pathway that is essential for the polarization of epithelial cells during morphogenetic processes, including gastrulation and

Target Details

neurulation (By similarity). PCP is maintained by two molecular modules, the global and the core modules, PRICKLE3 being part of the core module (By similarity). Distinct complexes of the core module segregate to opposite sides of the cell, where they interact with the opposite complex in the neighboring cell at or near the adherents junctions (By similarity). Involved in the organization of the basal body (By similarity). Involved in cilia growth and positioning (By similarity).

Aliases: PRICKLE3 antibody, LMO6Prickle planar cell polarity protein 3 antibody, LIM domain only protein 6 antibody, LMO-6 antibody, Prickle-like protein 3 antibody, Pk3 antibody, Triple LIM domain protein 6 antibody

UniProt: [O43900](#)

Application Details

Application Notes: Recommended dilution: WB:1:1000-1:5000, IHC:1:20-1:200,

Restrictions: For Research Use only

Handling

Format: Liquid

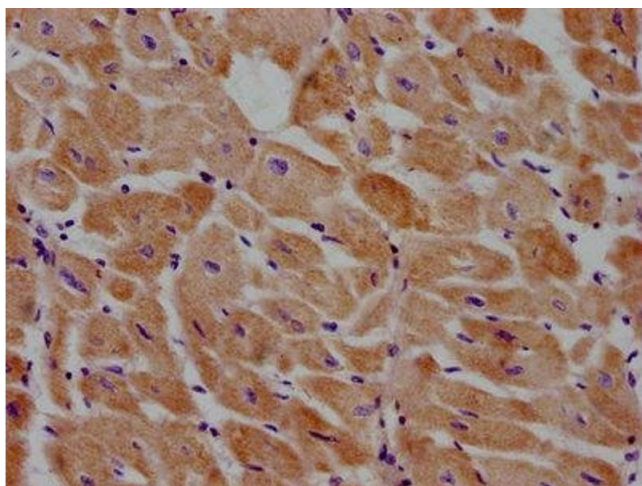
Buffer: Preservative: 0.03 % Proclin 300
Constituents: 50 % Glycerol, 0.01M PBS, pH 7.4

Preservative: ProClin

Precaution of Use: This product contains ProClin: a POISONOUS AND HAZARDOUS SUBSTANCE which should be handled by trained staff only.

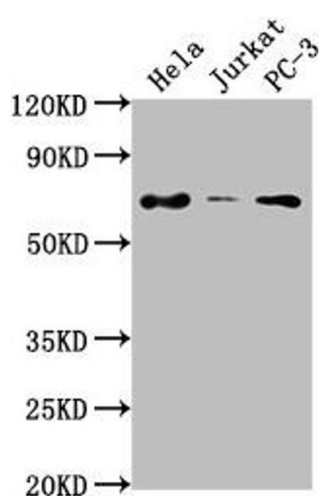
Storage: -20 °C,-80 °C

Storage Comment: Upon receipt, store at -20°C or -80°C. Avoid repeated freeze.



Immunohistochemistry

Image 1. IHC image of ABIN7140064 diluted at 1:100 and staining in paraffin-embedded human heart tissue performed on a Leica Bond™ system. After dewaxing and hydration, antigen retrieval was mediated by high pressure in a citrate buffer (pH 6.0). Section was blocked with 10% normal goat serum 30min at RT. Then primary antibody (1% BSA) was incubated at 4°C overnight. The primary is detected by a biotinylated secondary antibody and visualized using an HRP conjugated SP system.



Western Blotting

Image 2. Western Blot Positive WB detected in: HeLa whole cell lysate, Jurkat whole cell lysate, PC-3 whole cell lysate All lanes: PRICKLE3 antibody at 1:2000 Secondary Goat polyclonal to rabbit IgG at 1/50000 dilution Predicted band size: 69, 60 kDa Observed band size: 69 kDa