

Datasheet for ABIN7140070
anti-LRP1 antibody (AA 3924-3942)[Go to Product page](#)

2 Images

Overview

Quantity:	100 µL
Target:	LRP1
Binding Specificity:	AA 3924-3942
Reactivity:	Human
Host:	Rabbit
Clonality:	Polyclonal
Conjugate:	This LRP1 antibody is un-conjugated
Application:	Immunohistochemistry (IHC), ELISA, Immunofluorescence (IF)

Product Details

Immunogen:	Peptide sequence from Human Prolow-density lipoprotein receptor-related protein 1 protein (3924-3942AA)
Isotype:	IgG
Cross-Reactivity:	Human
Purification:	>95%, Protein G purified

Target Details

Target:	LRP1
Alternative Name:	LRP1 (LRP1 Products)
Background:	Background: Endocytic receptor involved in endocytosis and in phagocytosis of apoptotic cells.

Target Details

Required for early embryonic development. Involved in cellular lipid homeostasis. Involved in the plasma clearance of chylomicron remnants and activated LRPAP1 (alpha 2-macroglobulin), as well as the local metabolism of complexes between plasminogen activators and their endogenous inhibitors. May modulate cellular events, such as APP metabolism, kinase-dependent intracellular signaling, neuronal calcium signaling as well as neurotransmission (PubMed:11907044, PubMed:12888553, PubMed:12713657). Acts as an alpha-2-macroglobulin receptor (PubMed:26142438).

Aliases: A2MR antibody, Alpha 2 macroglobulin receptor antibody, alpha 2MR antibody, Alpha-2-macroglobulin receptor antibody, APOER antibody, Apolipoprotein E receptor antibody, APR antibody, CD 91 antibody, CD91 antibody, CD91 antigen antibody, IGFBP3R antibody, LDL receptor related protein 1 antibody, Low density lipoprotein receptor related protein 1 antibody, Low density lipoprotein related protein 1 antibody, Low-density lipoprotein receptor-related protein 1 intracellular domain antibody, LRP 1 antibody, LRP 515 antibody, LRP 85 antibody, LRP antibody, LRP ICD antibody, LRP-1 antibody, LRP-515 antibody, LRP-85 antibody, Lrp1 antibody, LRP1 protein antibody, LRP1_HUMAN antibody, LRP1A antibody, LRP515 antibody, LRP85 antibody, LRPICD antibody, MGC88725 antibody, Prolow density lipoprotein receptor related protein 1 antibody, TbetaR V/LRP 1/IGFBP 3 receptor antibody, TbetaRV/LRP1/IGFBP3 receptor antibody, TGFBR 5 antibody, TGFBR5 antibody, Type V tgf beta receptor antibody

UniProt: [Q07954](#)

Pathways: [Smooth Muscle Cell Migration](#), [Platelet-derived growth Factor Receptor Signaling](#)

Application Details

Application Notes: Recommended dilution: IHC:1:200-1:500, IF:1:50-1:200,

Restrictions: For Research Use only

Handling

Format: Liquid

Buffer: Preservative: 0.03 % Proclin 300
Constituents: 50 % Glycerol, 0.01M PBS, pH 7.4

Preservative: ProClin

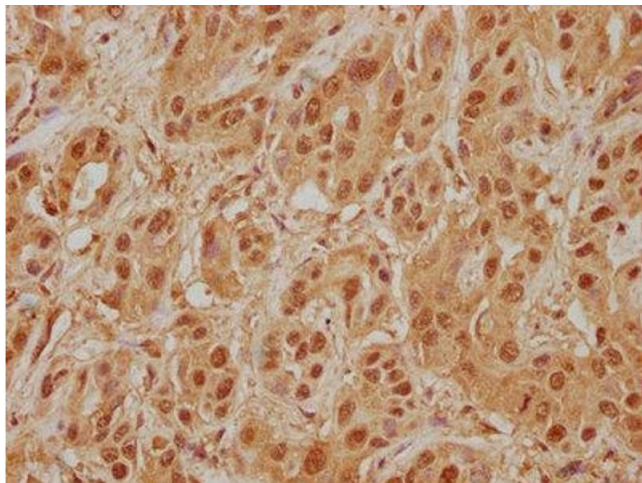
Precaution of Use: This product contains ProClin: a POISONOUS AND HAZARDOUS SUBSTANCE which should be handled by trained staff only.

Handling

Storage: -20 °C, -80 °C

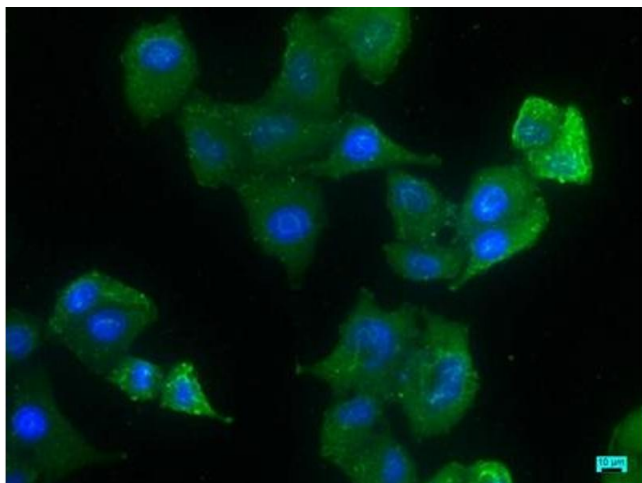
Storage Comment: Upon receipt, store at -20°C or -80°C. Avoid repeated freeze.

Images



Immunohistochemistry

Image 1. IHC image of ABIN7140070 diluted at 1:400 and staining in paraffin-embedded human liver cancer performed on a Leica Bond™ system. After dewaxing and hydration, antigen retrieval was mediated by high pressure in a citrate buffer (pH 6.0). Section was blocked with 10 % normal goat serum 30 min at RT. Then primary antibody (1 % BSA) was incubated at 4 °C overnight. The primary is detected by a biotinylated secondary antibody and visualized using an HRP conjugated SP system.



Immunofluorescence

Image 2. Immunofluorescence staining of HeLa cells with ABIN7140070 at 1:133, counter-stained with DAPI. The cells were fixed in 4 % formaldehyde, permeabilized using 0.2 % Triton X-100 and blocked in 10 % normal Goat Serum. The cells were then incubated with the antibody overnight at 4 °C. The secondary antibody was Alexa Fluor 488-conjugated AffiniPure Goat Anti-Rabbit IgG(H+L).