

Datasheet for ABIN7140074  
**anti-GPR37 antibody (AA 114-133)**[Go to Product page](#)

## 3 Images

## Overview

Quantity:	100 µL
Target:	GPR37
Binding Specificity:	AA 114-133
Reactivity:	Human
Host:	Rabbit
Clonality:	Polyclonal
Conjugate:	This GPR37 antibody is un-conjugated
Application:	Western Blotting (WB), ELISA, Immunohistochemistry (IHC), Immunofluorescence (IF)

## Product Details

Immunogen:	Peptide sequence from Human Prosaposin receptor GPR37 protein (114-133AA)
Isotype:	IgG
Cross-Reactivity:	Human
Purification:	>95%, Protein G purified

## Target Details

Target:	GPR37
Alternative Name:	GPR37 ( <a href="#">GPR37 Products</a> )
Background:	Background: Receptor for the neuroprotective and glioprotective factor prosaposin. Ligand binding induces endocytosis, followed by an ERK phosphorylation cascade.

## Target Details

Aliases: EDNRBL antibody, Endothelin B receptor like protein 1 antibody, Endothelin B receptor-like protein 1 antibody, Endothelin receptor type B like antibody, ETBR LP 1 antibody, ETBR-LP-1 antibody, ETBRLP1 antibody, G protein coupled receptor 37 antibody, G protein coupled receptor 37 endothelin receptor type B like antibody, Gpr37 antibody, GPR37\_HUMAN antibody, hET(B)R LP antibody, hET(B)RLP antibody, PAELR antibody, Parkin associated endothelin receptor like receptor antibody, Parkin-associated endothelin receptor-like receptor antibody, Probable G protein coupled receptor 37 antibody, Probable G-protein coupled receptor 37 antibody

UniProt: [O15354](#)

## Application Details

Application Notes: Recommended dilution: WB:1:1000-1:5000, IHC:1:500-1:1000, IF:1:200-1:500,

Restrictions: For Research Use only

## Handling

Format: Liquid

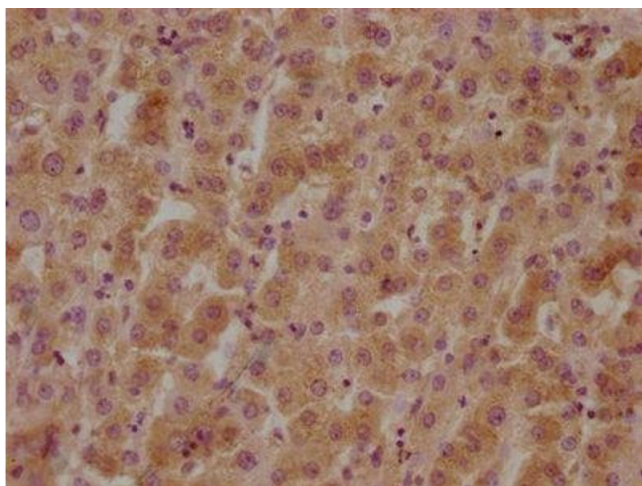
Buffer: Preservative: 0.03 % Proclin 300  
Constituents: 50 % Glycerol, 0.01M PBS, pH 7.4

Preservative: ProClin

Precaution of Use: This product contains ProClin: a POISONOUS AND HAZARDOUS SUBSTANCE which should be handled by trained staff only.

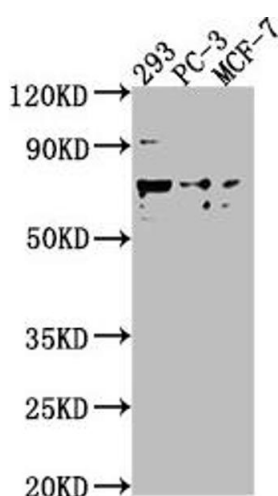
Storage: -20 °C,-80 °C

Storage Comment: Upon receipt, store at -20°C or -80°C. Avoid repeated freeze.



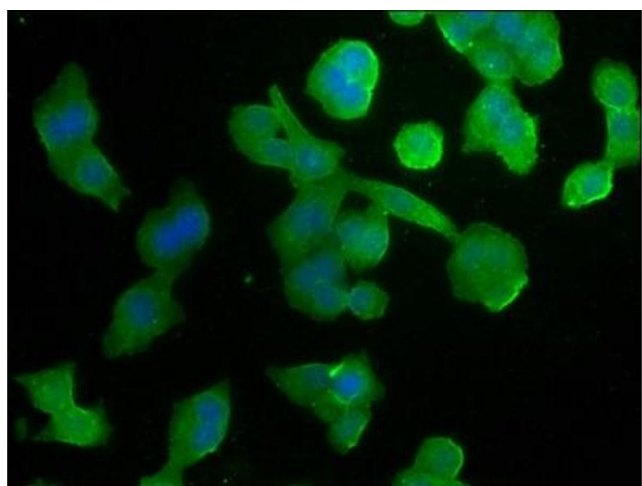
### Immunohistochemistry

**Image 1.** IHC image of ABIN7140074 diluted at 1:800 and staining in paraffin-embedded human liver tissue performed on a Leica Bond™ system. After dewaxing and hydration, antigen retrieval was mediated by high pressure in a citrate buffer (pH 6.0). Section was blocked with 10 % normal goat serum 30 min at RT. Then primary antibody (1 % BSA) was incubated at 4 °C overnight. The primary is detected by a biotinylated secondary antibody and visualized using an HRP conjugated SP system.



### Western Blotting

**Image 2.** Western Blot Positive WB detected in: 293 whole cell lysate, PC-3 whole cell lysate, MCF-7 whole cell lysate. All lanes: GPR37 antibody at 1:2000. Secondary Goat polyclonal to rabbit IgG at 1/50000 dilution. Predicted band size: 68 kDa. Observed band size: 68 kDa.



### Immunofluorescence

**Image 3.** Immunofluorescence staining of PC-3 cells with ABIN7140074 at 1:266, counter-stained with DAPI. The cells were fixed in 4 % formaldehyde, permeabilized using 0.2 % Triton X-100 and blocked in 10 % normal Goat Serum. The cells were then incubated with the antibody overnight at 4 °C. The secondary antibody was Alexa Fluor 488-conjugated AffiniPure Goat Anti-Rabbit IgG(H+L).