



[Go to Product page](#)

Datasheet for ABIN7140082
anti-WWC3 antibody (AA 65-85)

3 Images

Overview

Quantity:	100 µL
Target:	WWC3
Binding Specificity:	AA 65-85
Reactivity:	Human
Host:	Rabbit
Clonality:	Polyclonal
Conjugate:	This WWC3 antibody is un-conjugated
Application:	Western Blotting (WB), Immunohistochemistry (IHC), ELISA, Immunofluorescence (IF)

Product Details

Immunogen:	Peptide sequence from Human Protein WWC3 protein (65-85AA)
Isotype:	IgG
Cross-Reactivity:	Human
Purification:	Antigen Affinity Purified

Target Details

Target:	WWC3
Alternative Name:	WWC3 (WWC3 Products)
Background:	Background: cytosol, kinase binding, protein complex scaffold, negative regulation of hippo signaling, negative regulation of organ growth, negative regulation of transcription from RNA

Target Details

polymerase II promoter

Aliases: WWC3 antibody, KIAA1280 antibody, Protein WWC3 antibody

UniProt: [Q9ULE0](#)

Application Details

Application Notes: Recommended dilution: WB:1:500-1:2000, IHC:1:20-1:200, IF:1:50-1:200,

Restrictions: For Research Use only

Handling

Format: Liquid

Buffer: Preservative: 0.03 % Proclin 300
Constituents: 50 % Glycerol, 0.01M PBS, pH 7.4

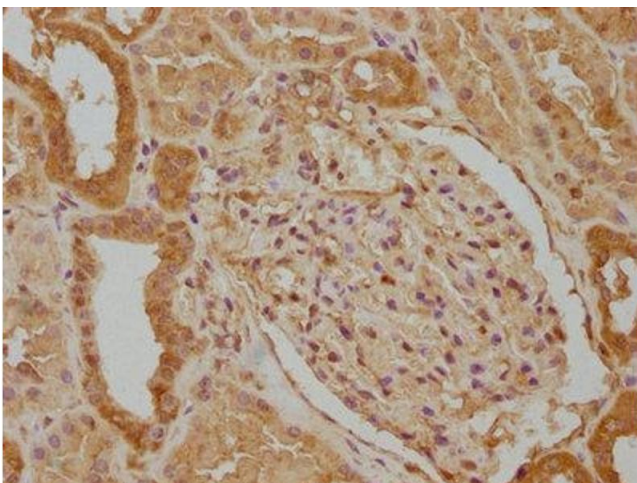
Preservative: ProClin

Precaution of Use: This product contains ProClin: a POISONOUS AND HAZARDOUS SUBSTANCE which should be handled by trained staff only.

Storage: -20 °C,-80 °C

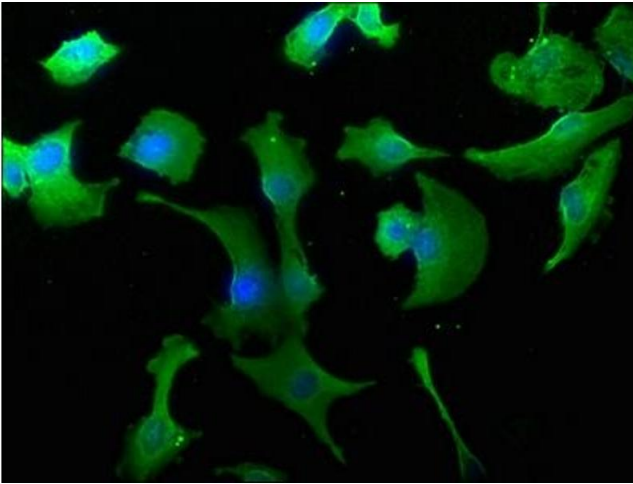
Storage Comment: Upon receipt, store at -20°C or -80°C. Avoid repeated freeze.

Images



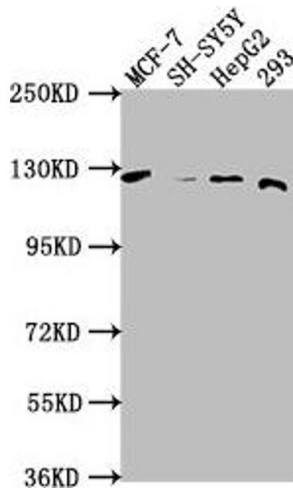
Immunohistochemistry

Image 1. IHC image of ABIN7140082 diluted at 1:100 and staining in paraffin-embedded human kidney tissue performed on a Leica Bond™ system. After dewaxing and hydration, antigen retrieval was mediated by high pressure in a citrate buffer (pH 6.0). Section was blocked with 10 % normal goat serum 30 min at RT. Then primary antibody (1 % BSA) was incubated at 4 °C overnight. The primary is detected by a biotinylated secondary antibody and visualized using an HRP conjugated SP system.



Immunofluorescence

Image 2. Immunofluorescence staining of U251 cells with ABIN7140082 at 1:50, counter-stained with DAPI. The cells were fixed in 4 % formaldehyde, permeabilized using 0.2 % Triton X-100 and blocked in 10 % normal Goat Serum. The cells were then incubated with the antibody overnight at 4 °C. The secondary antibody was Alexa Fluor 488-conjugated AffiniPure Goat Anti-Rabbit IgG(H+L).



Western Blotting

Image 3. Western Blot Positive WB detected in: MCF-7 whole cell lysate, SH-SY5Y whole cell lysate, HepG2 whole cell lysate, 293 whole cell lysate All lanes: WWC3 antibody at 1:1000 Secondary Goat polyclonal to rabbit IgG at 1/50000 dilution Predicted band size: 123, 66 kDa Observed band size: 123 kDa