



Datasheet for ABIN7140090
anti-DVL-1 antibody (AA 152-173)



[Go to Product page](#)

1 Image

Overview

Quantity:	100 µL
Target:	DVL-1 (DVL1P1)
Binding Specificity:	AA 152-173
Reactivity:	Human
Host:	Rabbit
Clonality:	Polyclonal
Conjugate:	This DVL-1 antibody is un-conjugated
Application:	Western Blotting (WB), ELISA

Product Details

Immunogen:	Peptide sequence from Human Putative segment polarity protein dishevelled homolog DVL1P1 protein (152-173AA)
Isotype:	IgG
Cross-Reactivity:	Human
Purification:	Antigen Affinity Purified

Target Details

Target:	DVL-1 (DVL1P1)
Alternative Name:	DVL1P1 (DVL1P1 Products)
Background:	Background: May play a role in the signal transduction pathway mediated by multiple Wnt

Target Details

genes.

Aliases: DVL1P1 antibody, DVL antibody, DVL1 antibody, DVL1L1Putative segment polarity protein dishevelled homolog DVL1P1 antibody, DSH homolog 1-like antibody, Segment polarity protein dishevelled homolog DVL-1-like antibody, Dishevelled-1-like antibody

UniProt: [P54792](#)

Application Details

Application Notes: Recommended dilution: WB:1:500-1:2000,

Restrictions: For Research Use only

Handling

Format: Liquid

Buffer: Preservative: 0.03 % Proclin 300
Constituents: 50 % Glycerol, 0.01M PBS, pH 7.4

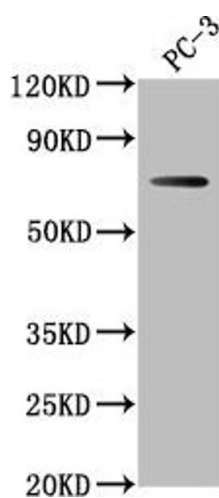
Preservative: ProClin

Precaution of Use: This product contains ProClin: a POISONOUS AND HAZARDOUS SUBSTANCE which should be handled by trained staff only.

Storage: -20 °C,-80 °C

Storage Comment: Upon receipt, store at -20°C or -80°C. Avoid repeated freeze.

Images



Western Blotting

Image 1. Western Blot Positive WB detected in: PC-3 whole cell lysate All lanes: DVL1P1 antibody at 1:1000 Secondary Goat polyclonal to rabbit IgG at 1/50000 dilution Predicted band size: 74, 73 kDa Observed band size: 74 kDa