



[Go to Product page](#)

Datasheet for ABIN7140098  
**anti-GRF2 antibody (AA 22-40)**

1 Image

### Overview

Quantity:	100 µL
Target:	GRF2 (RAPGEF1)
Binding Specificity:	AA 22-40
Reactivity:	Human
Host:	Rabbit
Clonality:	Polyclonal
Conjugate:	This GRF2 antibody is un-conjugated
Application:	Western Blotting (WB), ELISA

### Product Details

Immunogen:	Peptide sequence from Human Rap guanine nucleotide exchange factor 1 protein (22-40AA)
Isotype:	IgG
Cross-Reactivity:	Human
Purification:	>95%, Protein G purified

### Target Details

Target:	GRF2 (RAPGEF1)
Alternative Name:	RAPGEF1 ( <a href="#">RAPGEF1 Products</a> )
Background:	Background: Guanine nucleotide-releasing protein that binds to SH3 domain of CRK and GRB2/ASH. Transduces signals from CRK to activate RAS. Plays a role in the establishment of

## Target Details

---

basal endothelial barrier function. Plays a role in nerve growth factor (NGF)-induced sustained activation of Rap1 and neurite outgrowth.

Aliases: C3G antibody, C3G protein antibody, CRK SH3 binding GNRP antibody, CRK SH3-binding GNRP antibody, DKFZp781P1719 antibody, GRF 2 antibody, GRF2 antibody, Guanine nucleotide releasing factor 2 (specific for crk proto oncogene) antibody, Guanine nucleotide releasing factor 2 antibody, Guanine nucleotide-releasing factor 2 antibody, OTTHUMP00000064558 antibody, Protein C3G antibody, Rap guanine nucleotide exchange factor (GEF) 1 antibody, Rap guanine nucleotide exchange factor 1 antibody, RAPGEF 1 antibody, RAPGEF1 antibody, RPGF1\_HUMAN antibody

---

UniProt: [Q13905](#)

Pathways: [Interferon-gamma Pathway](#), [Neurotrophin Signaling Pathway](#), [Platelet-derived growth Factor Receptor Signaling](#), [Signaling of Hepatocyte Growth Factor Receptor](#)

## Application Details

---

Application Notes: Recommended dilution: WB:1:1000-1:5000,

Restrictions: For Research Use only

## Handling

---

Format: Liquid

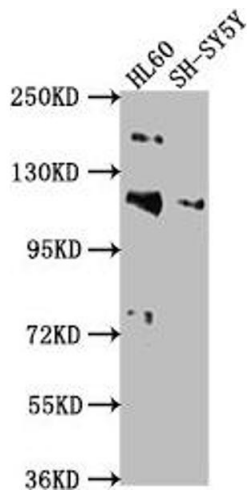
Buffer: Preservative: 0.03 % Proclin 300  
Constituents: 50 % Glycerol, 0.01M PBS, pH 7.4

Preservative: ProClin

Precaution of Use: This product contains ProClin: a POISONOUS AND HAZARDOUS SUBSTANCE which should be handled by trained staff only.

Storage: -20 °C,-80 °C

Storage Comment: Upon receipt, store at -20°C or -80°C. Avoid repeated freeze.



### Western Blotting

**Image 1.** Western Blot Positive WB detected in: HL60 whole cell lysate, SH-SY5Y whole cell lysate All lanes: RAPGEF1 antibody at 1:2000 Secondary Goat polyclonal to rabbit IgG at 1/50000 dilution Predicted band size: 121, 117, 123 kDa Observed band size: 121 kDa