



[Go to Product page](#)

Datasheet for ABIN7140114

anti-RTN4RL2 antibody (AA 355-372)

3 Images

Overview

| | |
|----------------------|-----------------------------------------------------------------------------------|
| Quantity: | 100 µL |
| Target: | RTN4RL2 |
| Binding Specificity: | AA 355-372 |
| Reactivity: | Human |
| Host: | Rabbit |
| Clonality: | Polyclonal |
| Conjugate: | This RTN4RL2 antibody is un-conjugated |
| Application: | Western Blotting (WB), ELISA, Immunohistochemistry (IHC), Immunofluorescence (IF) |

Product Details

| | |
|-------------------|-----------------------------------------------------------------------------|
| Immunogen: | Peptide sequence from Human Reticulon-4 receptor-like 2 protein (355-372AA) |
| Isotype: | IgG |
| Cross-Reactivity: | Human |
| Purification: | Antigen Affinity Purified |

Target Details

| | |
|-------------------|-------------------------------------------------------------------------------------------------------------------------------------------------------------------------------------------|
| Target: | RTN4RL2 |
| Alternative Name: | RTN4RL2 (RTN4RL2 Products) |
| Background: | Background: Cell surface receptor that plays a functionally redundant role in the inhibition of neurite outgrowth mediated by MAG (By similarity). Plays a functionally redundant role in |

Target Details

postnatal brain development. Contributes to normal axon migration across the brain midline and normal formation of the corpus callosum. Does not seem to play a significant role in regulating axon regeneration in the adult central nervous system. Protects motoneurons against apoptosis, protection against apoptosis is probably mediated by MAG (By similarity). Like other family members, plays a role in restricting the number dendritic spines and the number of synapses that are formed during brain development (PubMed: 22325200). Signaling mediates activation of Rho and downstream reorganization of the actin cytoskeleton (PubMed: 22325200).

Aliases: RTN4RL2 antibody, NGRH1 antibody, NGRL3 antibody, Reticulon-4 receptor-like 2 antibody, Nogo receptor-like 3 antibody, Nogo-66 receptor homolog 1 antibody, Nogo-66 receptor-related protein 2 antibody, NgR2 antibody

UniProt: [Q86UN3](#)

Application Details

Application Notes: Recommended dilution: WB:1:1000-1:5000, IHC:1:20-1:200, IF:1:50-1:200,

Restrictions: For Research Use only

Handling

Format: Liquid

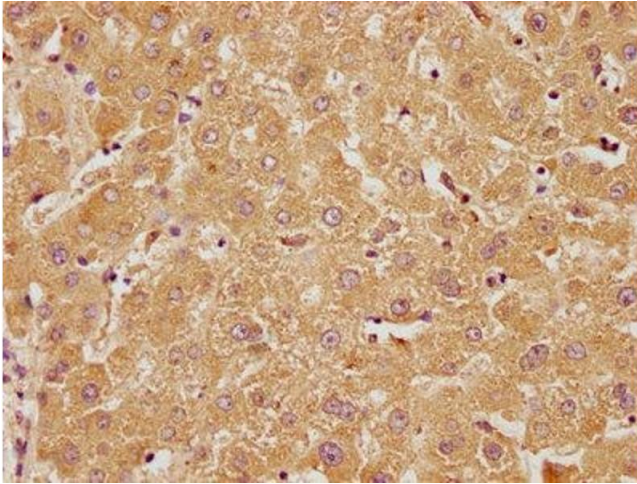
Buffer: Preservative: 0.03 % Proclin 300
Constituents: 50 % Glycerol, 0.01M PBS, pH 7.4

Preservative: ProClin

Precaution of Use: This product contains ProClin: a POISONOUS AND HAZARDOUS SUBSTANCE which should be handled by trained staff only.

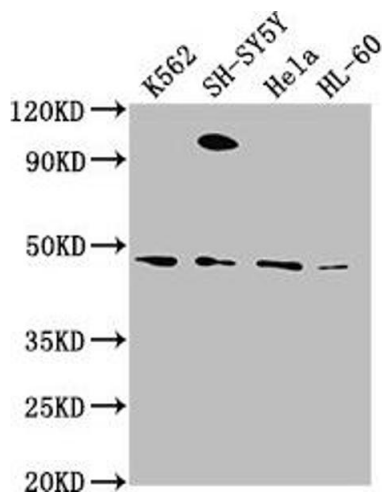
Storage: -20 °C,-80 °C

Storage Comment: Upon receipt, store at -20°C or -80°C. Avoid repeated freeze.



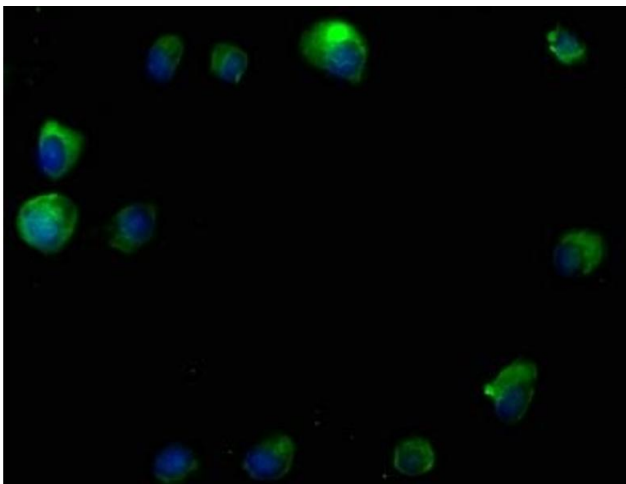
Immunohistochemistry

Image 1. IHC image of ABIN7140114 diluted at 1:100 and staining in paraffin-embedded human liver tissue performed on a Leica Bond™ system. After dewaxing and hydration, antigen retrieval was mediated by high pressure in a citrate buffer (pH 6.0). Section was blocked with 10 % normal goat serum 30 min at RT. Then primary antibody (1 % BSA) was incubated at 4 °C overnight. The primary is detected by a biotinylated secondary antibody and visualized using an HRP conjugated SP system.



Western Blotting

Image 2. Western Blot Positive WB detected in: K562 whole cell lysate, SH-SY5Y whole cell lysate, HeLa whole cell lysate, HL-60 whole cell lysate All lanes: RTN4RL2 antibody at 1:2000 Secondary Goat polyclonal to rabbit IgG at 1/50000 dilution Predicted band size: 47, 22 kDa Observed band size: 47 kDa



Immunofluorescence

Image 3. Immunofluorescence staining of MCF-7 cells with ABIN7140114 at 1:50, counter-stained with DAPI. The cells were fixed in 4 % formaldehyde, permeabilized using 0.2 % Triton X-100 and blocked in 10 % normal Goat Serum. The cells were then incubated with the antibody overnight at 4 °C. The secondary antibody was Alexa Fluor 488-conjugated AffiniPure Goat Anti-Rabbit IgG(H+L).