

Datasheet for ABIN7140139  
**anti-SH2D3A antibody (AA 211-231)**[Go to Product page](#)

## 1 Image

## Overview

Quantity:	100 µL
Target:	SH2D3A
Binding Specificity:	AA 211-231
Reactivity:	Human
Host:	Rabbit
Clonality:	Polyclonal
Conjugate:	This SH2D3A antibody is un-conjugated
Application:	ELISA, Immunohistochemistry (IHC)

## Product Details

Immunogen:	Peptide sequence from Human SH2 domain-containing protein 3A protein (211-231AA)
Isotype:	IgG
Cross-Reactivity:	Human
Purification:	>95%, Protein G purified

## Target Details

Target:	SH2D3A
Alternative Name:	SH2D3A ( <a href="#">SH2D3A Products</a> )
Background:	Background: May play a role in JNK activation. Aliases: Novel SH2 containing protein 1 antibody, Novel SH2-containing protein 1 antibody,

## Target Details

NSP1 antibody, SH2 domain containing 3A antibody, SH2 domain containing protein 3A antibody, SH2 domain-containing protein 3A antibody, SH23A\_HUMAN antibody, SH2D3A antibody

UniProt: [Q9BRG2](#)

## Application Details

Application Notes: Recommended dilution: IHC:1:200-1:500,

Restrictions: For Research Use only

## Handling

Format: Liquid

Buffer: Preservative: 0.03 % Proclin 300  
Constituents: 50 % Glycerol, 0.01M PBS, pH 7.4

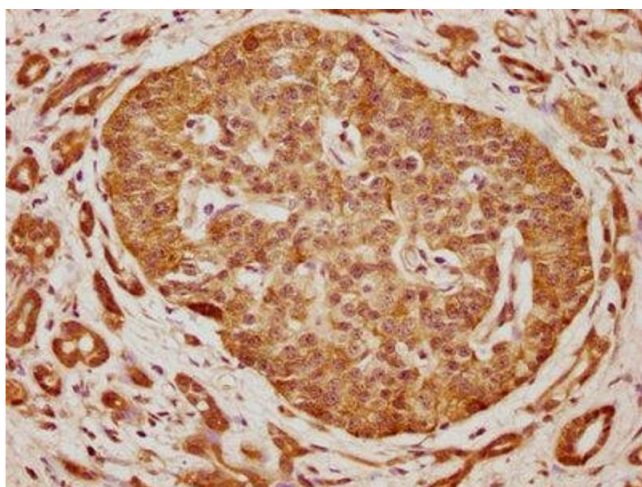
Preservative: ProClin

Precaution of Use: This product contains ProClin: a POISONOUS AND HAZARDOUS SUBSTANCE which should be handled by trained staff only.

Storage: -20 °C,-80 °C

Storage Comment: Upon receipt, store at -20°C or -80°C. Avoid repeated freeze.

## Images



### Immunohistochemistry

**Image 1.** IHC image of ABIN7140139 diluted at 1:300 and staining in paraffin-embedded human pancreatic cancer performed on a Leica Bond™ system. After dewaxing and hydration, antigen retrieval was mediated by high pressure in a citrate buffer (pH 6.0). Section was blocked with 10% normal goat serum 30min at RT. Then primary antibody (1% BSA) was incubated at 4°C overnight. The primary is detected by a biotinylated secondary antibody and visualized using an HRP conjugated SP system.