

Datasheet for ABIN7140147
anti-SKOR2 antibody (AA 19-36)[Go to Product page](#)

3 Images

Overview

Quantity:	100 µL
Target:	SKOR2
Binding Specificity:	AA 19-36
Reactivity:	Human
Host:	Rabbit
Clonality:	Polyclonal
Conjugate:	This SKOR2 antibody is un-conjugated
Application:	ELISA, Immunohistochemistry (IHC), Immunofluorescence (IF)

Product Details

Immunogen:	Peptide sequence from Human SKI family transcriptional corepressor 2 protein (19-36AA)
Isotype:	IgG
Cross-Reactivity:	Human
Purification:	Antigen Affinity Purified

Target Details

Target:	SKOR2
Alternative Name:	SKOR2 (SKOR2 Products)
Background:	Background: Exhibits transcriptional repressor activity (By similarity). Acts as a TGF-beta antagonist in the nervous system.

Target Details

Aliases: SKOR2 antibody, CORL2 antibody, FUSSEL18 antibody, SKI family transcriptional corepressor 2 antibody, Functional Smad-suppressing element on chromosome 18 antibody, Fussel-18 antibody, LBX1 corepressor 1-like protein antibody, Ladybird homeobox corepressor 1-like protein antibody

UniProt: [Q2VWA4](#)

Application Details

Application Notes: Recommended dilution: IHC:1:20-1:200, IF:1:50-1:200,

Restrictions: For Research Use only

Handling

Format: Liquid

Buffer: Preservative: 0.03 % Proclin 300
Constituents: 50 % Glycerol, 0.01M PBS, pH 7.4

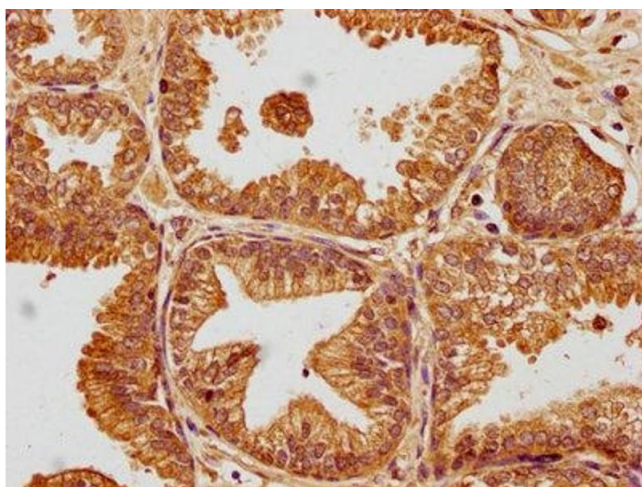
Preservative: ProClin

Precaution of Use: This product contains ProClin: a POISONOUS AND HAZARDOUS SUBSTANCE which should be handled by trained staff only.

Storage: -20 °C,-80 °C

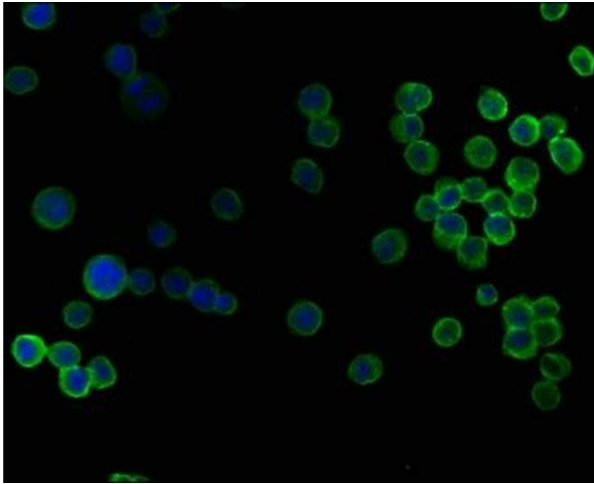
Storage Comment: Upon receipt, store at -20°C or -80°C. Avoid repeated freeze.

Images



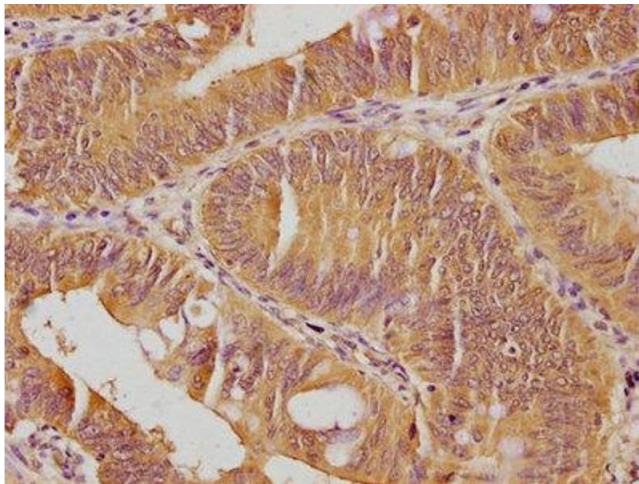
Immunohistochemistry

Image 1. IHC image of ABIN7140147 diluted at 1:100 and staining in paraffin-embedded human prostate cancer performed on a Leica Bond™ system. After dewaxing and hydration, antigen retrieval was mediated by high pressure in a citrate buffer (pH 6.0). Section was blocked with 10 % normal goat serum 30 min at RT. Then primary antibody (1 % BSA) was incubated at 4 °C overnight. The primary is detected by a biotinylated secondary antibody and visualized using an HRP conjugated SP system.



Immunofluorescence

Image 2. Immunofluorescence staining of K562 cells with ABIN7140147 at 1:50, counter-stained with DAPI. The cells were fixed in 4 % formaldehyde, permeabilized using 0.2 % Triton X-100 and blocked in 10 % normal Goat Serum. The cells were then incubated with the antibody overnight at 4 °C. The secondary antibody was Alexa Fluor 488-conjugated AffiniPure Goat Anti-Rabbit IgG(H+L).



Immunohistochemistry

Image 3. IHC image of ABIN7140147 diluted at 1:100 and staining in paraffin-embedded human colon cancer performed on a Leica Bond™ system. After dewaxing and hydration, antigen retrieval was mediated by high pressure in a citrate buffer (pH 6.0). Section was blocked with 10 % normal goat serum 30 min at RT. Then primary antibody (1 % BSA) was incubated at 4 °C overnight. The primary is detected by a biotinylated secondary antibody and visualized using an HRP conjugated SP system.