



[Go to Product page](#)

Datasheet for ABIN7140207

## anti-ATP6AP1L antibody (AA 190-209)

### 2 Images

#### Overview

Quantity:	100 µL
Target:	ATP6AP1L
Binding Specificity:	AA 190-209
Reactivity:	Human
Host:	Rabbit
Clonality:	Polyclonal
Conjugate:	This ATP6AP1L antibody is un-conjugated
Application:	ELISA, Immunofluorescence (IF), Immunohistochemistry (IHC)

#### Product Details

Immunogen:	Peptide sequence from Human V-type proton ATPase subunit S1-like protein (190-209AA)
Isotype:	IgG
Cross-Reactivity:	Human
Purification:	Antigen Affinity Purified

#### Target Details

Target:	ATP6AP1L
Alternative Name:	ATP6AP1L ( <a href="#">ATP6AP1L Products</a> )
Background:	ATP6AP1L antibody, V-type proton ATPase subunit S1-like protein antibody, Vacuolar proton pump subunit S1-like protein antibody

## Target Details

---

UniProt: [Q52LC2](#)

## Application Details

---

Application Notes: Recommended dilution: IHC:1:20-1:200, IF:1:50-1:200,

Restrictions: For Research Use only

## Handling

---

Format: Liquid

Buffer: Preservative: 0.03 % Proclin 300  
Constituents: 50 % Glycerol, 0.01M PBS, pH 7.4

Preservative: ProClin

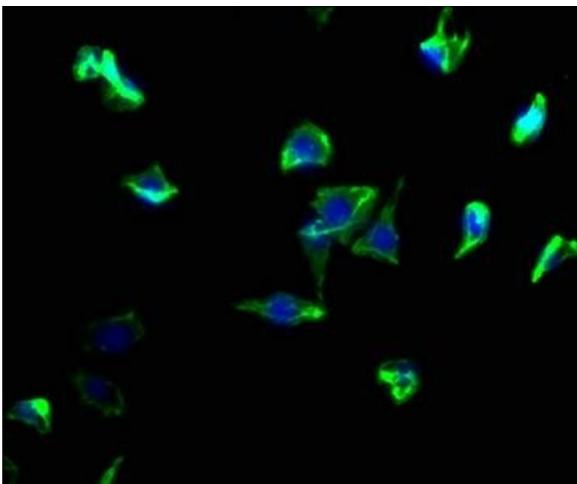
Precaution of Use: This product contains ProClin: a POISONOUS AND HAZARDOUS SUBSTANCE which should be handled by trained staff only.

Storage: -20 °C,-80 °C

Storage Comment: Upon receipt, store at -20°C or -80°C. Avoid repeated freeze.

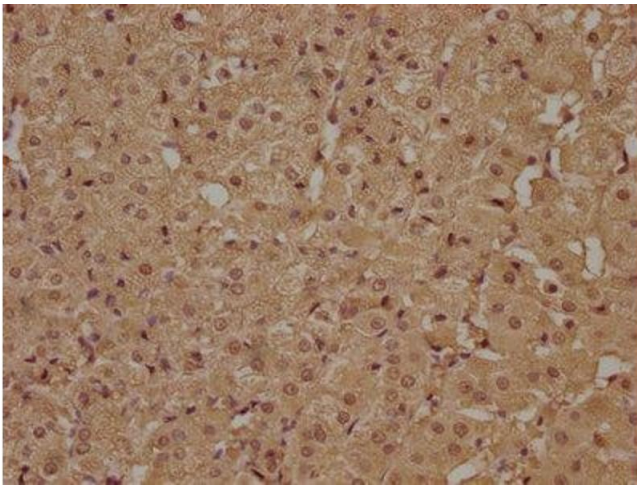
## Images

---



### Immunofluorescence

**Image 1.** Immunofluorescence staining of SH-SY5Y cells with ABIN7140207 at 1:50, counter-stained with DAPI. The cells were fixed in 4 % formaldehyde, permeabilized using 0.2 % Triton X-100 and blocked in 10 % normal Goat Serum. The cells were then incubated with the antibody overnight at 4 °C. The secondary antibody was Alexa Fluor 488-conjugated AffiniPure Goat Anti-Rabbit IgG(H+L).



### Immunohistochemistry

**Image 2.** IHC image of ABIN7140207 diluted at 1:100 and staining in paraffin-embedded human adrenal gland tissue performed on a Leica Bond™ system. After dewaxing and hydration, antigen retrieval was mediated by high pressure in a citrate buffer (pH 6.0). Section was blocked with 10 % normal goat serum 30 min at RT. Then primary antibody (1 % BSA) was incubated at 4 °C overnight. The primary is detected by a biotinylated secondary antibody and visualized using an HRP conjugated SP system.