

Datasheet for ABIN7140243
anti-GLI2 antibody (AA 2-20)[Go to Product page](#)

2 Images

Overview

| | |
|----------------------|--|
| Quantity: | 100 µL |
| Target: | GLI2 |
| Binding Specificity: | AA 2-20 |
| Reactivity: | Human |
| Host: | Rabbit |
| Clonality: | Polyclonal |
| Conjugate: | This GLI2 antibody is un-conjugated |
| Application: | Western Blotting (WB), ELISA, Immunohistochemistry (IHC) |

Product Details

| | |
|-------------------|---|
| Immunogen: | Peptide sequence from Human Zinc finger protein GLI2 protein (2-20AA) |
| Isotype: | IgG |
| Cross-Reactivity: | Human |
| Purification: | Antigen Affinity Purified |

Target Details

| | |
|-------------------|--|
| Target: | GLI2 |
| Alternative Name: | GLI2 (GLI2 Products) |
| Background: | Background: Functions as transcription regulator in the hedgehog (Hh) pathway (PubMed:18455992). Functions as transcriptional activator (PubMed:9557682, |

Target Details

PubMed:19878745, PubMed:24311597). May also function as transcriptional repressor (By similarity). Requires STK36 for full transcriptional activator activity. Required for normal embryonic development (PubMed:15994174, PubMed:20685856).

Aliases: CJS antibody, Gli 2 antibody, GLI family zinc finger 2 antibody, GLI Kruppel family member GLI2 antibody, GLI2 antibody, GLI2_HUMAN antibody, Glioma associated oncogene family zinc finger antibody, HPE9 antibody, Oncogene GLI2 antibody, PHS2 antibody, Tax helper protein 1 antibody, Tax helper protein 2 antibody, Tax helper protein antibody, Tax responsive element 2 holding protein antibody, Tax responsive element 25 bp sequence binding protein antibody, THP antibody, THP1 antibody, THP2 antibody, Zinc finger protein GLI2 antibody

UniProt: [P10070](#)

Pathways: [Hedgehog Signaling](#), [Dopaminergic Neurogenesis](#)

Application Details

Application Notes: Recommended dilution: WB:1:500-1:2000, IHC:1:20-1:200,

Restrictions: For Research Use only

Handling

Format: Liquid

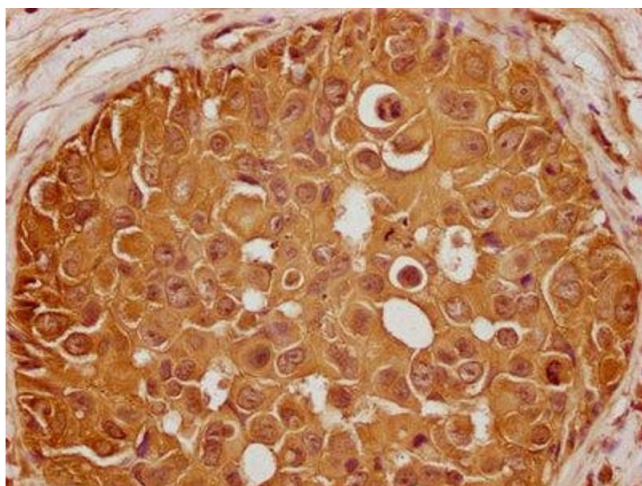
Buffer: Preservative: 0.03 % Proclin 300
Constituents: 50 % Glycerol, 0.01M PBS, pH 7.4

Preservative: ProClin

Precaution of Use: This product contains ProClin: a POISONOUS AND HAZARDOUS SUBSTANCE which should be handled by trained staff only.

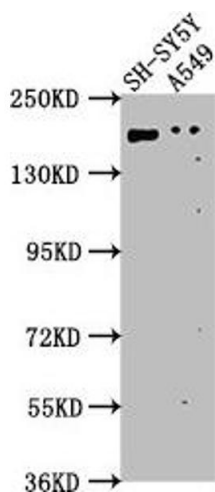
Storage: -20 °C,-80 °C

Storage Comment: Upon receipt, store at -20°C or -80°C. Avoid repeated freeze.



Immunohistochemistry

Image 1. IHC image of ABIN7140243 diluted at 1:100 and staining in paraffin-embedded human breast cancer performed on a Leica Bond™ system. After dewaxing and hydration, antigen retrieval was mediated by high pressure in a citrate buffer (pH 6.0). Section was blocked with 10 % normal goat serum 30 min at RT. Then primary antibody (1 % BSA) was incubated at 4 °C overnight. The primary is detected by a biotinylated secondary antibody and visualized using an HRP conjugated SP system.



Western Blotting

Image 2. Western Blot Positive WB detected in: SH-SY5Y whole cell lysate, A549 whole cell lysate All lanes: GLI2 antibody at 1:1000 Secondary Goat polyclonal to rabbit IgG at 1/50000 dilution Predicted band size: 168, 134, 132, 89, 87 kDa Observed band size: 168 kDa