

Datasheet for ABIN7140255
anti-LBP antibody (AA 250-264)[Go to Product page](#)

1 Image

Overview

Quantity:	100 µL
Target:	LBP
Binding Specificity:	AA 250-264
Reactivity:	Rat
Host:	Rabbit
Clonality:	Polyclonal
Conjugate:	This LBP antibody is un-conjugated
Application:	Immunohistochemistry (IHC), ELISA

Product Details

Immunogen:	Peptide sequence from Rat Lipopolysaccharide-binding protein (250-264AA)
Isotype:	IgG
Cross-Reactivity:	Rat
Purification:	>95%, Protein G purified

Target Details

Target:	LBP
Alternative Name:	Lbp (LBP Products)
Background:	Background: Plays a role in the innate immune response. Binds to the lipid A moiety of bacterial lipopolysaccharides (LPS), a glycolipid present in the outer membrane of all Gram-negative

Target Details

bacteria. Acts as an affinity enhancer for CD14, facilitating its association with LPS. Promotes the release of cytokines in response to bacterial lipopolysaccharide.

Aliases: LbpLipopolysaccharide-binding protein antibody, LBP antibody

UniProt: [Q63313](#)

Pathways: [TLR Signaling](#), [Activation of Innate immune Response](#), [Cellular Response to Molecule of Bacterial Origin](#), [Positive Regulation of Immune Effector Process](#), [Toll-Like Receptors Cascades](#), [Monocarboxylic Acid Catabolic Process](#)

Application Details

Application Notes: Recommended dilution: IHC:1:200-1:500,

Restrictions: For Research Use only

Handling

Format: Liquid

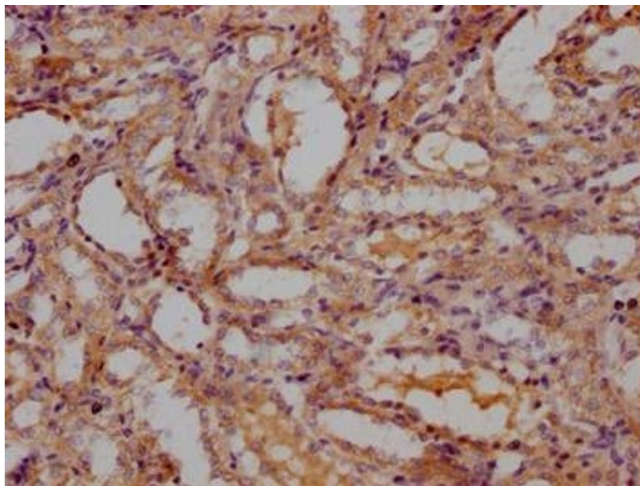
Buffer: Preservative: 0.03 % Proclin 300
Constituents: 50 % Glycerol, 0.01M PBS, PH 7.4

Preservative: ProClin

Precaution of Use: This product contains ProClin: a POISONOUS AND HAZARDOUS SUBSTANCE which should be handled by trained staff only.

Storage: -20 °C,-80 °C

Storage Comment: Upon receipt, store at -20°C or -80°C. Avoid repeated freeze.



Immunohistochemistry

Image 1. IHC image of ABIN7140255 diluted at 1:300 and staining in paraffin-embedded Rat kidney tissue performed on a Leica BondTM system. After dewaxing and hydration, antigen retrieval was mediated by high pressure in a citrate buffer (pH 6.0). Section was blocked with 10 % normal goat serum 30 min at RT. Then primary antibody (1 % BSA) was incubated at 4 °C overnight. The primary is detected by a Goat anti-rabbit polymer IgG labeled by HRP and visualized using 0.05 % DAB.