

Datasheet for ABIN714026

anti-Cyclin A1 antibody (AA 211-310)

2 Images

4 Publications

[Go to Product page](#)

Overview

Quantity:	100 µL
Target:	Cyclin A1 (CCNA1)
Binding Specificity:	AA 211-310
Reactivity:	Mouse, Rat, Sheep
Host:	Rabbit
Clonality:	Polyclonal
Conjugate:	This Cyclin A1 antibody is un-conjugated
Application:	Western Blotting (WB), ELISA, Immunohistochemistry (Paraffin-embedded Sections) (IHC (p)), Immunofluorescence (Cultured Cells) (IF (cc)), Immunofluorescence (Paraffin-embedded Sections) (IF (p)), Immunohistochemistry (Frozen Sections) (IHC (fro))

Product Details

Immunogen:	KLH conjugated synthetic peptide derived from human Cyclin A1
Isotype:	IgG
Cross-Reactivity:	Mouse, Rat, Sheep
Predicted Reactivity:	Human,Dog,Cow,Pig,Horse,Rabbit
Purification:	Purified by Protein A.

Target Details

Target:	Cyclin A1 (CCNA1)
---------	-------------------

Target Details

Alternative Name:	Cyclin A1 (CCNA1 Products)
Background:	Synonyms: CT146, Cyclin-A1, CCNA1 Background: May be involved in the control of the cell cycle at the G1/S (start) and G2/M (mitosis) transitions. May primarily function in the control of the germline meiotic cell cycle and additionally in the control of mitotic cell cycle in some somatic cells.
Gene ID:	8900
UniProt:	P78396
Pathways:	Apoptosis , Cell Division Cycle , AMPK Signaling , Mitotic G1-G1/S Phases , DNA Replication , M Phase , Synthesis of DNA

Application Details

Application Notes:	WB 1:300-5000 ELISA 1:500-1000 IHC-P 1:200-400 IHC-F 1:100-500 IF(IHC-P) 1:50-200 IF(IHC-F) 1:50-200 IF(ICC) 1:50-200
Restrictions:	For Research Use only

Handling

Format:	Liquid
Concentration:	1 µg/µL
Buffer:	0.01M TBS(pH 7.4) with 1 % BSA, 0.02 % Proclin300 and 50 % Glycerol.
Preservative:	ProClin
Precaution of Use:	This product contains ProClin: a POISONOUS AND HAZARDOUS SUBSTANCE, which should be handled by trained staff only.
Storage:	4 °C, -20 °C
Storage Comment:	Shipped at 4°C. Store at -20°C for one year. Avoid repeated freeze/thaw cycles.
Expiry Date:	12 months

Publications

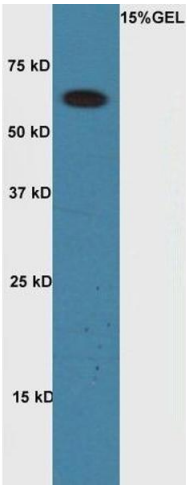
Product cited in: Zhao, Feng, Zhang, Kou, Li, Liu, Zhang, Cui, Chu, Shen, Min: "Inhibition of peripubertal sheep mammary gland development by cysteamine through reducing progesterone and growth factor production." in: **Theriogenology**, Vol. 89, pp. 280-288, (2017) ([PubMed](#)).

Ghate, Das, Chaudhuri, Panja, Mandal: "Sundew plant, a potential source of anti-inflammatory agents, selectively induces G2/M arrest and apoptosis in MCF-7 cells through upregulation of p53 and Bax/Bcl-2 ratio." in: **Cell death discovery**, Vol. 2, pp. 15062, (2016) ([PubMed](#)).

Wang, Wang: "Studying the relationship between cell cycle and Alzheimer's disease by gold nanoparticle probes." in: **Analytical biochemistry**, Vol. 489, pp. 32-7, (2015) ([PubMed](#)).

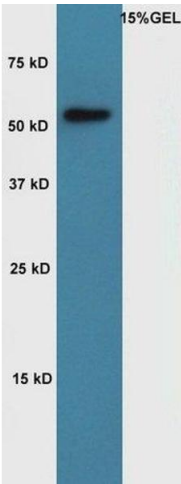
Ghate, Chaudhuri, Sarkar, Sajem, Panja, Rout, Mandal: "An antioxidant extract of tropical lichen, Parmotrema reticulatum, induces cell cycle arrest and apoptosis in breast carcinoma cell line MCF-7." in: **PLoS ONE**, Vol. 8, Issue 12, pp. e82293, (2013) ([PubMed](#)).

Images



Western Blotting

Image 1. Lane 1:A549 cell lysates probed with Rabbit Anti-Cyclin A1 Polyclonal Antibody, Unconjugated (ABIN714026) at 1:300 overnight at 4 °C. Followed by conjugation to secondary antibody at 1:5000 for 90 min at 37 °C.



Western Blotting

Image 2. Lane 1: Mouse muscle lysates probed with Rabbit Anti-Cyclin A1 Polyclonal Antibody, Unconjugated (ABIN714026) at 1:300 overnight at 4 °C. Followed by conjugation to secondary antibody at 1:5000 for 90 min at 37 °C.