



[Go to Product page](#)

Datasheet for ABIN7140282

anti-Acetylated Lysine antibody

2 Images

Overview

Quantity:	100 µg
Target:	Acetylated Lysine
Reactivity:	Please inquire
Host:	Mouse
Clonality:	Monoclonal
Conjugate:	This Acetylated Lysine antibody is un-conjugated
Application:	Western Blotting (WB), ELISA, Immunohistochemistry (IHC)

Product Details

Immunogen:	Purified Protein
Isotype:	IgG
Purification:	Affinity purified

Target Details

Target:	Acetylated Lysine
Alternative Name:	Acetyl Lysine (Acetylated Lysine Products)
Target Type:	Chemical

Application Details

Application Notes:	Recommended dilution:WB:1:500-1:5000,IHC:1:50-1:500,
--------------------	--

Application Details

Restrictions: For Research Use only

Handling

Format: Liquid

Buffer: PBS, pH 7.4, containing 0.02 % sodium azide as Preservative and 50 % Glycerol.

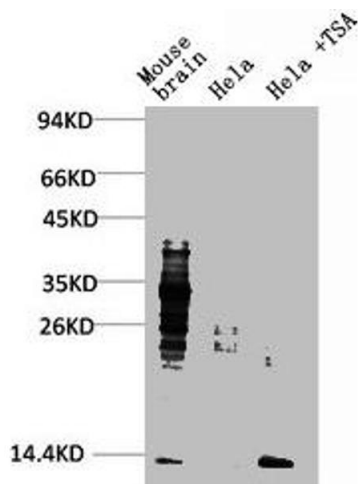
Preservative: Sodium azide

Precaution of Use: This product contains Sodium azide: a POISONOUS AND HAZARDOUS SUBSTANCE which should be handled by trained staff only.

Storage: -20 °C,-80 °C

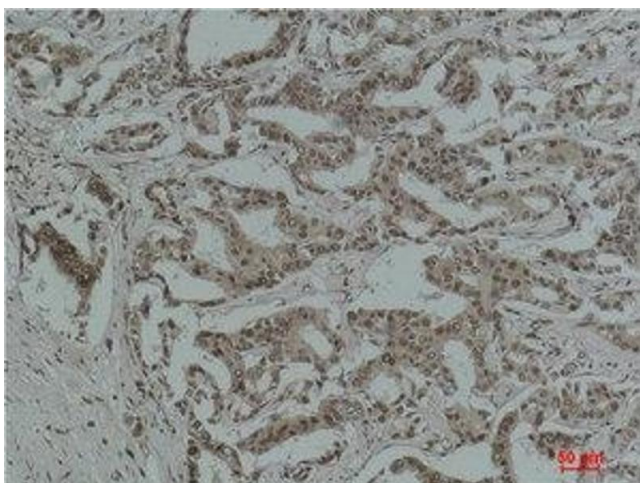
Storage Comment: Upon receipt, store at -20°C or -80°C. Avoid repeated freeze.

Images



Western Blotting

Image 1. Western blot analysis of 1) Mouse Brain Tissue, 2) HeLa, 3) HeLa+TSA Treated using Acetyl Lysine Monoclonal Antibody.



Immunohistochemistry

Image 2. Immunohistochemical analysis of paraffin-embedded Human Breast Carcinoma using Acetyl Lysine Monoclonal Antibody.