

Datasheet for ABIN7140285
anti-Phosphoserine antibody



[Go to Product page](#)

3 Images

Overview

Quantity:	100 µg
Target:	Phosphoserine
Reactivity:	Please inquire
Host:	Mouse
Clonality:	Monoclonal
Conjugate:	This Phosphoserine antibody is un-conjugated
Application:	Western Blotting (WB), ELISA, Immunohistochemistry (IHC)

Product Details

Immunogen:	Purified Protein
Isotype:	IgG
Purification:	Affinity purified

Target Details

Target:	Phosphoserine
Abstract:	Phosphoserine Products
Target Type:	Amino Acid

Application Details

Application Notes:	Recommended dilution:WB:1:500-1:2000,IHC:1:100-1:300,
--------------------	---

Application Details

Restrictions: For Research Use only

Handling

Format: Liquid

Buffer: PBS, pH 7.4, containing 0.02 % sodium azide as Preservative and 50 % Glycerol.

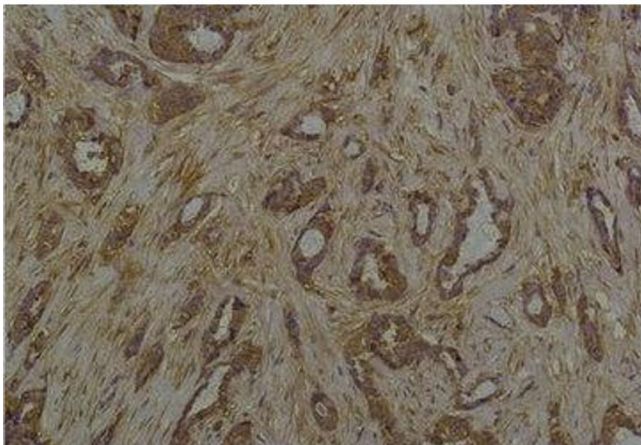
Preservative: Sodium azide

Precaution of Use: This product contains Sodium azide: a POISONOUS AND HAZARDOUS SUBSTANCE which should be handled by trained staff only.

Storage: -20 °C,-80 °C

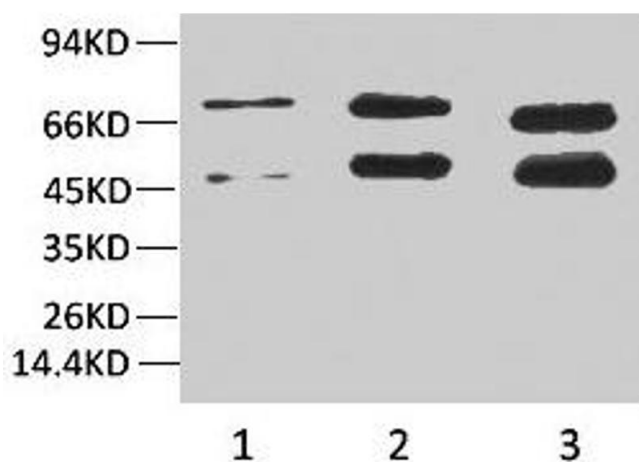
Storage Comment: Upon receipt, store at -20°C or -80°C. Avoid repeated freeze.

Images



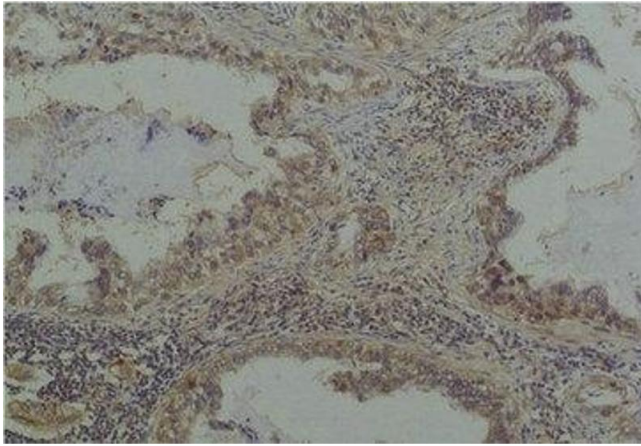
Immunohistochemistry

Image 1. Immunohistochemical analysis of paraffin-embedded Human Breast Carcinoma using Phosphoserine Mouse mAb diluted at 1:200.



Western Blotting

Image 2. Western blot analysis of 1) HeLa, 2) Rat Brain Tissue, 3) Mouse Brain Tissue with Phosphoserine Mouse mAb diluted at 1:2000.



Immunohistochemistry

Image 3. Immunohistochemical analysis of paraffin-embedded Human Lung Carcinoma using Phosphoserine Mouse mAb diluted at 1:200.