

Datasheet for ABIN7140478  
**anti-FEN1 antibody (AA 85-383)**



[Go to Product page](#)

1 Image

## Overview

Quantity:	100 µL
Target:	FEN1
Binding Specificity:	AA 85-383
Reactivity:	Arabidopsis thaliana
Host:	Rabbit
Clonality:	Polyclonal
Conjugate:	This FEN1 antibody is un-conjugated
Application:	Western Blotting (WB), ELISA

## Product Details

Immunogen:	Recombinant Arabidopsis thaliana Flap endonuclease 1 protein (85-383AA)
Isotype:	IgG
Cross-Reactivity:	Arabidopsis thaliana
Purification:	>95%, Protein G purified

## Target Details

Target:	FEN1
Alternative Name:	FEN1 ( <a href="#">FEN1 Products</a> )
Background:	Background: Structure-specific nuclease with 5\'-flap endonuclease and 5\'-3\' exonuclease activities involved in DNA replication and repair. During DNA replication, cleaves the 5\'-

## Target Details

overhanging flap structure that is generated by displacement synthesis when DNA polymerase encounters the 5'-end of a downstream Okazaki fragment. It enters the flap from the 5'-end and then tracks to cleave the flap base, leaving a nick for ligation. Also involved in the long patch base excision repair (LP-BER) pathway, by cleaving within the apurinicapyrimidinic (AP) site-terminated flap. Acts as a genome stabilization factor that prevents flaps from equilibrating into structures that lead to duplications and deletions. Also possesses 5'-3' exonuclease activity on nicked or gapped double-stranded DNA, and exhibits RNase H activity. Also involved in replication and repair of rDNA and in repairing mitochondrial DNA.

Aliases: FEN1 antibody, At5g26680 antibody, F21E10.3Flap endonuclease 1 antibody, FEN-1 antibody, EC 3.1.-.- antibody, Flap structure-specific endonuclease 1 antibody

UniProt: [O65251](#)

Pathways: [Telomere Maintenance](#), [DNA Damage Repair](#), [DNA Replication](#), [Synthesis of DNA](#)

## Application Details

Application Notes: Recommended dilution: WB:1:1000-1:5000,

Restrictions: For Research Use only

## Handling

Format: Liquid

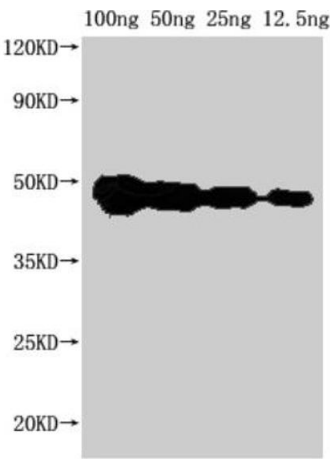
Buffer: Preservative: 0.03 % Proclin 300  
Constituents: 50 % Glycerol, 0.01M PBS, pH 7.4

Preservative: ProClin

Precaution of Use: This product contains ProClin: a POISONOUS AND HAZARDOUS SUBSTANCE which should be handled by trained staff only.

Storage: -20 °C,-80 °C

Storage Comment: Upon receipt, store at -20°C or -80°C. Avoid repeated freeze.



Western Blotting

**Image 1.** Western Blot Positive WB detected in Recombinant protein All lanes: FEN1 antibody at 1:2000 Secondary Goat polyclonal to rabbit IgG at 1/50000 dilution Predicted band size: 37 kDa Observed band size: 45 kDa