



[Go to Product page](#)

Datasheet for ABIN7140514
anti-CRD1 antibody (AA 37-409)

1 Image

Overview

Quantity:	100 µL
Target:	CRD1 (CORD1)
Binding Specificity:	AA 37-409
Reactivity:	Arabidopsis thaliana
Host:	Rabbit
Clonality:	Polyclonal
Conjugate:	This CRD1 antibody is un-conjugated
Application:	ELISA, Western Blotting (WB)

Product Details

Immunogen:	Recombinant Arabidopsis thaliana Magnesium-protoporphyrin IX monomethyl ester [oxidative] cyclase, chloroplastic protein (37-409AA)
Isotype:	IgG
Cross-Reactivity:	Arabidopsis thaliana
Purification:	>95%, Protein G purified

Target Details

Target:	CRD1 (CORD1)
Alternative Name:	CRD1 (CORD1 Products)
Background:	Background: Catalyzes the formation of the isocyclic ring in chlorophyll biosynthesis. Mediates

Target Details

the cyclase reaction, which results in the formation of divinylprotochlorophyllide (Pchlide) characteristic of all chlorophylls from magnesium-protoporphyrin IX 13-monomethyl ester (MgPMME).

Aliases: CRD1 antibody, ACSF antibody, AT103 antibody, CHL27 antibody, ZIP antibody, At3g56940 antibody, F24I3.20Magnesium-protoporphyrin IX monomethyl ester [oxidative] cyclase antibody, chloroplastic antibody, Mg-protoporphyrin IX monomethyl ester oxidative cyclase antibody, EC 1.14.13.81 antibody, Copper response defect 1 protein antibody, Dicarboxylate diiron protein antibody, AtZIP antibody, MPE-cyclase antibody

UniProt: [Q9M591](#)

Application Details

Application Notes: Recommended dilution: WB:1:500-1:2000,

Restrictions: For Research Use only

Handling

Format: Liquid

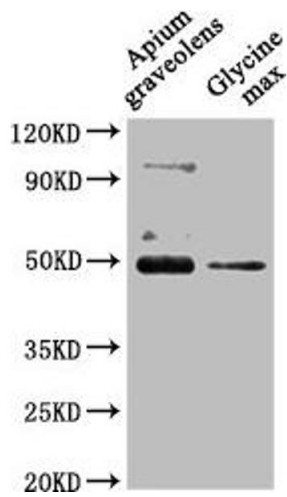
Buffer: Preservative: 0.03 % Proclin 300
Constituents: 50 % Glycerol, 0.01M PBS, pH 7.4

Preservative: ProClin

Precaution of Use: This product contains ProClin: a POISONOUS AND HAZARDOUS SUBSTANCE which should be handled by trained staff only.

Storage: -20 °C,-80 °C

Storage Comment: Upon receipt, store at -20°C or -80°C. Avoid repeated freeze.



Western Blotting

Image 1. Western Blot Positive WB detected in: Apium graveolens leaf tissue, Glycine max leaf tissue All lanes: CRD1 antibody at 1:1000 Secondary Goat polyclonal to rabbit IgG at 1/50000 dilution Predicted band size: 48 kDa Observed band size: 48 kDa